

Weekly Broiler Report

Broiler Placements in Pa. Increase
 Placement of broiler chicks in the State by hatcherymen during the week ending November 14, totaled 980,000, according to the Pennsylvania Crop Reporting Service. This was an increase of 41 per cent from the previous week and an increase of 26 per cent from a year ago. The 10-week total was 4 per cent above the comparable period a year ago. Settings for broiler chicks, totaling 1,271,000 eggs, were 12 per cent above the previous week and 4 per cent below a year earlier. The 3-week total was 4 per cent below last year. Inshipments of broiler-type chicks the past 10 weeks totaled 402,000 or 52 per cent below the comparable period in 1963. Outshipments of 1,433,000 were down 8 per cent.

Placements in the 22 major producing states, totaling 38,171,000 chicks, were about the same as the previous week but 3 per cent above a year ago. The 10-week total was 4 per cent above last year. Settings of 52,747,000 eggs increased 4 per cent from the previous week but were about the same as a year ago. The 3-week total was 1 cent below a year ago.

Eastern Pa. & N.J.
 Offerings of light type hens continued ample Demand good though occasional plants dressing other classes of poultry such as turkeys, capons & roasters. Some lots of heavy type hens sold at 14½-15¢. Occasional lot of capons prices at 32¢ in N.J. section on a net return basis, also 5-6# hens in N.J. moved at 8¢. Prices paid at farm: light type hens 6-6½.

HENS, light type, 5½-8, mostly 6-7; HENS, heavy type, 7-17, m 8-12; PULLETS, 12½-24, m 18-21; ROASTERS 9½-27½, m 19-25; CAPONS, 29-40, m 36-39; DUCKS, 10-31; DRAKES 26-43, m 36-40; GEESE, 22½-38, m 34-36; TURKEYS, toms, 19-31½, m 22-24; TURKEYS, hens, 27-38, m 28-35; RABBITS 21-32, m 26-30; GUINEAS, 45; PIGEONS (per pair) 60-107½, m 65-75; JUMBO SQUAB, 75; Total coops sold: 1794.

Buyer of Oak, WALNUT, Poplar, ASH, etc.
G. J. CHARLES LUMBER
 New Providence, Pa.
 Phone ST 2-3108

Delmarva

Live broiler and fryer prices remain steady. Demand fair but limited for very light auction offerings. Extension of pick-up dates provided occasional added interest.

Ready-to-cook demand light, and very competitive with other production areas.

Filling school contracts in instances active. Estimated slaughter for Friday and Saturday, 496,000 head compared with 840,000 head last week-end.

Prices paid and reported purchases for the 24-hour period ending 10 30 a.m. Friday 14-2-15 2, 733,500 head, including 287,000 head offered and sold at Eastern Poultry Producers Exchange Thursday.

Thirty per cent of the birds sold for 14.5-14.9.

The Delmarva Broiler-Feed Ratio for the week ending 11/13/64 was 32, up one point from the preceding week. The average mash price was \$100.83 and the average broiler-fryer price was 16.00 cents per pound.

Outstanding Holstein Herds In The County

Three counties recently completed outstanding herd records according to the Hol-

Weekly New York Egg Mkt.

From Monday, November 16th to Friday, November 20th

	Mon.	Tues.	Wed.	Thur.	Fri.
WHITE					
Ex. Fcy. Hywts.	40	40	40	38½	37-38
Fcy. Hywts.	36½	36	35½	35½	33½
Fcy Med	30	29 30	29 30	28½	26
No 1 Med.	29	29	29	26½	25½
Pullets	25½	25½	25½	24	22½
Peewees	21	21	21	20	19
BROWN					
Ex Fcy. Hywts.	40½	40½	39½	38	36½-37
Fcy. Hywts.	38½	38	37	36	35
Fcy. Med.	31	31	30	30	29
Pullets	28	28	28	24-25	23½
Peewees	20	20	20	20	19
MIXED					
Fcy. Hywts.	36½	36	35½	35½	33
No. 1 Med.	0	28	28	26	25½
Standards	34-34½	34	32	32	31
Checks	27	27	27	28½	26

TREND: Buyers off the market almost completely. Conditions very unsettled with surpluses available in nearly every category.

Copyrighted 1964 By Urner-Barry Co.

stein - Friesian Association. New Holland

These were:
 Donald L. Hershey, Manheim, with 39 completed production records averaging 13,885 lbs. of milk and 517 lbs. of butterfat.
 H. E. & Maybelle Kettering, Lutz, 51 completed production records averaging 15,683 lbs. of milk and 614 lbs. of butterfat.

On November 16, 130 calves were received. Choice and prime sold for 34-38; good and low choice, 26-33 50; standard, 20-26; and common, 12-20. The trend was steady.

Melvin G. Peifer, Lancaster, 13 completed production records averaging 13,669 lbs. of milk and 520 lbs. of butterfat. A cold is both positive and negative. Sometimes the eyes have it and sometimes the nose.

BRE-BITS... AVAILABLE ONLY FROM AGWAY

BRE-BITS

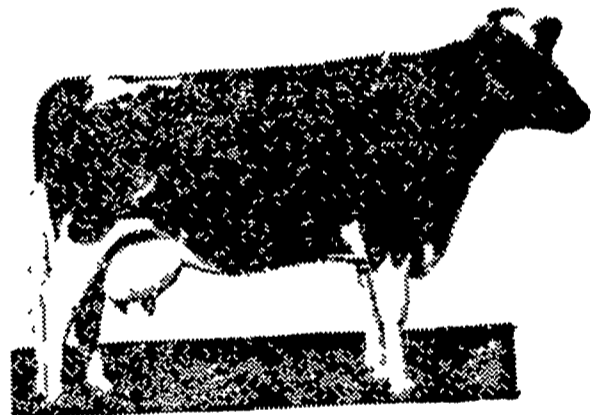
The Life Insurance for the chicks you buy from breeders

Bre-Bits... fed by major breeders in the Northeast

The lifeline that transfers nourishment from the breeder hen to the egg and then on to the baby chick is BRE-BITS! Highly fortified, specially formulated, constantly up-dated — that's BRE-BITS. The result of exhaustive, cumulative total research and offered as the greatest value for the highly important feed dollar — that, too, is BRE-BITS Plus... Feed Additive Extras to meet the specific requirements of the breeder hen and the baby chick. Result: greatest all 'round earnings per bird in hatching eggs and healthy, husky chicks with top sales appeal. For highest quality — highest profits — Buy BRE-BITS from...

Agway Inc., Syracuse, N. Y.

Created by the united farmer members of Eastern States Farmers' Exchange and Cooperative GLF Exchange



WIRTHMORE

Milk Parlor 16

The latest in dairy feeds for modern dairymen

- Handles like a pellet — looks like a dairy feed.
- Coarse textured — flake corn, crimped oats pellets
- High in energy — 76 therms



Clem E. Hooper
 Intercourse
 768-3431

Paradise Supply
 Paradise
 687-6202

J. K. Stauffer & Son
 Lawn and Bellaire
 665-8121 — 367-2321