

MANHEIM BOY WINS CALF IN SCRAMBLE

In the Saturday afternoon calf scramble at the Pennsylvania Livestock Exposition, Ronald Long, Manheim R4, won himself a Shorthorn calf. The calf was donated by the Pennsylvania Shorthorn Breeders Association, and came from

GREENHAND & CHAPTER FARMER DEGREE AWARDS

By Jerry Stehman, Reporter
The Chapter Farmer Degree, the highest award that can be conferred by a local chapter, the Kimberlee Valley Stock Farms, Evans City, Pa. Ronald is the son of Mr. and Mrs. Silas Long.

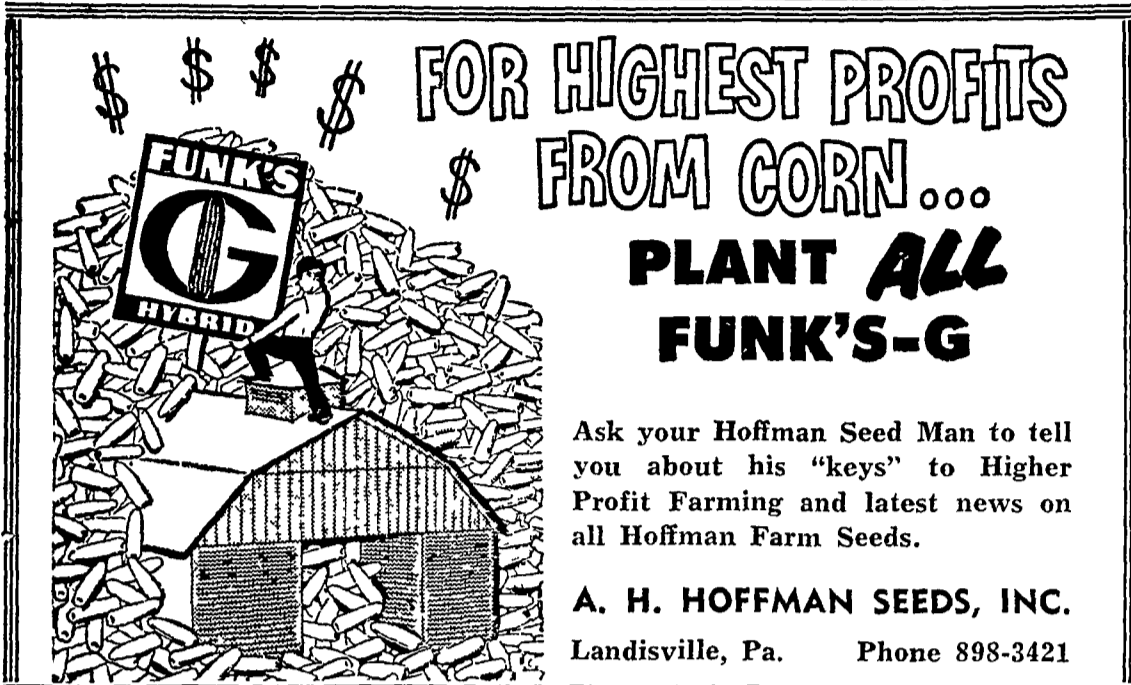
was recently conferred by the Manheim Central Chapter upon the following FFA members: Jay Fisher, William Gibble, Stanley Habecker, Merle McGallicher, Ben Nolt, Wilbur Weaver, James Scheaffer, Ray Scheaffer, Marlin Shearer, Carl Siegrist, Harold Wenger, and Jeffrey Young.

The chapter also conferred

Lancaster Farming, Saturday, November 21, 1964—13

the Greenhand Degree upon Ulrich, Dale Wolgemuth, Richard Gruber, Nelson Hoffer, Norman Burkholder, Gerald Erb, Donald Metzler, Barry Miller, Mahlon Geib, Larry Groff, Larry Martin, Preston Newcomer, Melvin Sauder, Robert

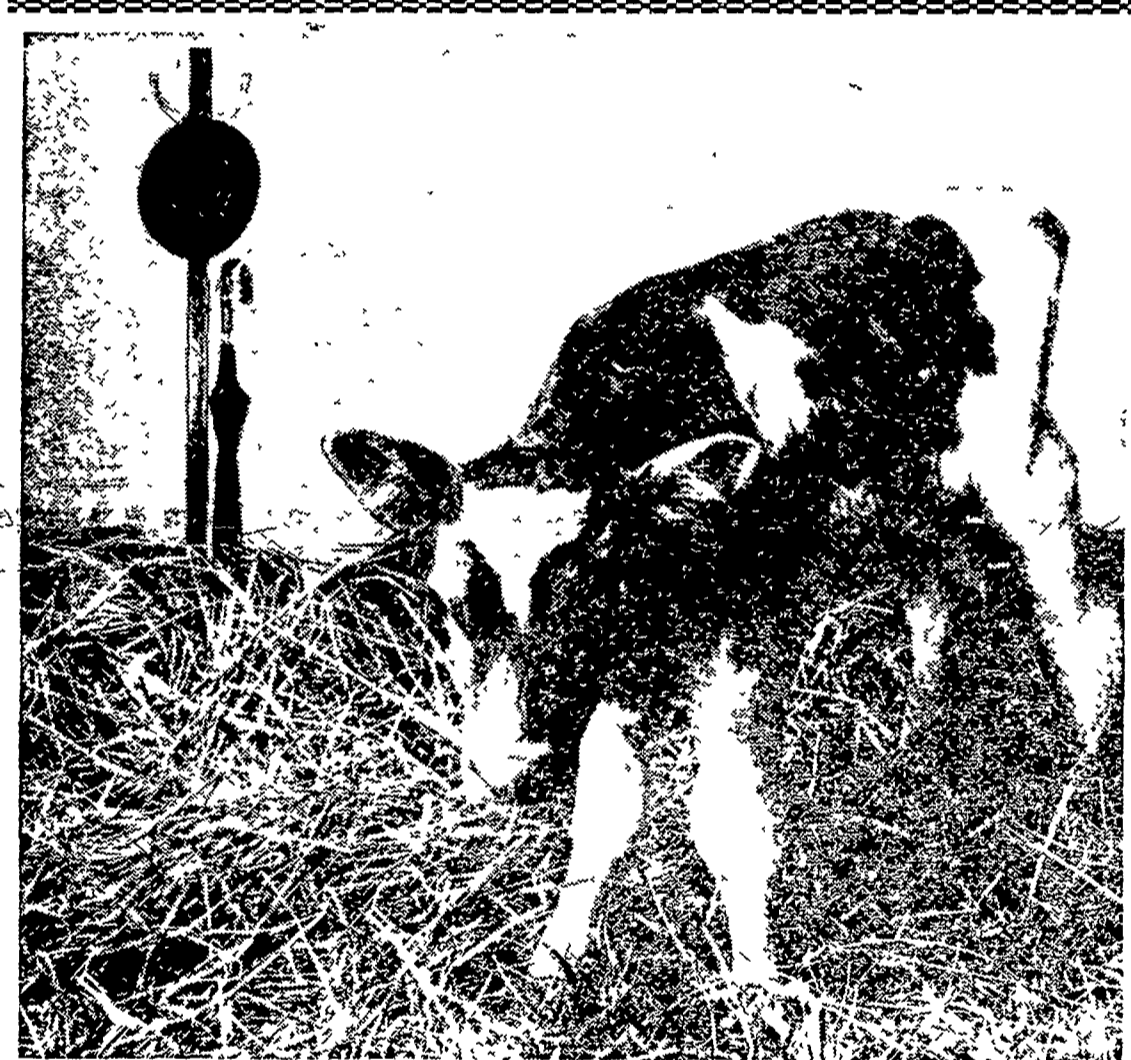
Ulrich, Dale Wolgemuth, Richard Gruber, Nelson Hoffer, Norman Burkholder, Gerald Erb, Donald Metzler, Barry Miller, Mahlon Geib, Larry Groff, Larry Martin, Preston Newcomer, Melvin Sauder, Robert



FOR HIGHEST PROFITS FROM CORN... PLANT ALL FUNK'S-G

Ask your Hoffman Seed Man to tell you about his "keys" to Higher Profit Farming and latest news on all Hoffman Farm Seeds.

A. H. HOFFMAN SEEDS, INC.
Landisville, Pa. Phone 898-3421



She'll Be A Banker When She Grows Up

Most calves simply grow up to be cows. Some grow up to be a sure source of steady, extra income as well. It all depends upon how you feed them. The Pioneer Feeding Program can make the profitable difference. The capacity to handle maximum feed and produce more milk is determined early in your cows' lives, during the calf and heifer stage. Thus, a fruitful feeding program must be designed to meet all the nutritional requirements of growing cattle and to insure efficient production when they join the milking herd.

Dairymen who employ the Pioneer Feeding Program find that it is not only reasonable in cost, but sets the stage for realizing the full production potential of the cow. Tomorrow's milking herd is in your calf barn right now, and today is the best time to establish a feeding program that will mean to help you set one up, as we have helped more milk per cow per year. We would like many of your friends and neighbors in this community. Call us or stop in. Your calves, too, can be bankers when they grow up.



... feeds you can bank on

Joseph M. Good & Son
Leola

Good's Feed Mill
New Providence



WHEN YOU GET TO THE TOP DO IT faster, easier, and for less money with STAUFFER HERCULES Roof Trusses

Putting up a barn? Equipment shed? Poultry house? When you get to the top save money, time effort and materials yet add strength and extra room with Stauffer Hercules engineered wooden roof trusses. We transport them to your farm building site, set them in place with our hydraulic loader speedily and with a minimum of human effort. Self supporting Stauffer Hercules roof trusses need no bearing partitions permit extra floor space for greater storage. Before you top that next new farm building think economy... think quality. Think Stauffer Hercules engineered roof trusses. For details, call

H. M. Stauffer & SONS, INC.
LEOLA Phone 656-2811

FARM BUREAU BE WISE!

BUY FARM BUREAU FERTILIZER (Premium Grades Only)

TAKE DELIVERY NOW! PAY LATER

Early Delivery Discounts
In Effect Now Until March 10, '65
(Discounts \$1.50 to \$4.25 per ton)

CASH DISCOUNTS
Now Until July 31st, '65
Up To 4 1/2%

PLUS VOLUME DISCOUNTS

Accumulative Buying Program
Guaranteed Free Flowing
Pulverized or Granular

Fer-Til Blend® Spreading Service

"2" Fer-til Blend Units Provide Fast, Efficient Service. We do the work — you save time, labor and money.

Fertilize exactly according to soil test analysis.

LANCASTER 394-0541
NEW HOLLAND 354-2146
QUARRYVILLE 786-2126

"Anyone May Buy From Farm Bureau"