

Weekly Broiler Report

Placements In Commonwealth Decrease

Placement of broiler chicks in the State by hatcherymen during the week ending November 7, totaled 694,000, according to the Pennsylvania Crop Reporting Service. This was a decrease of 11 percent from the previous week and an increase of 4 percent from a year ago. The 10-week total was 2 percent above the comparable period a year ago. Settings for broiler chicks, totaling 1,130,000 eggs, were 6 percent below both the previous week and a year earlier. The 3-week total was 9 percent above last year. Inshipments of broiler-type chicks the past 10 weeks totaled 459,000 or 41 percent below the comparable period in 1963. Outshipments of 1,443,000 were down 7 percent.

Placements in the 22 major producing States, totaling 38,164,000 chicks, increased 2 percent from the previous week and 4 percent from a year ago. The 10-week total was 4

percent above last year. Settings of 50,733,000 eggs were about the same as a week earlier and 2 percent below a year ago. The 3-week total was 1 percent below a year ago.

Foglesville
(Prices for dock weights, cents per lb except where noted)

HENS, light type, 6-9, mostly 6-7, HENS, heavy type, 6½-14½, mostly 7-12, PULLETS, 15-25, mostly 20-22, ROASTERS, 11-31, mostly 22-28, CAPONS, 33½-34, DUCKS, 10-30½, mostly 24-29½; DRAKES, 25½-42, mostly 37-40, GEESE, 31½-35, TURKEYS, toms, 11-24, 17-21½, TURKEYS, hens, 26-36½, mostly 27-29; RABBITS, 18½-35, mostly 22-31; GUINEAS, 32½-53, mostly 45-52½; PIGEONS (per pair), 60-95; Total Coops Sold: 1581.

Delmarva

Delmarva

Live broiler and fryer prices advanced more than ½ cent, and demand was good for light auction offerings. Delivered prices mostly ¼-½ cent higher.

Estimate slaughter for Friday and Saturday, 840,000 head, compared with 831,000 head last weekend.

Prices paid and reported purchases for the 24-hour period ending 10:30 Friday: broilers and fryers, 15 2-17 0; 910,600 head, including 383,300 head offered and sold at Eastern Poultry Growers Exchange Thursday.

Twenty-six percent of the broilers sold at 16.0-16.4 cents per pound.

The Delmarva Broiler-Feed Ratio for the week ending 11/6/64 was 3.1. This was up one point from the preceding week. Mash price averaged \$100.97 per ton, and broilers averaged 15.54 cents per pound.

11 00-12 00.

SHEEP: 450. Compared with 365 last week. Fairly Active, Wooled Slaughter lambs and slaughter ewes steady.

WOOLED SLAUGHTER LAMBS: Choice 85-95 lbs. 21.00-22.00, Few to 22.50, Good 18 50-21.00, Utility 16.00-18.50. **SLAUGHTER EWES:** Cull to Choice 4.00-7.00.

PATZ

Sales & Service

Barn Cleaners - Silo
Unloaders - Cattle Feeder

Robert K. Rohrer

Quarryville, R. D. 1
Hensel KI 8-2559

Lancaster Farming, Saturday

Weekly New York Egg Mktc.

From Monday, November 9th to Friday, November 13th

	Mon.	Tues.	Wed.	Thur.	Fri.
WHITE					
Ex. Fcy Hywts	37	38		39	39
Fcy. Hywts.	36	36		36-36½	36½-37
Fcy. Med.	27	28		30	30½
No 1 Med.	25½	27		28	29
Pullets	25½	25½		27	25½
Peeweets	20	20		20-21	21
BROWN					
Ex. Fcy. Hywts.	38-39	39		39	40½
Fcy. Hywts.	38	38		38	38-38½
Fcy. Med.	29½	29½		30	32
Pullets	26	27		27½	28
Peeweets	18	18		18-20	20
MIXED					
Fcy. Hywts.	36	36		36-36½	36½-37
No. 1 Med.	25½	27		0	0
Pullets	25	0		0	0
Standards	34	34		34	34-34½
Checks	27	27		27	27

TREND: Top white generally well-cleared, but medium still irregularly supplied.

Copyrighted 1964 By Urner-Barry Co.

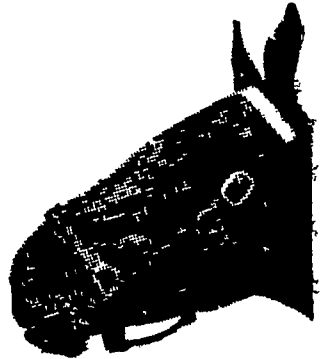
Now Is The Time To Order



Ivan M. Martin, Inc.
BLUE BALL, PA.

Terre Hill 445-3455
New Holland 354-2112
Gap Hickory 2-4148

Wirthmore Horse Feed



Now Featuring Flaked Corn

- Increased Palatability
- Available in 50 or 100 lb. bags
- Coarse Textured

WIRTHMORE

Clem E. Hooper
Intercourse
768-3431

Paradise Supply

J. K. Stauffer & Son

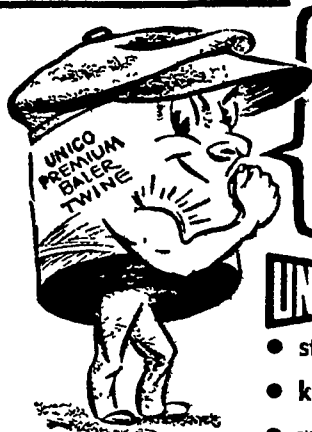
Paradise
687-6292

Lawn and Bellaire
665-3121 — 367-2921

FARM BUREAU'S PRE-SEASON DISCOUNTS ON "QUALITY" TWINE



FARM BUREAU



"hay there"
TIE-IN WITH A
REAL TIME SAVER

UNICO BALER TWINE

- strong, smooth, uniform
- knotless and free-running
- won't snarl or kink

ORDER EARLY AND SAVE \$



10,000 ft. bale, tensile strength 290 lbs.

9,000 ft. bale, tensile strength 325 lbs.

8,000 ft. bale, tensile strength 290 lbs.

CALL TO-DAY FOR OUR SPECIAL "OFF CAR" PRICES FOR NOVEMBER-DECEMBER DELIVERY

LANCASTER COUNTY FARM BUREAU

LANCASTER
394-0541

NEW HOLLAND
354-2146

QUARRYVILLE
786-2126

"ANY ONE MAY BUY FROM FARM BUREAU"



the MORE They Graze
the MORE It Grows

DEKALB "SUDAX" SX-11

MORE FORAGE

EXCELLENT GRAZING QUALITIES

Here's a "grazer" that's hard to beat. SX-11 has all the features of good sudangrass plus the bred-in ability to produce 35 to 50% more forage. It's a fast grower — tolerates drought and is very edible. If you're grazing cattle, SX-11 should be your MUST.

FAST RECOVERY

HIGH PALATABILITY

ACT LIMITED — ACT NOW — TODAY

P. L. ROHRER & BRO., INC.

STANKI POW

Phone Lanc. 397-3539