

**QUALITY PLUMS**

Color alone is no indication of the ripeness of plums, reminds Harold Neigh, Penn State extension consumer specialist. Some plum varieties are fully ripe when the color is yellow-green; others when the color is red, purplish blue, or black. Good-quality plums are plump, clean, of fresh appearance, full colored for the variety, and soft enough to yield to slight pressure. Softening at the tip is a good indication of maturity. Immature fruit is hard.

● **Larry Weaver**

(Continued from Page 1) Repeated the showing he made at the New Holland Farmers Fair earlier this year. He was also runner-up in the Angus class on that occasion and went on to take the showmanship ribbon.

Of the 54 Angus, 50 Hereford, and 5 Shorthorns entered in the Roundup, 35 animals were picked to represent the county at the Farm Show in January. These animals were taken home and were not eligible for the four-county district show on Wednesday.

There were 17 Angus steers selected for the Harrisburg show. These were owned by: Ken Hess, Larry Weaver, Ed Donough, Steve Alleman, Robert Landis, Larry Brubaker, Linda Ober, Don Snyder, Mike Alleman, Phillip Bixler, Gary Neff, William Frey, Robert Donough, Ed Hess, Linda Welk, Carl Guthridge, and Barry Longenecker.

Fourteen Hereford animals were selected, they were owned by May Lou Landis, Carol Hess, Darlene Neff, Jay Bixler, Florence Bixler, Harry Nissly, Nancy Frey, Jay Haverstick, Mike Longenecker, David Heisey, Mike Hosler, Fred Linton, Larrame Forry, and Dan Miller.

Shorthorn steers owned by Donna Hess, Robert Hosler, John Welk, and Robert Long were also selected to participate in the Farm Show.

The Angus and the Hereford cattle in the Tuesday show were each divided into four classes: lightweight; medium-weight, light-heavyweight; heavyweight. The Shorthorns were grouped into one class.

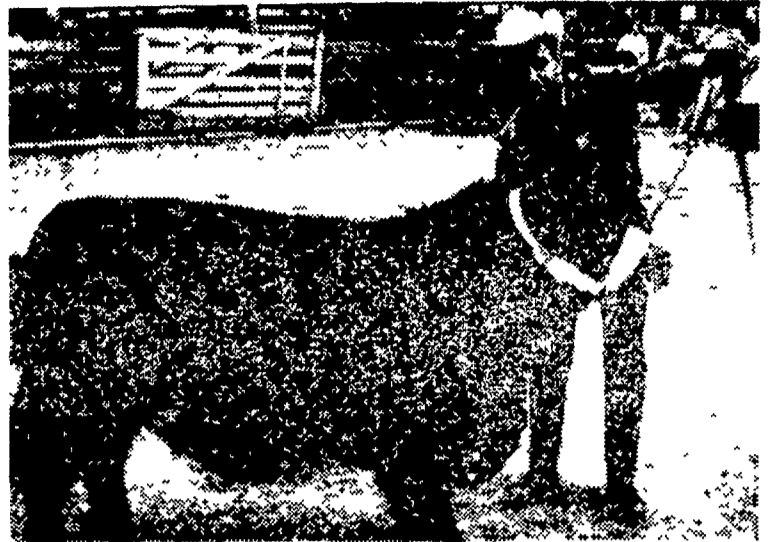
In the Angus breed the top steer of the lightweight class was shown by Ken Hess; mediumweight, Linda Ober; light-heavyweight, Eugene Hosler; heavyweight, Wesley Mast.

In the Hereford group the same categories finished in the following way: Mary Lou Landis; Florence Bixler, Mike Hosler, and Dan Miller.

Donna Hess topped the Shorthorn class.

The judges for this show were Heiman Purdy and Dr Jack Phillips, both from Penn State University.

Twenty-seven nurses who served aboard the hospital ship SS HOPE during its recently-concluded ten-month visit to Ecuador will also be with the ship during its coming mission to Guinea.

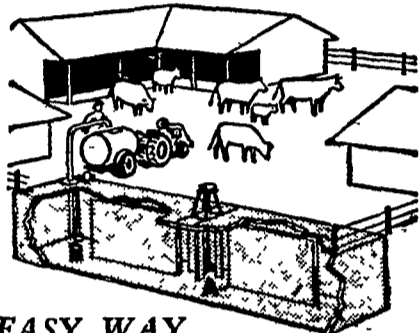


LARRY WEAVER, R. D. 1, NEW HOLLAND, TOP SHOWMAN at the Red Rose 4-H baby beef roundup at the Lancaster Stockyards on Tuesday.

L. F. Photo

**DAIRYMEN-CATTLEMEN**

Here's the answer to your MANURE PROBLEMS



**EASY WAY MANURE DISPOSAL SYSTEM**

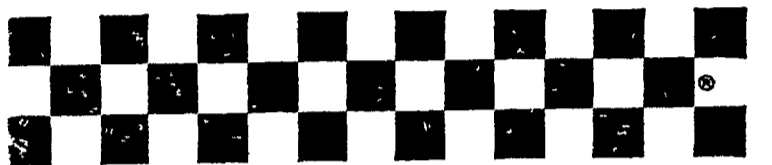
Saves Time—Saves Fertility

Just scrape or wash manure, bedding waste and feed into Easy Way holding tank. When you're ready, the powerful agitator and self-priming chopper impeller pump will put the homogenized mixture into Easy Way liquid field spreader. No clog—no mess—no stink.

For complete information on the EASY WAY DISPOSAL SYSTEM write to:

**CALEB M. WENGER**

R. D. 1, Drumore Center K18-2116, QUARRYVILLE, PA.



**Checkerboard News**



**BREAK-THROUGH IN PULLET GROWING COSTS**

Purina Pullet Developer made with new Least-Cost Performance formulation offers you a real opportunity to save on pullet growing costs this year. In 5 years of testing at the Purina Research Farm, this improved feed formula saved from 1 to 2 1/2 pounds of feed per pullet, making a very satisfactory reduction in pullet growing costs.

**LOW COST PRODUCTION...**  
the reason why more farmers feed **PURINA**

©Registered trademarks—Ralston Purina Co.

John J. Hess, II  
Paradise New Providence

Ira B. Landis  
Valley Road, Lancaster

John B. Kurtz  
Cedar Lane

Wenger's Feed Mill, Inc.  
Rheems

James High  
Gordonville

Whiteside & Weicksel  
Kirkwood

John B. Kurtz  
Ephrata

S. H. Hiestand & Co.  
Salunga



**LOOK! BOOK!**



**Farm Bureau Beef Feeds To-day**

- Farm Bureau's Beef Feeds Tested and Proved
- High Level Vitamin A and Vitamin D
- Available With Or Without Stibestrol
- A Concentrate Available For Every Need

**WHAT A VARIETY OF BEEF FEEDS!**

- |                    |                      |
|--------------------|----------------------|
| 30% Beef Maker SBS | 32% Steer Supp A SBS |
| 50% Pro Blend      | 32% Steer Supp B     |
| 50% Pro Blend SBS  | 32% Steer Supp B SBS |
| 32% Steer Supp A   | 64% Steer Blend      |

ALL BEEF FEEDS AVAILABLE IN BAGS OR BULK

CALL TO-DAY FOR COMPLETE DETAILS

**LANCASTER COUNTY FARM BUREAU**

LANCASTER  
394-0541

NEW HOLLAND  
354-2146

QUARRYVILLE  
786-2126

"ANY ONE MAY BUY FROM FARM BUREAU"