

**● For The Farm Wife**

(Continued from Page 8)

Heat oven to hot (400 degrees). Wash apples and remove the core. Place in baking pan. Fill center of each apple with nut-raisin mixture. Pour maple syrup around apples; bake uncovered about 45 minutes or until tender. Baste apples with the maple syrup several times while baking. Makes 6 servings.

**Highlights Of District Directors Annual Conf.**

Resource planning and related factors in modern living will highlight themes for the 17th Annual Conference of Soil and Water Conservation District Directors, Nov 17-19 at Mount Airy Lodge, Mt Pocono, State Agriculture Leland H. Bull announced recently Secretary Bull, chairman of the State Soil and Water Con-

servation Commission, will address the conference, as will Lieutenant Governor Raymond P. Shafer and other conservation leaders.

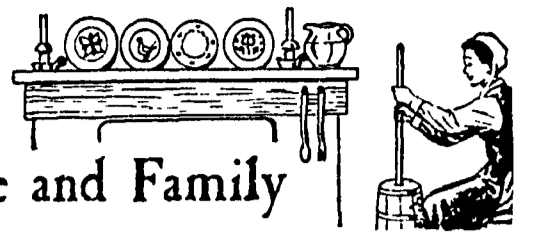
The lieutenant governor will be conference banquet speaker 6:30 Wednesday night, Nov. 18 Jack R Grey, program deputy secretary of agriculture, will speak on "Trends of the Future" at the first general session, Tuesday night, Nov 17. Secretary Bull will preside at the Wednesday morning meeting and speak on "Conservation Needs Your Help for a Place to Live" He will introduce Charles F. Hess, who recently was named director of the State Soil and Water Conservation Commission.

Other speakers will include Dr Russell F. Lison, dean, College of Agriculture, and Dr Dorothy Veon, professor of education, both of the Pennsylvania State University, University Park; Hollis A Hatfield, Camp Hill, secretary-treasurer, Pennsylvania Farmers Association; Ivan McKeeveer, Harrisburg, state conservationist with the U.S. Soil Conservation Service.

Also, Herbert Howlett, Trenton, N J, chief of planning, Delaware River Basin Commission, John R George, Harrisburg, geologist in charge, U S Department of Interior, Geological Survey, David G. Unger, Washington, D C, assistant executive secretary, National Association of Soil and Water Conservation Districts, a former director of the state commission.

Sophie Ludwig, Milford, chairmen of the conference committee, said arrangements are being made to accommodate nearly 300 delegates and guests.

**For the Farm Wife and Family**



**Ladies, Have You Heard? . . .**

By: Doris Thomas, Extension Home Economist

**Some Things To Know About Color And Yourself**

Because colors affect your skin tone, eyes, and hair, be sure colors you choose make you feel right when you wear them.

A color is becoming when it helps your skin look clear and healthy. Also it should bring out the highlights of your hair and make your eyes sparkle. Becoming colors also flatter your figure and bring out your good features.

Colors must be appropriate to the occasion, but today some version of almost any color is suitable.

You can't choose a color without considering your own personal coloring. You're either a warm-toned person with tanned skin, brown eyes, and brown hair, or you're a cool-toned person with pink skin, blue eyes, and blonde hair. All other combinations



THOMAS

**4-H Club News**

Awards were presented to several members of the Jolly Stitches at the first Achievement Night program held at Penn Manor High School.

Receiving awards for Dress Revue were Joyce Hoist, June Ann White, Gail Smith, Jane Smith and Kaye Smith for demonstrations, Joyce Hoist, Jane Smith, Kaye Smith and Cindy Smith; for completing first year projects, Kathy Hoobler, Cindy Smith, Cindy Kilhefner, Cindy McQuate, Faye Weaver, and Mary Lou Sensing.

The club also received second prize for its display.

On October 22, four members attended the Junior Leaders Banquet at the Meadow Hills Dining Room, near Lancaster.

All members received awards for completing their projects.

Project HOPE medical personnel continue to work today in Saigon, South Viet Nam, Trujillo, Peru, Guayaquil and Cuenca, Ecuador — all visited previously by the hospital ship SS HOPE.

tend toward either the warm or the cool. When you wear colors related to your skin tone, you give emphasis to it. If you're a warm-skinned person, you can use earthy, warm colors, or contrasting dark bright colors to bring out the more glowing tones in the warm skin.

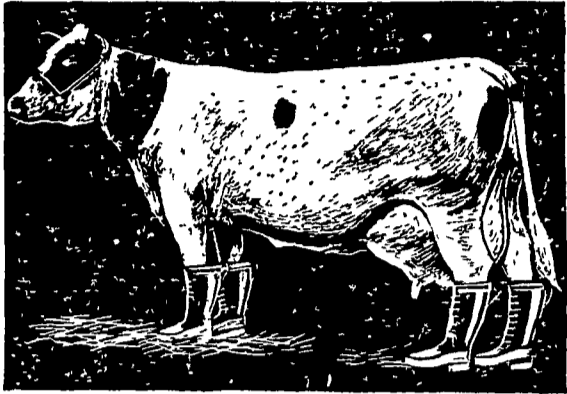
Actually you can wear almost any color if you choose the right lightness or darkness and the correct brightness or dullness. Try a variety of values and intensities near your skin to see what they do for you.

**Solutions To Some Familiar Wood Finish Problems**

Never let a damp cloth lie on a wood surface, whether the cloth is damp with water or any other liquid including furniture polish. The dampness could damage the finish because the moisture will be trapped under the cloth and can't evaporate.

Extremes of temperature and humidity, overexposure to sunlight, or just plain aging of the furniture can cause checking and cracking of a wood finish. An application of paste wax will improve the appearance if checking is not severe.

Sometimes you can hide scratches on dark wood with an applicator of a paste shoe polish in the brown shade.



**A cow with boots . . .**

Farmers know that cattle must have dry feet. MARTIN'S BARN-DRI dries damp and wet floors immediately.

MARTIN'S BARN-DRI also helps prevent costly animal loss by reducing slipping when floors are wet.

Use MARTIN'S BARN-DRI for all animals — cattle, hogs, horses, chickens, pets, others. Scatter by hand or shovel. Buy by the bag or ton.

**Ivan M. Martin, Inc.**

BLUE BALL, PA.

Terre Hill 445-3455

New Holland 354-2112

Gap Hickory 2-4148



**DO YOU WANT MORE CORN PROFIT?**

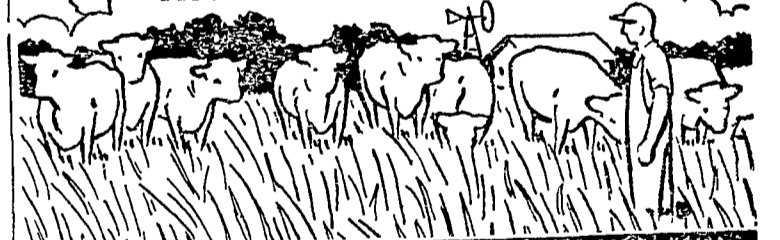
Farm management studies show that overall farm profits are pegged closely to corn yields. The surest and best way to increase your yields and profits is with the Funk's-G Trio of High Profit Practices at right. Put these proven steps to work on your farm — NOW. Use High Capacity Funk's G-Hybrids — and the plan — to help you set a new, higher yield goal — and make it!

- 1 Start with a high capacity FUNK'S G-HYBRID
- 2 PLANT IT THICKER
- 3 APPLY EXTRA FERTILIZER to feed the extra plants

**HIGH PROFIT CORN IS THE KEY TO HIGHER PROFIT FARMING**

**A. H. HOFFMAN SEEDS, INC., LANDISVILLE, PENNA.**  
Serving farmers with finest quality seeds since 1899

**the MORE They Graze the MORE It Grows**



**DEKALB "SUDAX" SX-11**

**MORE FORAGE**

**EXCELLENT GRAZING QUALITIES**

**FAST RECOVERY**

**HIGH PALATABILITY**

**SUPPLIES ARE LIMITED — ACT NOW — TODAY**

**P. L. ROHRER & BRO., INC.**

SMOKETOWN

Phone Lanc. 397-3539