

● **For The Farm Wife**

(Continued from Page 8)
 en brown. Brush lightly with melted butter. Serve piping hot. Makes 2 dozen large muffins.

SUGARED DOUGHNUTS

To recipe for Raised Corn Meal Muffins add:
 2 tablespoons additional sugar

1½ cups additional sifted all-purpose flour

½ teaspoon nutmeg

Stir in above ingredients just before beating in remaining flour. Cover; let rise in warm place until double in size, about 1 hour. Stir dough down. Roll out on lightly

floured board or canvas to ½-inch thickness. Cut with floured 2½ inch doughnut cutter. Place on cooky sheets. Let rise uncovered in warm place until nearly double in size, about 45 minutes. Fry in hot deep fat (375 degrees) about 3 minutes or until golden brown, turning only once. Drain on absorbent paper. While warm shake in paper bag containing a small amount of granulated sugar. Makes 2½ dozen doughnuts.

GLAZED DOUGHNUTS:

Frost warm doughnuts with thin confectioners sugar frosting; sprinkle with chopped nuts. Roll out on lightly nutmeats.

● **ASCS**

(Continued from Page 1)

Type # 41 tobacco.

The survey cards were to have been returned by Friday, October 23. The difference between the total acreage indicated from the cards and the true total acreage in the county will have to be estimated by ASCS. Some farmers have felt in the past that these estimates were not accurate. Any estimate is less accurate than an actual count, but the more farmers that do not return their cards the more acreage must be determined by estimate.

So, even if you have missed the deadline on returning yours to ASCS, get it in the mail today. They'd rather have your exact acreage figures than have you feel they had estimated these inaccurately.

Ladies, Have You Heard? . . .

By: Doris Thomas, Extension Home Economist

Practical Features For Child's Overalls

Small pleats at the bend of the hips give extra seat length for stooping and squatting.

A built-up back and a front bib that buttons to the straps about halfway between waist and shoulder keep straps from slipping.

Legs should be wide enough for easy knee bending but not so wide they will cause the child to trip. Hems are safer than cuffs — you can make hems wide for letting out later.

Straps with several buttonholes to button inside the waist will allow you to lengthen the body of the overall as the child grows.



THOMAS

No Time Limit When

tween-meal snacks.

It Comes to Serving Milk

Milk and milk products fit into the menu regardless of the time of day or night you serve food.

Milk is an ideal beverage at all three meals and for be-

Milk can appear as butter-cakes; as cheese in the sandwiches at lunch, in the dessert for dinner.

(Continued on Page 12)

L. H. BRUBAKER

YOUR LAST CHANCE!

PRICED TO MOVE!

GENERAL ELECTRIC'S
End of Model-Year Event!

They've just got to go! So we've priced 'em to move out fast! You may never get a chance like this again!

BIG, 12-LB. CAPACITY
FILTER-FLO
WASHER
BY G-E!



2 SPEEDS
 2 CYCLES

Big, PROVEN 12-lb. capacity! 2 wash and spin speeds. 2 wash cycles. Spray Rinse. Unbalanced load control. Counter high, counter deep. WA802Y only

\$179.

No Cash Needed on GECC Plan!

2-DOOR
REFRIGERATOR-FREEZER!

NEVER NEEDS
DEFROSTING!

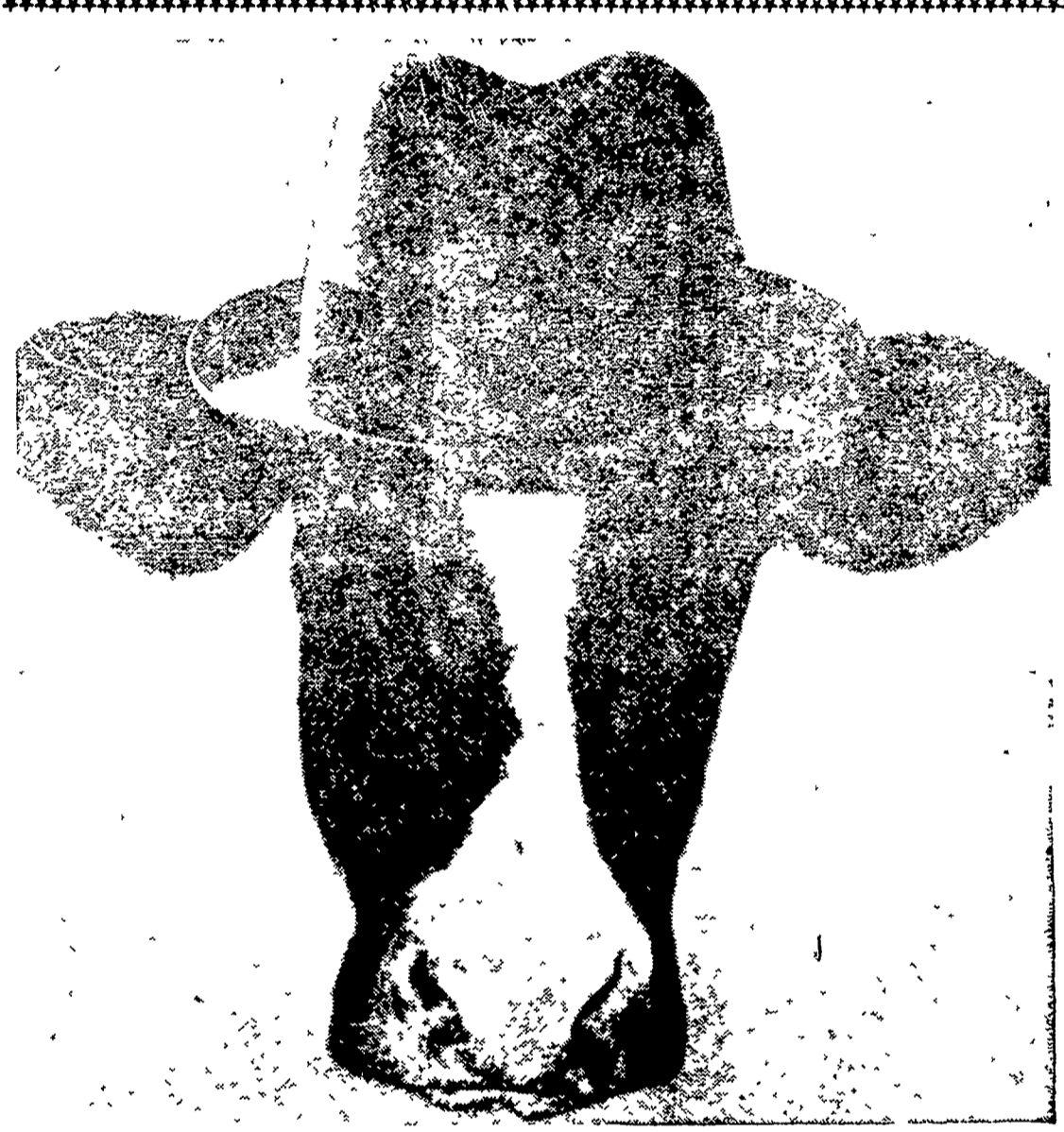


You never defrost refrigerator or big, zero degree freezer. Spacious shelves, including slide-out. Porcelain vegetable bin.

TB403Y

\$258.

L. H. BRUBAKER
 R. D. 3, Lititz
 350 Strasburg Pike, Lancaster
 Phone: Lanc. 397-5179 — Strasburg 687-6002 — Lititz 626-7766



Your Friendly Banker

You probably don't think of your cows as bankers, but if you put them on the Pioneer Feeding Program, they can be a sure source of steady, extra income. The goal of this high-nutrient feeding program is simple — more milk per cow. According to dairy specialists, 9 out of 10 cows don't get enough feed, or the proper kind of feed, to produce up to their genetic capacity. If this is the case with your herd, you may be getting 2,000 pounds of milk less, per cow per year, than you should. The

Pioneer Feeding Program is based on increasing feed allowance as long as milk production increases profitably. For example, as little as 600 pounds of feed invested in a dry cow returns as much as 2,000 pounds of milk. Your milking herd will respond equally well when you challenge them to milk right up to their capacity. We'll be happy to show you how you can milk your cows for all their worth. We've done it for your neighbors in this community. Just give us a call or stop in. We're friendly, too.



. . . feeds you can bank on

Joseph M. Good & Son
 Leola

Good's Feed Mill
 New Providence