

Weekly Broiler Report

Placements in State Lowest in Past Year

Placements of broiler chicks in Pennsylvania by hatcherymen during the week ending October 10 was the lowest weekly placement since November 2 of last year, according to the Pennsylvania Crop Reporting Service. Placements during the week totaled 608,000 chicks, down 19 per cent from the previous week and 14 per cent below the comparable period a year ago. The 10-week total was up 12 per cent from last year. Eggs set for broiler chicks totaled 1,318,000, 39 per cent above a week earlier and 48 per cent above the previous year. The 3-week total was up 16 per cent from last year. In shipments of broiler-type chicks the past 10-weeks totaled 789,000 or 28 per cent above the comparable period a year ago. Outshipments of 1,315,000 were down 8 per cent.

Placements in the 22 major producing states totaled 36,708,000 chicks, 1 per cent below the previous week, but 6 per cent above a year ago. The 10-week total was also 6 per cent above last year. Settings of 50,627,000 eggs were up 5 per cent from both a week and a year earlier. The 3-week total was 3 per cent above a year ago.

Eastern Pa. & N.J.

Supplies of light type hens ample for the light to mostly fair demand. Offerings of 5-6# hens spotty for fair buying interest with plant prices

ranging 10-11¢. Demand fair for barely adequate supplies of heavy type hens. Supplies of heavy type hen turkeys ample. Demand generally unaggressive & no more than fair. Some flocks of hens turkeys moved at 22½-23¢. Prices paid at farm light type hens 5½-6¼ mostly 6-6½¢, heavy type hens 14¼-15¢.

Fogelsville

HENS, light type 6½-9, mostly 7-8; HENS, heavy type 8½-17½, m 10-15; PULLETS 13½-28½, m 24-26; ROASTERS 14½-30, m 24-28; DUCKS 15-28, m 26½-28; DRAKES 19-30, m 34-37; TURKEYS, toms 20-23; TURKEYS, hens 25-27½; RABBITS 20-34, m 25-29; GUINEAS 35-62½, m 47½-62½; PIGEONS (per pair) 45-87½, m 57½-65. Total coops sold: 1241.

Chicago

(Continued from Page 2)

lbs. 26.75 and one load 1426 lbs. 27.00. Bulk High Choice and Prime 1200-1450 lbs. 26.00-26.50, loadlots Mixed Choice and Prime 1050-1200 lbs. 25.75-26.25, several loads 1050-1125 lbs. at 25.50 carried end of Prime. Choice 1100-1450 lbs. 24.75-26.00, load mostly High Choice 1500 lbs. 26.00, couple loads Choice 1513-1590 lbs. 24.50-25.00. Bulk Choice 900-1100 lbs. 24.00-25.00, few loads 1000-1100 lbs. 25.25, Good all weights 21.25-23.50, loadlots Mixed Good and Choice 23.75-24.75, Standard and Low Good 19.00-21.50.

Slaughter heifers: Loadlots Mixed Choice and Prime 875-1050 lbs. 23.75-24.00, load and part load mostly Prime 1000-

Delmarva

The broiler and fryer market, with moderate auction offerings, was slightly lower. Retail movement was moderate due to price resistance in terminal markets.

Retail prices were mostly unchanged.

Estimated slaughter for Friday and Saturday was 864,000 head compared to 747,000 head last weekend.

Prices paid and reported purchases for the 24-hour period ending 10:30 a.m. Friday; broilers and fryers, 16.0-17.2; 1,052,700 head were sold including 543,800 head purchased at Eastern Poultry Growers Exchange on Thursday.

29 percent of the sales were at 16.0-16.4.

Vintage

(Continued from Page 2)

sale to establish a market. WOOLED-SLAUGHTER LAMBS: Few Choice 80-105 lbs. 20.50-23.50, Utility 15.00-18.50.

SLAUGHTER EWES: Utility to Choice 6.00-8.00.

At the Hog sale on October 10, 110 head were sold. Hogs weighing 180-200 lbs. brought 17.10-17.75; 200-220 lbs. 17.35-18.10; 220-240 lbs. 17.00-17.85; 240 lbs. and up, 16.00-17.10. Sows sold for 12.00-14.10.

1100 lbs. 24.25, Bulk Choice 800-1050 lbs. 22.50-23.50, Good 20.50-22.00, Standard and Low Good 18.50-20.50.

Cows: Utility and Commercial closed at 11.50-14.00, Canner and Cutter 9.50-12.25, light-weight Canner 8.00-9.50.

Bulls: Cutter to Commercial 15.50-17.00.

Weekly New York Egg Mkt.

From Monday, October 12th to Friday, October 16th

	Mon.	Tues.	Wed.	Thur.	Fri.
WHITE					
Ex. Fcy. Hywts.	38½-39	38½-39	38½-39	38½-39	38½-39
Fcy. Hywts.	37	37-37½	37½	37½	37½-38
Fcy. Med.	31	31	30	30	30½-31½
No. 1 Med.	30½	30½	30	30	30-30½
Pullets	22	23½	25	25	25
Peewees	17	17-18	18-19	18-19	18-19
BROWN					
Ex. Fcy. Hywts.	42	43	43	43	42
Fcy. Hywts.	40	41	41	41	41
Fcy. Med.	32	32	32	32	32
Pullets	22	23½	25	25	25
Peewees	17	17-18	18-19	18-19	18-19
MIXED					
Fcy. Hywts.	37	37-37½	37½	37½	37½-38
Standards	32½-33	33	33	33	33-33½
Checks	23-23½	23½	24½	24½	24½

TREND: Market extremely irregular with top quality top white not clearing, but fancy heavies bid slightly higher. White mediums recovered from yesterday's decline.

Copyrighted 1964 By Urner-Barry Co.

Lancaster

(Continued from Page 2)

few 230-250 lbs. 16.50, U.S. 2-3 200-250 lbs. 16.50-17.25, 250-270 lbs. 16.00-16.75.

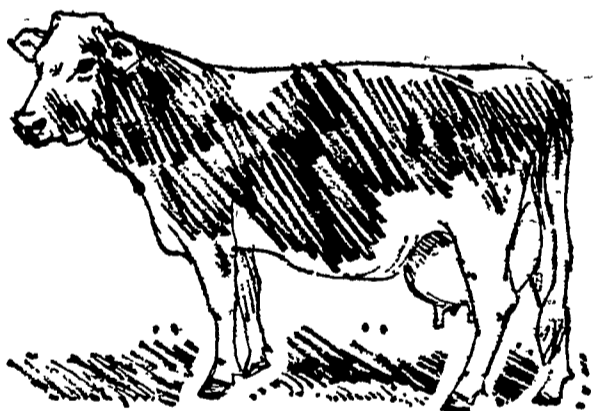
SOWS: U.S. F3 300-500 lbs. 12.00-13.00, U.S. 1-2 280-350 lbs. 13.00-13.50, U.S. 2-3 500-600 lbs. 11.50-12.50.

SHEEP 475. Compared to 275 last week, moderately active, Woolled Slaughter Lambs and Slaughter Ewes steady.

WOOLED SLAUGHTER LAMBS: Choice 75-100 lbs. 22.00-23.50, Good 19.00-22.00.

SLAUGHTER EWES: Cull to Choice 5.00-7.00.

For Dairy Herds On the Way Up:



AGWAY'S
NEW

MILKERPELS

This new line of Agway dairy feeds is designed to raise your production, and your profits.

Agway Milkerpels are high in energy, all pelleted rations specially formulated for herds with big capacities for producing milk. (And remember, most modern dairy cows have little trouble getting up to 15,000 lbs. of energy intake is at a high level).

Agway #1550-14 Milkerpels is a 14% protein feed to be fed with good (or excellent) quality mixed or legume hay.

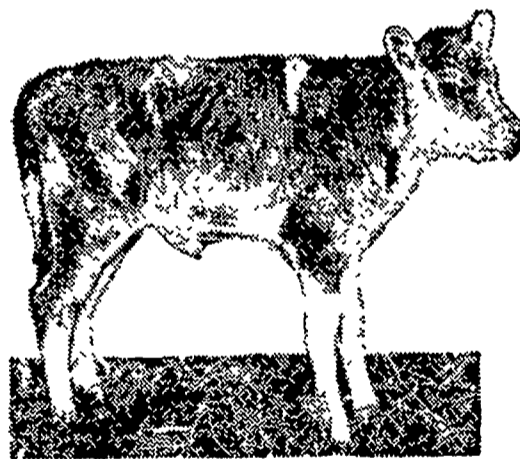
Agway #1600-16 Milkerpels is a 16% protein feed to be fed with fair or good quality mixed hay plus grass or corn silage.

Agway #1500-20 Milkerpels is a 20% protein feed to be fed with high corn silage or straight grass hay rations.

Order Agway Milkerpels today. Start your herd on the way up... with a high energy feeding program... including one of the Agway Milkerpels rations.



Solve Your Ketosis Problems With The New Wirthmore KETROL



- KETROL provides the most economical method of Ketosis prevention.
- KETROL can be fed at the desired level with various types of Dairy concentrate feeds.
- KETROL — the simple most convenient Ketosis treatment.
- KETROL has a high sugar content, is palatable and highly effective in control of Ketosis.



Clem E. Hooper
Intercourse
768-3431

Paradise Supply
Paradise
687-6292

J. K. Stauffer & Son
Lawn and Bellaire
665-3121 — 867-2321