

**● Larry High**  
(Continued from Page 1)

Holland R1: Chester Nolt, Harvey High, and Melvin Groff, all of Bareville.

**Show Results**

**Angus**  
1, Larry High, Bareville, 2, Larry Weaver, New Holland R1, 3, Bonnie Nolt, Bareville; 4, Galen Yoder, Elverson R2, 5, Barbie Nolt, Bareville, 6, Dale Groff, Bareville, 7, William Fisher, East Earl R1, 8, John Campbell, New Holland, 9, Carl Campbell, New Holland

**Hereford**

1, William Fisher, East Earl R1, 2, Karen High, Bareville, 3, James Musser, East Earl R1; 4, Candice Myer, New Holland R1, 5, Sheryl Weaver,

New Holland R1.

**Showmanship**

1, Larry Weaver, New Holland R1, 2, Larry High, Bareville, 3, John Campbell, New Holland.

**Fitting**

1, Galen Yoder, Elverson R2; 2, Bonnie Nolt, Bareville, 3, Candice Myer, New Holland R1

Following the show these animals were sold at auction by the New Holland Sales, Inc. The average price per hundredweight was \$32.76. The Grand Champion was purchased by Elam Burkholder, New Holland food market operator, for 64 cents per pound. The Reserve Champion was bought for 30½ cents per pound by the Whitford Sales Stable, Whitford, Pa.

**● NEPPCO Plans**  
(Continued from Page 1)

the educational sessions will perts on all phases of the industry's new high-density housing. The group will cover the topic from finance and construction engineering to actual production and marketing on the farm level.

New marketing techniques, the extent of integration, local zoning problems, broiler condemnations, started pullet programs and the latest in disease control — these and a number of other key topics will get thorough examination.

Displays of outstanding interest will include the nation's largest market egg show and the Boulevard of Champions, a giant panorama in photos, trophies and charts honoring winners of poultry industry

competitions over the past two decades. Other top display attractions include the random sample test, flock exhibits and another on NEPPCO's member services.

NEPPCOland's Poultry Princess will be crowned following a colorful pageant on Wednesday evening. On the night before, the 14-state area's Best Poultry Farmer will be named at the big annual Youth Banquet along with winners of egg and poultry judging competitions and of contests in poultry cookery, marketing and production demonstrations.

Tickets and complete data are available either at the show or from NEPPCO headquarters at 10 Rutgers Place, Trenton, NJ.

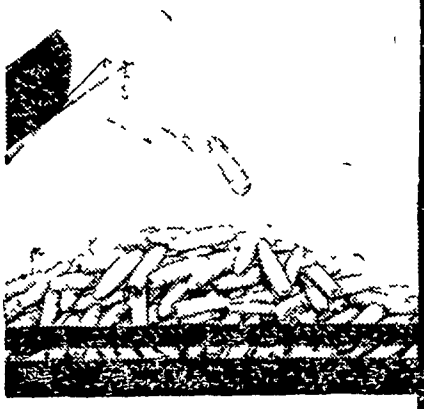
We'll see you at the NEPPCO Show!

**Hershey Made Junior Member Of Holstein Ass'n**

Henry H. Hershey, Lititz, has been granted junior membership in the Holstein Friesian Association of America headquartered at Brattleboro, Vermont.

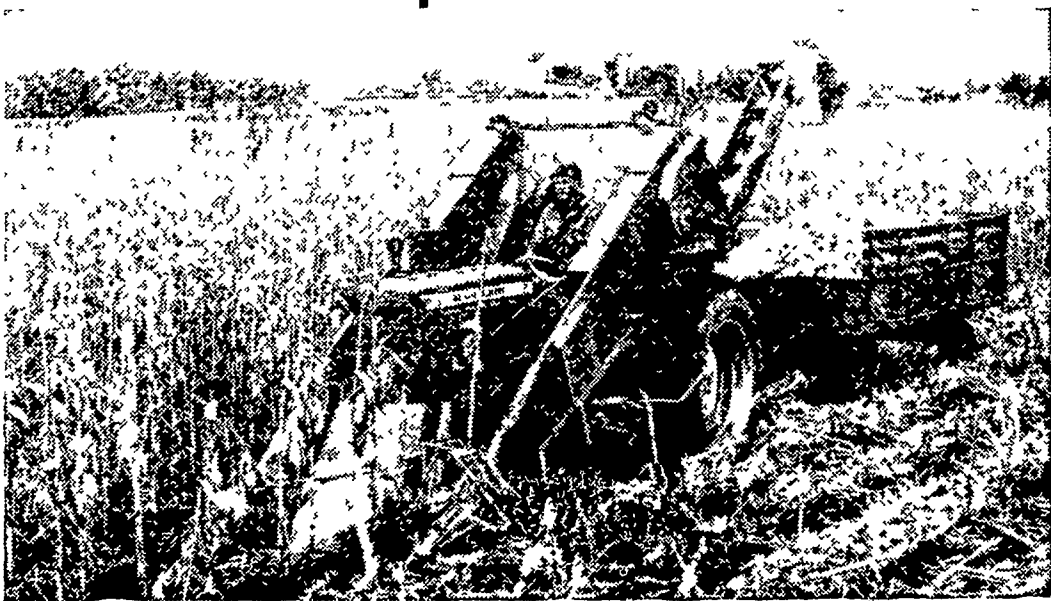
To qualify, member candidates must be under 21 and have successfully completed one year's work in a 4-H or vocational agriculture duty project. Individual ownership of at least one Registered Holstein is also required.

Junior members are entitled to all privileges, except voting of the national Holstein organization. They may register and transfer their animals at member rates and receive regular reports of breed and Association progress.



**the  
2-row  
picker for  
steady work  
in heavy  
yields**

New picking power for Allis Chalmers D-19, D 17, WD 45 and WD Tractors!



**1963 National Corn Picking Contest Champion**

The new Allis-Chalmers Model 190 is engineered to boost corn-handling ability where it counts:

**3 GATHERING CHAINS PER ROW** — to keep heavy stalks and foliage moving.

**NEW-DESIGN SNAPPING ROLL SECTIONS** — for more aggressive action.

**NEW ROTARY FEEDERS** — keep big crop volume moving uniformly from snapping rolls to front elevator.

**NEW LARGE HOPPER** — for uniform delivery to wagon elevator.

**NEW FAN LOCATION** — well to the rear, mounted on elevator, for sure cleaning.

You GET the corn — with Allis-Chalmers long, sloping gathering snouts . . . adjustable stripper plates . . . fast, clean, rubber-on-rubber husking . . . shelled corn saves directly under husking beds.

Ask us about Allis-Chalmers' Time Payment Plans.

**ALLIS-CHALMERS**  
SALES & SERVICE



**L. H. Brubaker**  
Lancaster, Pa.

**N. G. Myers & Son**  
Rheems, Pa.

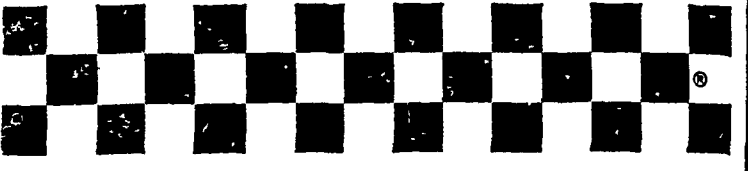
**Nissley Farm Service**  
Washington Boro, Pa.

**Allen H. Matz**  
Farm Equipment  
New Holland, Pa.

**L. H. Brubaker**  
Lititz, Pa.

**Grumelli Farm Service**  
Quarryville, Pa.

**Lausch Bros. Equipment**  
Stevens, Pa.



**Checkerboard News**  
**LEAST-COST PERFORMANCE**  
**CHOWS REDUCED COST**

New and far more exact formulation of Purina Poultry Chows reduced production costs as shown by 5 years of testing at the Purina Farm and Laboratories. Here's how the savings added up:

<b>START</b> A 4% reduction in feed consumption during first 8 weeks resulted in a saving per dozen of . . . . .	.04¢	
<b>GROW</b> A 15% average saving in feed required from 8 to 22 weeks made a saving per dozen of . . . . .	.15¢	
<b>LAY</b> Extra eggs produced with no increase in feed used made another saving per dozen of	.5¢	
<b>PAY</b> Added together the average saving per dozen eggs amounted to . . . . .	.69¢ = 7/10¢	
<b>PLUS</b> When new 15% Pro-Lay Eggena is fed, there is still another saving per dozen of up to . . . . . <b>Total saving per dozen</b>	<u>2/10¢</u> 9/10¢ or virtually 1¢	

Savings of 9/10¢ per dozen are worth going after. Think how much saving this would be with your flock. Check with us today for more information about these new Chows.

**LOW COST PRODUCTION . . .**  
**the reason why more farmers feed PURINA**  
©Registered trademarks—Ralston Purina Co.

**John J. Hess, II**  
Paradise - New Providence

**Ira B. Landis**  
Valley Road, Lancaster

**John B. Kurtz**  
Cedar Lane

**Wenger's Feed Mill, Inc.**  
Rheems

**James High**  
Gordonville

**Whiteside & Weickel**  
Kirkwood

**John B. Kurtz**  
Ephrata

**S. H. Hiestand & Co.**  
Salunga