

“Trademark” Your Cows Now

Are you a breeder of Registered Holsteins without a prefix name? Now is the time to correct that problem by establishing your own “trademark” in the industry. The use of an exclusive first, or prefix, name in registering animals of your breeding will add a bit of pride to your accomplishments.

There are other values, too: Your prefix will be yours alone, and has considerable value in the associated activities of show ring, publicity, advertising and merchandising.

Association member-breeders will be required by the Bylaws to have on file and use a prefix in naming animals for registration on and after January 1, 1965. Check page 210 of the August 10, 1964 WORLD (Herd Sure Issue) for more details.

There is NO CHARGE for reserving a prefix name.

If you do not have a reserved prefix on file in the Association office, establish one now for your exclusive use. We offer these suggestions:

1. Use a single word; multiple words may be used only when hyphenated to appear as a single word (not recommended).

2. Keep your prefix short to avoid problems in naming ani-

1965 FEED GRAIN DIVERSION PROGRAM UNCHANGED

Minimum and maximum acreage diversion under the 1965 feed grain program will be the same as in 1964, according to Fred Seldomridge, Chairman, Agricultural Stabilization and Conservation County Committee. The minimum diversion for participation will be 20 percent of the feed grain base. The maximum diversion will be 50 percent of the base or 25 acres, whichever is larger.

The Chairman explained that the diverted acreage announcement has been made early

malis; the animal's entire name cannot exceed 30 characters and spaces.

3. Consider your own surname as a prefix if it is not already in use by someone else.

4. Coin your own prefix word from parts of your own name, geographic location, historical event, or farm feature, the possibilities are virtually limitless.

5. When requesting a prefix reservation, select several prefix words, indicating your first, second and third choices. Send to —

Registry Department
HOLSTEIN-FRIESIAN
ASSOCIATION OF AMERICA
Brattleboro, Vermont 05302

in order to help farmers, particularly winter-wheat producers, in making plans for the 1965 production season.

While the 1965 voluntary wheat program is generally similar to the 1964 program, Mr. Seldomridge said, it does provide additional advantages including a substitution feature for growers who take part in both the wheat and the feed grain programs. Releasing the feed grain diversion percentages at this time will help wheat farmers plan their use of the substitution provision.

Other specific provisions of the feed grain program, which in past years have been modified from year to year depending on circumstances, will await more definite indications as to the outturn from this year's corn crop.

Signup for the 1965 wheat program in winter-wheat areas now is underway and will continue through October 2. Winter-wheat growers who sign up now will be able to modify their program intentions next spring at the time of signup for feed grains.

SAVINGS BONDS

Sales of U.S. Savings Bonds in Lancaster County for the first six months of 1964 totaled \$4,734,939, it was announced by Milton H. Ranck, county bond chairman.

Attend Church on Sunday.

Wm. Fisher Wins 4H Hog Roundup ● Farmer Loses

(Continued from Page 1)

William Fisher, East Earl R1, won first place in the 4-H Hog Roundup, and Grand Champion of the show. Bill is the son of Mr. and Mrs. Earl Fisher, and the crossbred hog he showed was bred at the Stauffer, Homestead Farm where Mr. Fisher is manager.

Reserve Champion was taken by a Yorkshire shown by Larry Weaver, New Holland R1.

There were 11 entries in the show. Each youngster had fed out two, or more, hogs then selected one of these to enter in the market hog show. The weight of these animals at show time ranged from 180 to 240 pounds.

The first four positions selected by Judge Harold Stewart, County Agent from Dauphin County, were Wm. Fisher, East Earl R1, Crossbred; Larry Weaver, New Holland R1, Yorkshire; Darlene Herr, New Holland R2, Yorkshire; Robert Fisher, East Earl R1, Crossbred.

wide, but the new foundation will be 45 feet wide to match the incoming barn. The old Hostetter barn was 100 feet long. When reassembled it will have 56 feet added to it. Reist plans to stable 100 cows in his new barn, almost doubling the size of his previous herd.

It might seem that a man could rebuild a barn at less cost than he could have one torn down, shipped in and reassembled. But when one considers that the timbers for the “new” barn are all pre-cut, and the frame members are all notched and ready to be assembled, there will probably be a pretty good saving in labor cost over the cost of building a new barn from scratch. In our area where farms on the industrial fringes of the cities are sometimes swallowed up, it might be practical to move a good barn to a new location in some cases rather than to build new.

FARM BUREAU

vote for
BIG BARGAINS

Farm Bureau's Winter

TIRE &
BATTERY SALE

(Accessories, Too!)

OCT. 1-DEC. 12

Cast your vote for savings on your winter driving needs.

Ask About The Big Combination Offer!

VOTE... YES
Today

SAVINGS UP TO
35% on Passenger Tires
and up to 45% on
Truck Tires
(These discounts are off
base price)

LANC. COUNTY
FARM BUREAU

LANCASTER 394-0541
NEW HOLLAND 354-2146
QUARRYVILLE 786-2126

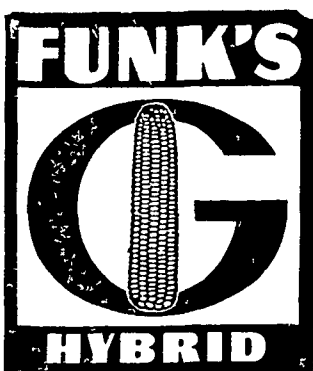
FOR MORE CORN PROFIT

USE THE TRIO OF
HIGH PROFIT PRACTICES:

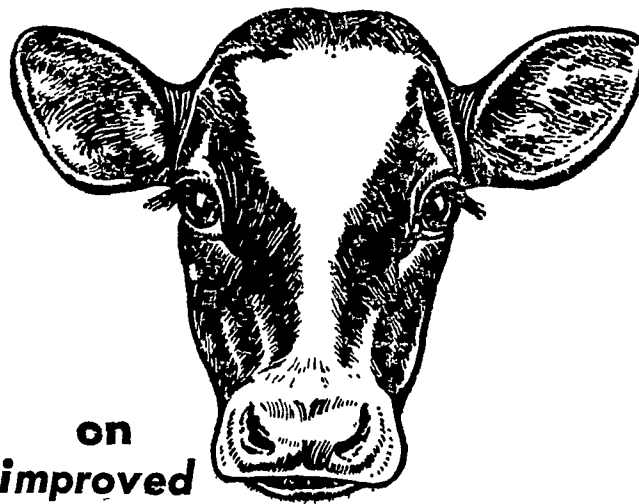
- 1 Start with a high capacity
FUNK'S G-HYBRID
- 2 Plant it THICKER...
- 3 APPLY EXTRA FERTILIZER
to feed the extra plants.

See Your Hoffman
Seed-Man or Phone

A. H. Hoffman Seeds,
Inc.
898-3421



STOCK UP



on
improved

BE-CO-NURSE

Buy 5 bags-Get 1 bag FREE

The new Be-Co-Nurse has been improved five ways to help you grow superior calves. Already proven on thousands of dairy farms, Be-Co-Nurse will now do a better job of calf raising than ever before, and still save you money. Here are the five improvements:

1. Be-Co-Nurse now contains 60% more digestible nutrients.
2. The new Be-Co-Nurse gives calves improved fleshing, glossier hair coats.
3. Be-Co-Nurse now contains the same amount of fat as dried whole milk.
4. Be-Co-Nurse can now be used for either replacement calves or veal calves by following the prescribed feeding schedule for each.
5. Each pound of Be-Co-Nurse is more efficient — less milk replacer is required per pound of gain.

And for a limited time only we will give you one bag of Be-Co-Nurse with each five bags you buy.

Why not call us today?

BOMBERGER'S STORE Elm	I. B. GRAYBILL & SON Strasburg
FARMERS SUPPLY COMPANY Lancaster	O. K. McCRACKEN Manheim
CLEM E. HOOBER Intercourse	MILLPORT ROLLER MILLS R#4, Lititz
GEHMAN'S FEED MILL Denver	EARL SAUDER, INC. New Holland

Beacon Division of Textron Inc.
YORK, PA.

