

## NEPPCO Show Will Feature Housing Talks

Eight experts from all over the northeast will gather in Harrisburg in October to form a panel on one of the most talked-about subjects in the poultry industry today, high density housing of layers.

Occasion will be the 27th annual Exposition and Convention of Northeastern Poultry Producers Council (NEPPCO) in Harrisburg's Farm Show Building on October 6-7-8. Some 5,000 poultrymen are expected to gather for the big annual event from all sections of the 14 northeastern states.

Forming an unusual "Information Please" group to discuss "High Density Housing and Management Technology," the industry experts will cover the field from finance and construction engineering to actual production and marketing on the farm level.

Operating like a fast-moving "quiz program", the panel will field questions from the audience on every possible phase of the subject, from the planning to the management problems cropping up with high density operations.

Making up the panel will be Hollis R. Davis, Cornell University agricultural engineer, Ithaca, N.Y.; Duncan F. Woodward, Pennsylvania Farm Bureau Cooperative production services manager, Harrisburg, Pa.; William A. Aho, University of Connecticut extension poultryman, Storrs, Conn.; Chester J. Tyson, Jr., Farmers Home Administration director, Trenton, N.J.; Phillip Chaffee, producer from Van Etten, N.Y.; Burnell Warner, producer from Union, Ohio; Hendrik Wentink, Miller & Bushong sales manager, Rohrerstown, Pa.; and Sabe S. Garjan, producer from Stoughton, Mass.

Egg, broiler and turkey producers will sit in on a score of other educational sessions and view the latest in industry equipment, supplies and services on display over an acre of area in the Farm Show Building.

Since 1935 . . .  
Your Dependable

# SALES EVERY TUESDAY



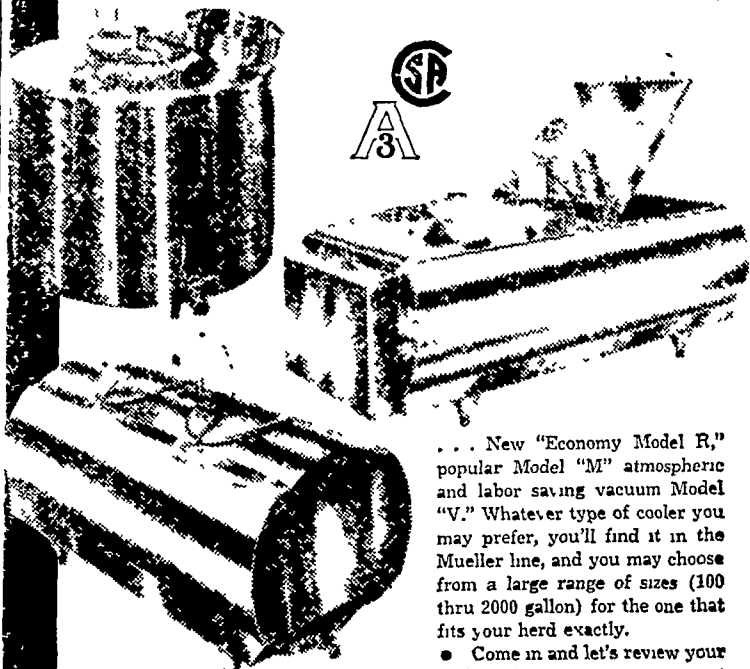
## Stanley S. Hoffer

LIMESTONE  
and  
FERTILIZER

Sowing

Paradise, Pa. 687-6860

# 3 models to choose from in the Mueller line of bulk milk coolers...



... New "Economy Model R," popular Model "M" atmospheric and labor saving vacuum Model "V." Whatever type of cooler you may prefer, you'll find it in the Mueller line, and you may choose from a large range of sizes (100 thru 2000 gallon) for the one that fits your herd exactly.

• Come in and let's review your milk cooling requirements . . . it may be the best investment you ever made.

**MUELLER**

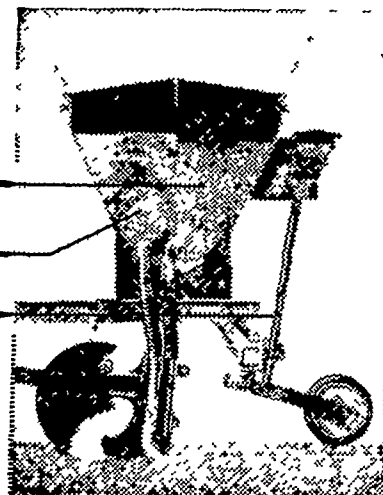
## L. H. BRUBAKER

R. D. 3, Lititz

350 Strasburg Pike, Lancaster

Phone: Lanc. 397-5179 — Strasburg 687-6002 — Lititz 626-7766

Better placed  
**GRAIN**  
**FERTILIZER**  
**SEED**



with  
**ALL-CROP Drills**

Accurate, MICRO-FEED placement through the TWIN BOOTS meters grain and fertilizer carefully . . . separately. No danger of burning.

Rear-mounted hopper for small seed puts clovers or grass in a band immediately in front of rubber press wheels. The result is a better stand, faster sprouting . . . and better weed control because only the seeded band is pressed.

Come in today. Let us show you the many other advantages of ALL-CROP drills that add up to better stands . . . with less seed.

Your Choice of Equipment—Single disc openers with regular bearings or sealed ball bearings, double disc openers, three kinds of hitches, wide or narrow press wheels.

ALL CROP is an Allis-Chalmers trademark.

Ask us about the Allis-Chalmers plan to finance your time purchase of farm equipment.

**ALLIS-CHALMERS**  
SALES AND SERVICE



L. H. Brubaker  
Lancaster, Pa.

N. G. Myers & Son  
Rheems, Pa.

Nissley Farm Service  
Washington Boro, Pa.

Allen H. Matz  
Farm Equipment  
New Holland, Pa.

L. H. Brubaker  
Lititz, Pa.

Grumelli Farm Service  
Quarryville, Pa.

Lausch Bros. Equipment  
Stevens, Pa.

## Lancaster Farming Ads Pay!

BE SURE TO VISIT US

AT THE

### LAMPETER FAIR

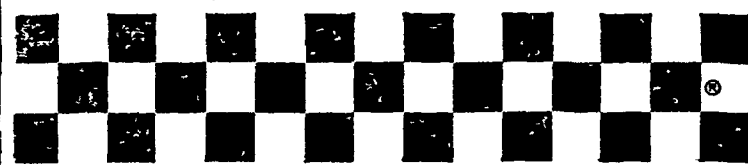
SEPT. 23 - 24 - 25

See the Latest in Spraying Equipment

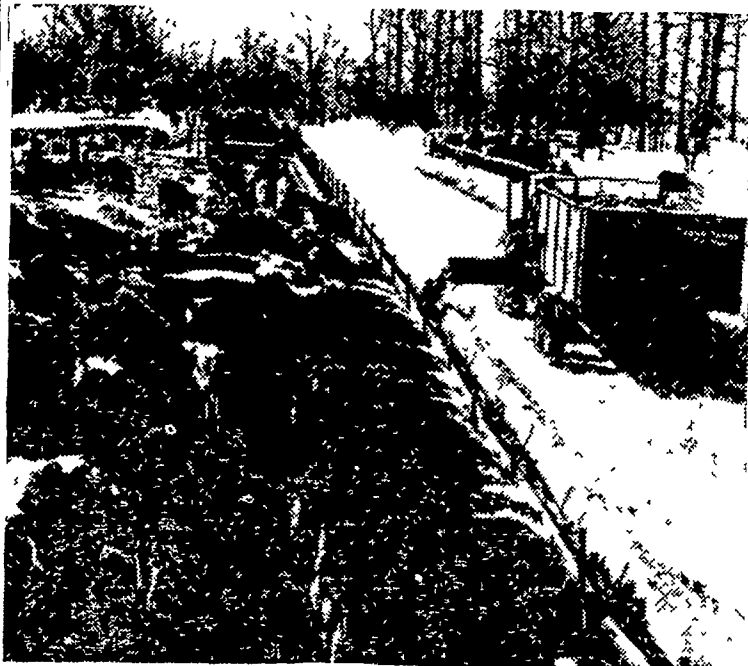
Lester A. Singer

Ronks, Pa.

Phone Strasburg 687-6712



## Checkerboard News



### HIGH ROUGHAGE or LOW ROUGHAGE?

The place for silage, hay and grass—Cattle feeders following a deferred system of growing, geared to their total farm production system, should use home-grown roughages during the growing period. Purina has a research-proved program to help get the most beef per acre or ton of roughage fed.

The place for "Built-in Roughage™" feeding—Purina's "Built-in Roughage" Program is designed to finish beef fast at low cost . . . get cattle on full-feed almost immediately. Saves labor and capital because it makes self-feeding easy, practical, efficient.

Regardless of your feeding program, Purina Special Steer Fatena is research-built and field-demonstrated to help you get top results. Ask for it by name at our Store with the Checkerboard Sign.

**LOW COST PRODUCTION...**  
the reason why more farmers feed **PURINA**®

©Registered trademarks—Ralston Purina Co.

John J. Hess, II  
Paradise - New Providence

Ira B. Landis  
Valley Road, Lancaster

John B. Kurtz  
Cedar Lane

Wenger's Feed Mill, Inc.  
Rheems

James High  
Gordonville

Whiteside & Weicksel  
Kirkwood

John B. Kurtz  
Ephrata

S. H. Hiestand & Co.  
Salunga