

For The Farm Wife
(continued from page 14)
sweet chocolate morsels (2 cups)

1 cup chopped nuts
Melt butter or shortening in large saucepan. Stir in brown mixture gradually. Stir in

sugar. Remove from heat and cool about 10 minutes. Sift together the flour, baking powder and salt; set aside. Add eggs to sugar mixture and beat till smooth. Blend in flour gradually. Stir in

chocolate morsels and chopped nuts. Spread in greased 15x10 x 1-inch pan. Bake at 350 degrees for 25 minutes. Cool; cut in 2-inch squares. Makes about 3 dozen squares.

Some peanut butter milk drinks to serve with cookies—
HONEY PEANUT BUTTER
1 quart milk
6 tablespoons honey
½ cup creamy peanut butter
Beat all ingredients together until thoroughly mixed. Refrigerate and serve cold.

MAPLE PEANUT BUTTER
1 quart milk
½ cup maple syrup
½ cup creamy peanut butter

(Continued on Page 19)

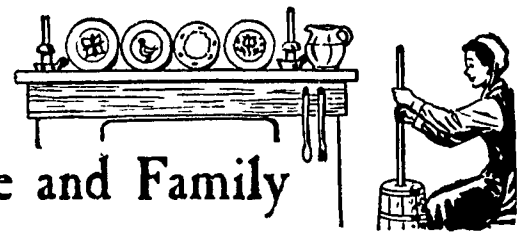
FARM LOANS

Loans for Machinery, Livestock, Cars, Repairs, and any farm purpose.
10 - 35 year Farm Mortgages
Full and part-time farms eligible

FARM CREDIT OFFICE

411 W. Roseville Rd.
Lanc. 393-3921

For the Farm Wife and Family



Ladies, Have You Heard? . . .

By: Doris Thomas, Extension Home Economist

Work Safely In Your Community Kitchen
A plan of work and good supervision go a long way toward preventing confusion and last-minute rushing which so often results in falls or burns.
Wear low-heeled shoes that fit comfortably. You may slip or turn your ankle if you wear high heels.

Keep the floor clean and dry and you can prevent falls. If someone spills water or grease, or drops vegetable parings or food, clean them up at once.

Keep boxes, mops, and brooms out of the way so you won't fall over them.

Use a strong stepstool or stepladder when you climb. And never try to reach above your head while you're on a stepladder.

Walk, don't run, while you are working in the kitchen.

To avoid collisions among workers, arrange traffic between the kitchen and dining room so no person can run into another. When there's just one door between kit-



THOMAS

chen and dining room, have a small window cut in it. And remind workers to always look before they enter the dining room or kitchen.

Some Safety Measures for Discarded Refrigerators

One of the best ways to make an abandoned refrigerator or ice box harmless is to take off the door. Sometimes you can do this in a few minutes with a screwdriver. But, if you can't remove the door, call the nearest office of the Refrigerator Service Engineers Society. Someone will come to remove the door without charge.

Another way to eliminate the hazard of a discarded refrigerator, is to fasten it tightly with metal strapping or padlock the unit. Strapping usually requires help of a professional.

Install metal or wood blocks to prevent the door from closing.

The greatest danger comes from older units being discarded or refrigerators temporarily out of use.

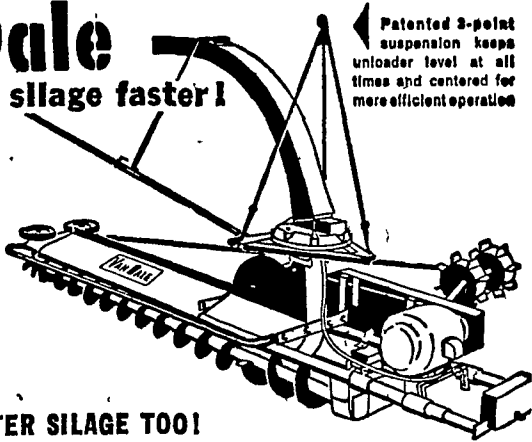
How Would You Cook Without Eggs?

Do you ever stop to think what you couldn't cook or bake if you didn't have eggs? Eggs have so many uses that they're one of our most versatile foods. Eggs beaten to various degrees of fluffiness give highness and tenderness to certain types of cakes.
(Continued on Page 16)

Get the BIG silo unloader value!

VanDale
Delivers more silage faster!

Double auger system digs the silage faster and more evenly under all conditions whether silage is frozen, wet, or dry.
Exclusive, adjustable drive hub gives more positive traction, keeps the machine operating evenly, and requires less power.



Patented 3-point suspension keeps unloader level at all times and centered for more efficient operation.

DELIVERS BETTER SILAGE TOO!

The double augers, operating in conjunction with the patented V-paddle impellers, digs the silage, mixes it thoroughly, and then throws it down the chute. Your cows and cattle get good, palatable silage . . . not a powdered mash as so often happens with unloaders using blowers.

TWO SIZES:

Standard—for silos 10' to 14'
Heavy Duty—for silos 12' to 30'

CALEB M. WENGER

R. D. 1, QUARRYVILLE, PA.
Drumore Center KI 8-2116

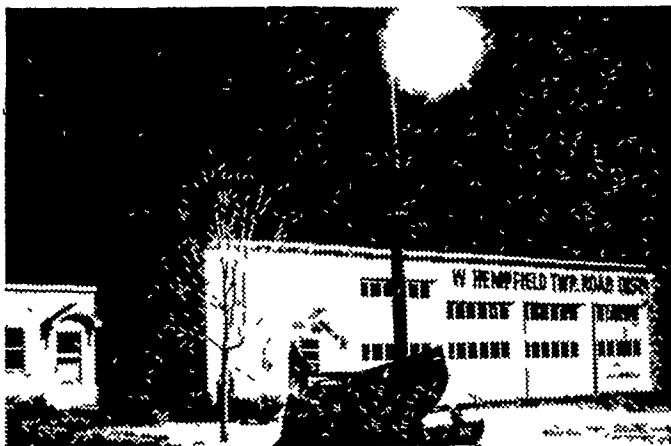
WRITE OR PHONE US FOR COMPLETE INFORMATION AND PRICES.



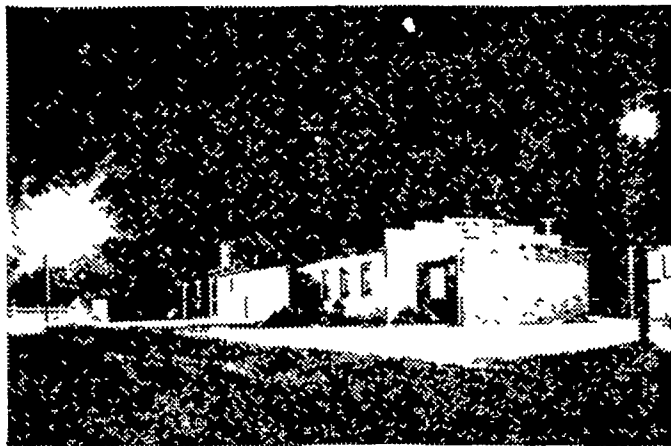
ROY C. AMENT HOME
R.D. 2, Mt. Joy



FRED C. HANDEL FARM
Mt. Nebo Road, R.D. 2, Holtwood



WEST HEMPFIELD TOWNSHIP ROAD DISTRICT BUILDING
Ivy Drive, Silver Spring



H. W. NAUMAN & SON LUMBER AND MILLWORK
Sprecher Road, R.D. 6, Lancaster

INSTALL NEW REDDY LITE SERVICE . . .

for Security . . . Safety . . . Convenience

\$4.00 per month

includes fixture, installation, electricity and full maintenance.

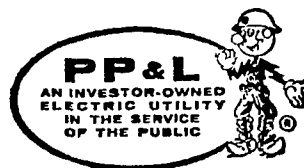
Solve that outdoor lighting problem with the brightness of a 6650-lumen, color-improved, mercury vapor lamp that automatically goes on at dusk, off at dawn. PP&L will install a Reddy Lite Service fixture on any existing secondary pole on your property, or

put in a new pole at any location within 150 feet of an existing secondary pole accessible to PP&L service vehicles, and where right-of-way is furnished. You can install any number at the low cost of \$4.00 per month each. Call your nearest PP&L office today.

OVER 15,000 ALREADY IN USE

Here are some excellent locations for REDDY LITE SERVICE:

- | | | | |
|-----------------|----------------|---|-----------------|
| Alleys | Driveways | Lumberyards | Pools |
| Auto Sales Lots | Farm Buildings | Patios | Private Streets |
| Clubs | Garages | Parking Lots | Schools |
| Churches | Gardens | Picnic Areas | Yards |
| Drive-Ins | Hospitals | or wherever you need better outdoor lighting! | |



Fertilizers For Fall Seeding

3-12-12

5-10-10

0-14-14

5-15-5

0-20-20

Available in Bags

Bulk or Spread

Call Us Today

ORGANIC PLANT FOOD CO.

GROFFTOWN RD., NEXT TO WATERWORKS

Ph. 392-4963 or 392-0374