

Weekly Broiler Report

Placements in the State by commercial hatcherymen during the week ending September 5 totaled 823,000 chicks for commercial broiler production according to the Pennsylvania Crop Reporting Service. This was a decline of 18 per cent from the previous week but an increase of 14 per cent from a year earlier. The 10-week total was up 11 per cent from last year. Eggs set for commercial broiler production totaled 1,071,000, 16 per cent below a week earlier but 4 per cent above the comparable period last year. The 3-week total was up 6 per cent from a year ago. In shipments of broiler-type chicks the past 10 weeks totaled 765,000 or 54 per cent above the comparable period last year — shipments of 1,284,000 were down 13 per cent. Placements in the 22 major producing states totaling 36,159,000 chicks, were 5 per cent below a week earlier but 5 per cent above last year. The 10-week total was also 5 per cent above last year. Settings totaling 47,120,000 eggs

were down 2 per cent from the previous week but were 2 per cent above last year. The 3-week total was 3 per cent above a year earlier. Eastern Pa. & New Jersey Demand for light type hens only fair with some lower paying prices noted. Prices at 6' reflect flock pickups under 1000 head in parts Eastern Pa. Offerings barely adequate. Supplies of heavy type hens spotty, but overall adequate for a fair buying interest. Prices paid at farm for light type hens 6-8¢ mostly 7-7½¢, heavy type hens 14½-15¢.

● Chicago

(Continued from Page 2)

Prime 1050-1125 lbs 26 25-26-50, Good all weights 22 00-24 00, Standard and Low Good 19 00-22 00, couple loads Utility 1025-1050 lbs. 17 25 17 50.

Slaughter heifers: Mixed Choice and Prime 925-1000 lbs 24 50-24 75, couple loads Choice with few Prime 1000-1025 lbs 24 25, Bulk Choice 800-1000 lbs 23 00-24 00, Good 21 00-22 00, Mixed Good and Choice 22 25-22 75, few Standard and Low Good 18 50-21 00.

Cows: Utility and Commercial closed at 13 00-15 25, few 15 50, Canner and Cutter 12 00-14 25.

Bulls: Cutter to Commercial 16 50-18 50.

● Delmarva

Prices Off Nearly 1/2c

Live broiler and fryer prices declined nearly ½c with demand fair but unaggressive for moderate auction offerings.

Ready to cook movement was fair for late week till-in, in instances. Future commitments were generally slow in developing, and only of a regular nature at competitive levels with other producing areas.

Delivered prices ranged unchanged to ½c higher, mostly unchanged to ¼c lower.

Eastern slaughter for Friday and Saturday was 791,000 head, compared to 838,000 head last weekend.

Prices paid in reported purchases for the 24-hour period ending 10 30 A.M. Friday broilers and fryers — 157 to 165 on 909,400 head, including 522,200 head purchased of 529,000 head offered at Eastern Poultry Growers Exchange on Thursday.

Thirty-one percent of the auction sales were at 160 to 164.

The Delmarva broiler feed ratio for the week ending Sept. 4th was 32. This was a decline of 2 points from the preceding week. Broilers averaged 15.92c per lb, and average mash price was \$98.11 per ton.

You don't have to be a cannibal to get fed up with people.

Weekly New York Egg Mkt.

From Monday, September 7th to Friday, September 11th

	Mon.	Tues.	Wed.	Thurs.	Fri.
WHITE					
Ex.					
Fcy. Hywts.		39½-40	39½-40	39-40	38½-39
Fcy. Hywts.		37½	37½	37½	37
Fcy. Med.		34½-35	33 33½	32	31
No 1 Med.		34½	33 33½	32	31
Pullets		24	21	21	21
Peeweels		13	17	17	17
BROWN					
Ex.					
Fcy. Hywts.		44	44	44	44
Fcy. Hywts.		41	41	41	41
Fcy. Med.		36	33 33½	33 33½	31½ 32
Pullets		24	24	22	21
Peeweels		13	13	17	17
MIXED					
Fcy Hywts.		37	37	37	37
Standards		33	33	33	32
Checks		27	27	27	24

TREND: Market weaker under a curtailment in demand and heavier offerings into this area.

Copyrighted 1964 By Urner Barry Co.

● New Holland

(Continued from Page 2)

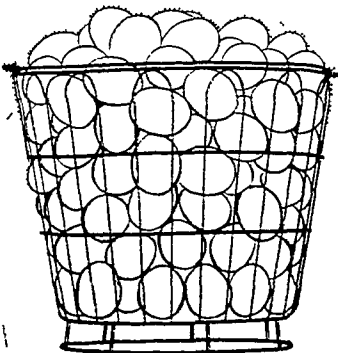
1850 to 1900 heavyweights brought 17 25 to 18, sows were 12 to 14½. Shoats sold for 8 killers 7½ to 8¢ per lbs pony to 12 50. Also at the Sept 7th sale 135 calves were sold, and the er at the Sept. 7th sale 407 and prime brought 34 to 36 hogs and 25 shoats were standard, 26½ to 29, good and cerved Hogs retailed at 19 to low choice, 29 to 34, common, 20 75, Wholesale (U.S. 1-3) 15 to 25.

Buyer of Oak, WALNUT, Poplar, ASH, etc.
C. J. CHARLES LUMBER
New Providence, Pa.
Phone ST 6-3108

LAY-BITS

Available only from Agway

for Top Production of Top-Quality Eggs



The big news in layer feed throughout the Northeast is LAY-BITS. Agway LAY-BITS is already famous for cutting feed cost and boosting egg profits.

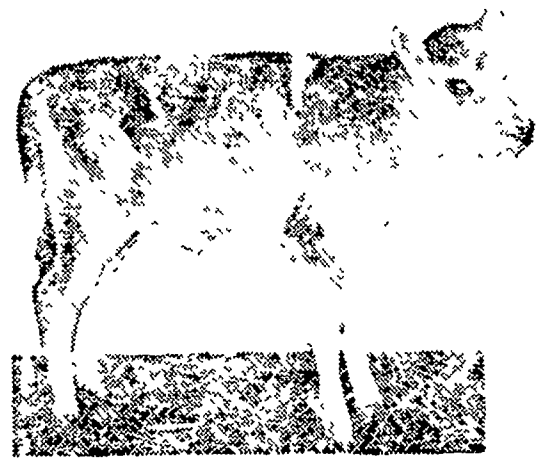
LAY-BITS is the modern feed for use in automated equipment — no jamming at spouts, no bridging in bins, no plugging corners, no dust or fines, no headaches! It will pay you well to order LAY-BITS soon. Call . . .

Agway Inc., Syracuse, N. Y.

Created by the united farmer members of Eastern States Farmers' Exchange and Cooperative GLF Exchange



Solve Your Ketosis Problems With The New Wirthmore KETROL



- KETROL provides the most economical method of Ketosis prevention.
- KETROL can be fed at the desired level with various types of Dairy concentrate feeds.
- KETROL — the simple most convenient Ketosis treatment.
- KETROL has a high sugar content, is palatable and highly effective in control of Ketosis.



Clem E. Hooper
Intercourse
768-3431

Paradise Supply
Paradise
687-6292

J. K. Stauffer & Son
Lawn and Bellaire
665-3121 — 367-2321