

## PENB Breeder-Hatchery Plan

A new breeder-hatchery financing program described as "one of the major steps in financing progress" has been announced by the Poultry and Egg National Board. The program for efficiently helping finance egg promotions through PENB has been developed by a newly-formed Breeder Committee, of which Dr. George F. Godfrey, Vice President of Honneger Farms Co., Inc., Forrest, Illinois, is Chairman.

Breeders in the program have agreed to help finance the PENB promotions at the rate of one-half cent per foundation pullet placed. Many of these breeders have also agreed to ask their associate hatcherymen voluntarily to match their one-half cent per breeder pullet. The breeders will include the hatcherymen's investment for the poultry and Egg National Board on their pullet billings. All money collected from their associates in this manner will be forwarded to PENB. Hatcherymen who do not choose to follow this method may continue to send their investment to PENB on a monthly or annual plan.

"The leadership provided by these breeders is one of the major steps taken in financing progress in many years," Kenneth K. Heideman, PENB's Director of Finance and Membership Relations said.

Breeders in this program are the following:  
 Babcock Poultry Farm, Inc  
 P.O. Box 286  
 Ithaca, New York  
 Cashman Leghorn Farms  
 Webster  
 Kentucky  
 Colonial Poultry Farms  
 Pleasant Hill  
 Missouri  
 DeKalb Agricultural Association, Inc.

## Another Leader Condemns Gov't Wheat Program

Charles B. Shuman, president of the American Farm Bureau Federation, the nation's largest general farm organization, recently sent the following telegram to President Lyndon B. Johnson at the White House.

"The current wheat program, enacted this year by the Con-

gress, in spite of the overwhelming disapproval of producers in the 1963 referendum, is a failure. The proponents of this complicated program claimed it would raise farm income. It has had the opposite effect. Market prices have been depressed and the sale of CCC wheat stocks is depressing the market even further. It is interfering with our ability to export wheat. It is the prime cause of an increase in flour and bread prices. It is greatly disrupting the whole wheat economy. Only about one-third of the 1,729,864 eligible wheat farmers are participating in the program, but all are being penalized. Farmers are making preparations for the 1965 crop. They should not be saddled with this program for 1965. It will further depress wheat farmers' incomes. I, therefore, respectfully recommend to you that you ask the Congress, while it is still in session, to repeal the legislation under which this program is being operated and substitute a price support program based on the market. Such a program is embodied in the wheat provisions of S. 1617, H.R. 6540, and other bills now before the Congress."

Mr. Shuman said copies of his telegram were being sent to the chairmen and ranking minority members of the agriculture committees of Congress and other Congressional leaders.

DeKalb Illinois  
 Demler Farms  
 P.O. Box 687  
 Anaheim, California  
 Ghostley's Poultry Farms, Inc.  
 Anoka Minnesota  
 Heisdorf & Nelson Farms, Inc  
 P.O. Box AA  
 Kirkland, Washington  
 Honneger Farms Co., Inc.  
 Forrest Illinois  
 Hy-Line Poultry Farms  
 1206 Mulberry  
 Des Moines, Iowa  
 Hubbard Farms, Inc.  
 Walpole  
 New Hampshire  
 Ideal Hatchery & Poultry Farm  
 115 West Main Street  
 Cameron, Texas  
 Kimber Farms, Inc.  
 P.O. Box 2008  
 Fremont, California  
 Parks Poultry Farm  
 R D 4  
 Altoona, Pennsylvania  
 Rapp Leghorn Farm, Inc.  
 Box 467  
 Farmingdale, New Jersey  
 Welp's Breeding Farm  
 Bancroft  
 Iowa  
 Arbor Acres Farm, Inc.  
 Marlborough Road  
 Glastonbury, Connecticut  
 Shaver Poultry Breeding Farms, Ltd.  
 Box 400  
 Galt, Ontario  
 Canada

**LONGER WEAR FROM HOSE**  
 Proper length and size of nylon hose mean better appearance, greater comfort, and better wear, reminds Mrs. Mae Barton, Penn State extension clothing specialist. Proportioned hose are sized differently up and down and around. Also, different brands vary in sizes. When you find the brand of stockings that fit your legs satisfactorily, ask for them each time you buy.

## Potato Insect Control Program For Babcock

Inspection of potato fields recently shows the insect situation to be largely one of watching aphid build-up. Leafhoppers were not plentiful. A few growers had trouble with late infestations of the potato beetle.

The green peach aphid is increasing in many fields; it was not a problem in others. We have been having aphid weather. For control of this aphid use Endosulfan (Thiodan) at 1 to 1½ quarts 2# per gallon emulsion or 1 pound 50% WP. Two applications at ten day intervals are needed. Growers using Systemics at planting time can expect this aphid now. If fields are very late, control of the aphid is necessary. Otherwise, if the crop is made, no control is suggested.

Maintain fungicide protection in your late sprays. Use maneb at 2½ pounds per acre. Late blight was reported in Erie County on August 12. Above average rainfall and cooler temperatures will have to occur hereabouts before we have blight-favorable conditions.

Sodium arsenite is still the most effective chemical for vine killing of potatoes. Various brands carry different percentages of actual chemical. Follow label directions. These directions should result in 8 to 10 pounds of actual sodium arsenite per acre. Potatoes should not be dug until the vines have been dead 10 days to 2 weeks.

The Presidential "E" Award for significant contributions to the export expansion program of the United States was presented to Babcock Poultry Farm after a giant poultry industry barbecue sponsored by the firm on Wednesday, August 19, 1964.

Over 3,000 poultry industry men and their families were on hand to witness the presentation and enjoy delicious barbecued chicken, the sounds of Schnickelfritz a famous German band, farm tours, free chicks and pony rides for the youngsters.

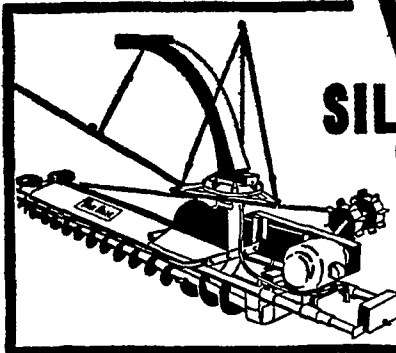
Presenting the award was Assistant Secretary of Agriculture John Baker, a featured speaker at the event. The presentation included an "E" citation signed by Assistant Secretary of Agriculture Orville L. Freeman and Secretary of Commerce Luther Hodges, which states that the award was given to the poultry breeding firm for its outstanding success in building foreign market for poultry breeding stock.

### PAYS TO PAMPER PIGS

Pamper your pigs until weaning age. A study showed that for each extra 10 lbs. of weight at weaning, the pigs needed 12 less days to reach market. Pigs averaging 50-54 lbs at weaning gained an average of 178 lbs per day; those weighing 35-39 lbs gained 163; 20-24 lb pigs gained 14 lbs. daily.

## Lancaster Farming Ads Pay!

### Complete automatic feeding for DAIRY COWS and CATTLE!

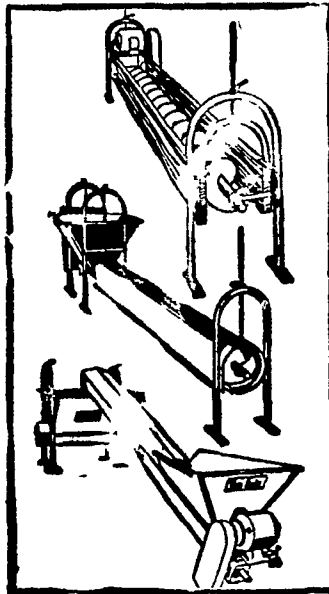


## VanDale SILO UNLOADERS

Double augers deliver more silage per minute even when silage is deeply frozen... and at a lower operating cost. Patented V-paddle impellers throw... not blow... silage down chute. Adjustable drive shoes give positive traction in all types of silage.

Three-point suspension keeps unloader level at all times.

### Plus a complete line of bunk feeders to meet your exact needs



#### Straight-out Auger Feeder

With VanDale units you can custom build the bunk feeding set-up to fit your needs. Drive section includes hopper, drive assembly and 10' high capacity 8" auger. Additional auger sections are in 10' units and are easily coupled.

#### Feed-R-Flo Bunk Feeder

The new, all-metal complete feeder. High capacity 8" auger rotates within tube. Gives all-weather protection, even feed distribution, and lower operating cost.

#### Conveyor Trough

An important link in automatic feeding. Positioned below silo chute, the VanDale conveyor trough carries the silage to the bunk feeder. Primary section includes hopper, drive assembly, and 10', 8" auger. Additional 10' auger sections may be added.

See us for modern automatic feeding equipment

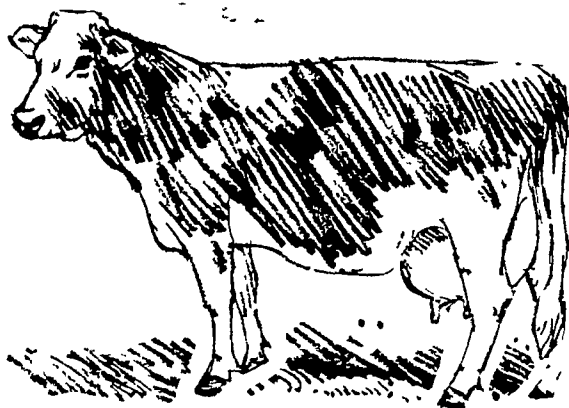
## CALEB M. WENGER

R. D. 1 Drumore Center KI 8-2116 Quarryville, Pa.

## For Dairy Herds On The Way Up...

# AGWAY'S NEW

## MILKERPELS



This new line of Agway dairy feeds is designed to raise your production, and your profits. Agway Milkerpels are high in energy, all pelleted rations specially formulated for herds with big capacities for producing milk. (And remember, most modern dairy cows have little trouble getting up to 15,000 lbs., if energy intake is at a high level).

### SHORT OF SILAGE SPACE?

- Put up all corn silage possible.  
 Corn contains at least 8000 lb. TDN per acre.
1. Place in a trench or put it on a pile.
  2. Pack it solid.
  3. Eliminate all air.
  4. Cover with AGWAY plastic.



# AGWAY, INC.

SYRACUSE, N.Y.

CREATED FROM EASTERN STATES AND GLF