

# Lancaster Farming

VOL 9 NO. 41

Lancaster Farming, Saturday, September 12, 1964

\$2 Per Year

## Arnold G. Lueck Is Assoc. Agent

Arnold G. Lueck, for the past three years, assistant agent in Lancaster county has been promoted to associate agent. It was recently announced by Thomas H. Patton, Director of Cooperative Extension Service of The Pennsylvania State University.

Mr. Lueck, of the Max Luecks, Brown, Wis., he was born on a farm and had 10 years of 4-H Club work. He prepared for college at Monmouth high school at the University of Wisconsin where he received a degree in agronomy in 1942, he was a student assistant in agronomy and worked part-time for the S. Department of Agriculture. He did graduate work at Pennsylvania State



From 1942 to 1950 he was a scientific aide at the U. S. Regional Pasture Research Laboratory at Penn State. From 1950 until 1961 he taught vocational agriculture, for two years in Chambersburg, and for two years at Jersey Shore.

Mr. Lueck is a member of two fraternal fraternities, Delta Kappa Epsilon, professional, and Alpha Tau Alpha, education.

In Lancaster county he is associated with County Agent M. W. Smith, with offices in the Post Office Building at Lancaster.

## Farm Calendar

- Sept 14-17 — Penna. All-American Dairy Show
- Sept 14 — 9 a.m. — State Junior Dairy Show, Farm Show Bldg., Harrisburg
- Sept 15 — Holstein Sale — Farm Show Bldg.
- Sept 15 — Manheim FFA, Selection and Feeding
- Sept 15 — Soil and Water Conservation meeting, Lancaster Court House
- Sept 15 — 7:30 a.m. — Lancaster Poultry Assn. Tour — from Poultry Center
- Sept 15 — Pa. Black and White Show Farm Show Bldg.

(Continued on Page 6)



Mr. Henry B. Engle, Research Agronomist, folded back one row of tobacco in the weed control plots at the P.S.U. Field Research Laboratory to show the difference a good weed-killer can make. The row showing bare ground was treated, the row to the right was not.

L. F. Photo.

## Cage Layer Plants Need More Powered Equipment

When we drive past the new, ultra modern cage laying houses that may be seen nearly anywhere in Lancaster county these days, we are impressed with the size of the structure, and perhaps give some thought to how the birds are "stacked" inside. But do we often think about the equipment involved in handling such large quantities of birds?

Mr. Stanley B. Mellinger, of the S. M. Mfg. Co., Inc., Lititz, does.

Mr. Mellinger, with his sons Stanley and Robert has been

operating a small, specialized manufacturing shop for 14 years. He produces some of the equipment that is so necessary to make these cage houses "go." The company makes powered feed carts, tractor pit cleaners, cross conveyors, and egg collecting carts. You might say S. M. Mfg.

(Continued on Page 6)

## WARNING . . . Silo Gas Time

It's that time again and we have a few words of caution about the possible dangers from "SILO GAS," a complex mixture of three oxides of nitrogen. Silo gas danger is greater in dry years. It is occasionally given off from silos recently filled with such crops as corn, oats, wheat, barley, rye, and certain weeds. It is a heavier than air gas — often brown or yellow in color — which settles in low areas in the silo, above the settled silage in the silo chute, and even in the dairy stable. The silo gas is very toxic to men and animals causing a burning sensation in the nose and throat and also choking and suffocation. Odor is similar to hypochlorite used in bleach and dairy disinfectants.

The most dangerous period is the first 10 days after filling, but it could persist all winter.

Perhaps it can't happen to you — perhaps. Observing the following precautions will

(Continued on Page 6)

## Tobacco Weed-Control Project Shows Promise

At the Pennsylvania State University (PSU) Field Research Laboratory near Lancaster the effects of various weed control chemicals are being studied.

The particular plot in which this study is being done was planted in mid-June. The plants will be harvested later this month and yield figures will be obtained for each treatment.

Each treatment tested is replicated, or repeated three times. To analyze the treatment differences statistically, it is necessary to have a sufficient number of plants and rows in each treatment to be certain that any differences found are due to the treatment and not simply to environment. Check rows are also necessary for that reason and a check row was used in this experiment on each side of each treatment.

The statistical analysis gets pretty technical. What the farmer wants to know is, "What did you use? How did you use it? and Was it any good?"

Two weed-control chemicals manufactured by Stauffer Chemical Co. are being used. These are "Eptam" and "Vernam." Each of these chemicals was tested for rate of application — three pounds and six pounds per acre, for form of material — granular and liq-

uid, and for time of application — preplant and post-plant.

Another material substituted urea was tested at two rates — three and six pounds per acre. In both cases it was applied prior to planting.

Diphenamid and Trifluralin were two other chemicals tested. Each was applied prior to planting at two rates — four and six pounds per acre.

Also a combination of these two materials, Diphenamid and Trifluralin was tested. In combination they have the much shorter trade name of "Tiefmid." Tiefmid was applied prior to planting at the rates of four and six pounds per acre.

On looking over the plot, we could see that there were many places where no weeds, or few weeds, were apparent. We asked Mr. Henry B. Engle, USDA Research Agronomist and Ass't Prof. of Agronomy

(Continued on Page 6)

## ASC To Change Election Methods

Changes in the method of electing county Agricultural Stabilization and Conservation committees and in the length of their term of office were announced recently by the U. S. Department of Agriculture. The legislation authorizing the changes has been approved by Congress and signed by President Johnson.

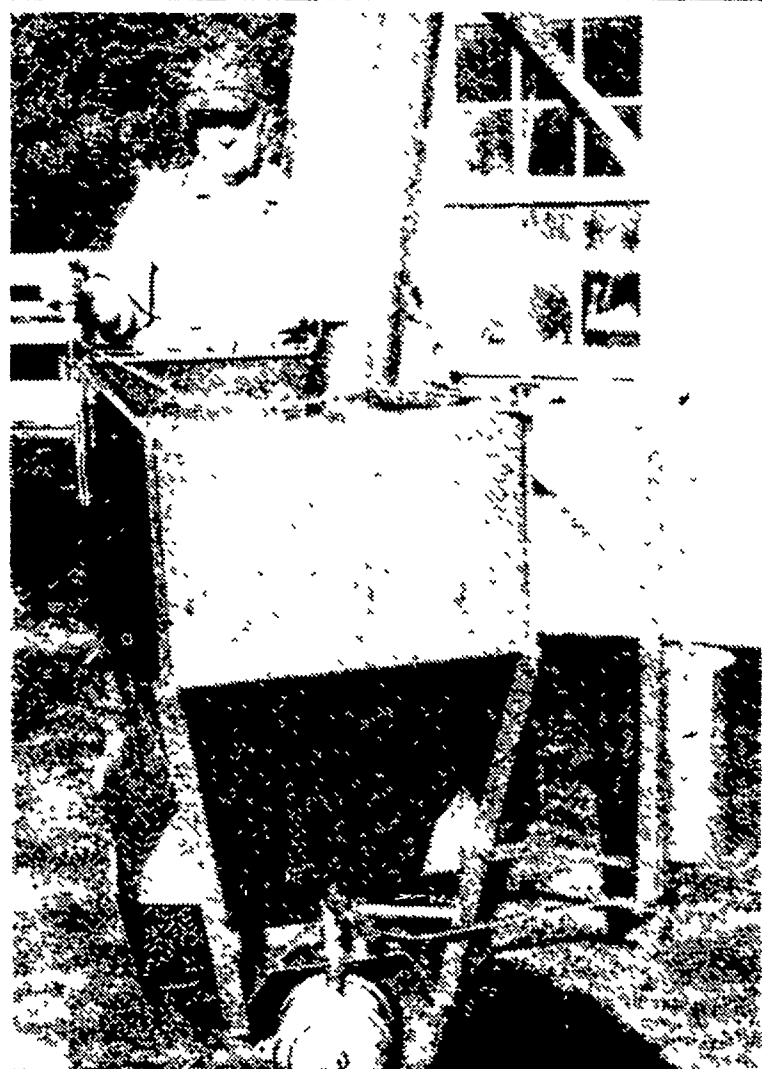
Under the new bill, three major changes relating to election of ASC county committees were authorized. These changes: (1) Establish a three-year staggered term of office for county committeemen instead of the existing one-year term; (2) Provide that a county committeeman may not serve more than three consecutive terms.

(Continued on Page 6)

## Weather Forecast

Temperatures for the five-day period Saturday through Wednesday will average 2 to 7 degrees below normal. The normal high and low temperatures for that period are 77 and 57 degrees. It will be cool at the beginning of the period, moderating by Monday and cooler again by Wednesday.

Precipitation may total .1 to .5 inches mostly in the western sections, and greater than .5 inches in the east. This will occur as rain over coastal areas by Monday, and again by Wednesday, and as scattered showers over the interior sections on Tuesday.



Mr. Stanley B. Mellinger demonstrates one of the battery-powered feed carts which are being turned out by the S. M. Mfg. Co., Inc., Lititz, Pa.

L. F. Photo.