

# Market News Reports

## At Lancaster Yards

**Weekly Review**  
**CATTLE:** 4600. Compared with 3776 last week. Supply included 25 per cent slaughter steers, 60 per cent feeder steers, with balance cows and bulls. Slaughter steers fairly active, steady to 25 lower, some sales late Monday fully 10 lower. Cows steady to mostly 50 lower. Bulls mostly 50 higher. Feeder steers steady to 60 higher.  
 Slaughter Steers Choice 1000-1350 lbs. 24.85-26.00, Few High Choice and Prime 26.00-26.50, Five loads Choice 1225-1300 lbs. 24.50-24.75, late Monday. Load High Choice with end Prime 1050 lbs 25.75 late Monday. Mixed Good and Choice 24.50-25.25, Good 23.75-25.00, Standard 22.00-23.75  
 Slaughter Heifers Part-load Good 600-800 lbs 20.75-22.10, few Standard and Good 800-1000 lbs. 17.50-21.00  
 Cows: Cutter and Utility 13.50-15.50, Few to 16.25, Early

## Vintage Sale

**Tuesday, Aug. 18**  
**CATTLE:** 541. Supply includes 25 per cent cows Slaughter steers steady to 25 higher, some sales 50 higher. Cows 25-50c lower. Bulls scarce.  
**SLAUGHTER STEERS:** Choice 1000-1300 lbs 25.00-26.25, Few Mixed Choice and Prime 26.00-26.75. Mixed Good and Choice 24.75-25.50, Good 23.75-25.00, Standard 21.50-23.75, Utility 19.00-21.50  
**COWS:** Cutter and Utility 13.75-16.10, Canner 12.25-14.00, Shelly canner 10.35-12.35.  
 Bulls. Utility to Good 19.00-22.00, Couple Choice 22.75-23.60, Cutter 17.75-19.25  
**FEEDER STEERS:** Few Good and Choice 840-845 lbs 20.00-22.75  
**CALVES:** 600 Vealers strong to 100 higher  
**VEALERS:** Choice 28.00-32.00, Few High Choice and Prime 33.00-33.50, Good 25.00-28.00, Standard 22.00-25.00, Utility 18.50-22.00, Cull 15.00-18.50  
**HOGS:** 80 Barrows and gilts mostly steady  
**BARROWS AND GILTS:** U S 1-3 185-235 lbs 17.60-18.00, U S 2-3 200-250 lbs 16.50-17.35  
**SHEEP:** 30 Not enough to fully establish trends. Spring Lambs Few Good 18.00-22.50, Couple Choice 23.00-23.50  
 Slaughter Ewes Cull to Good 3.00-5.50  
 (Continued on Page 3)

## New Holland Auction

Cattle: 1028. Supply includes 20 per cent cows. Slaughter steers moderately active, and steady. Cows steady to 25 lower, instances 50 lower. Cutter bulls steady to 50 lower; other grades steady. Feeder steers fully steady.  
 Slaughter Steers: Choice 1000-1300 lbs. 25.00-26.10, few High Choice and Prime 26.25-26.75, Good mainly 23.75-25.00, 1 Load 780-900 lbs. 23.00-24.00, Standard 21.50-23.75.  
 Slaughter Heifers. Few Standard and Good 750-950 lbs 17.75-21.85  
 Cows: Cutter and Utility 13.75-15.85, Canner and low Yielding Cutter 12.25-13.75, Shelly canner 11.00-12.00.  
 Bulls: Utility and Commercial 19.00-21.50, Good and Choice 21.00-23.25, 3 head 23.85-24.35, Cutter 17.00-18.75, few wasty commercial 18.00-19.00.  
 Feeder Steers Good and Choice 635-800 lbs 19.85-21.00 1 load and lot Choice 850 lbs 22.10, Medium 500-800 lbs 17.50-19.50  
 Calves 400 Vealers very active, strong to 100 higher, some sales \$2.00 higher.  
 Vealers Choice 29.00-34.00, Few High Choice and Prime 34.00-36.00, Good 27.00-30.00, Few 120-150 lbs 30.00-32.00, Standard 23.00-27.00, Utility 19.00-23.00, Cull 17.00-20.00  
 Sheep 4 Not enough on sale to establish a market.  
 Dairy cows sold steady at the August 19 auction, with 162 cows, 4 bulls, and 11 heifers changing hands.  
 Fresh Holstein cows brought \$250-550; Guernseys \$140-200 and other breeds \$150-200. Stock bulls were \$115-215, and stock heifers \$150-275.  
 At the August 17 sale horses, 292 head were on offer meeting a steady market with killers higher.  
 Riding horses were \$125-300, driving horses brought \$1280, and killers were 8 to 8 cents a pound. Pony mares were \$40-100, and geldings \$35-95.  
 At the August 17 auction  
 (Continued on Page 3)

## Chicago Cattle

**WEEKLY REVIEW**  
**CATTLE** — Salable receipts first four days 23,400 compared 24,100 week ago and 21,100 year ago. Twelve market receipts 184,500 compared 204,600 week ago and 200,000 year ago.  
 Compared last Friday, slaughter steers steady to 25 lower. Heifers steady to 25 higher. Cows 50-1.00 higher. Bulls 1.00 lower. Feeder 50 higher. In the Chicago carlot dress trade, steer beef 50-2.50 higher. Heifer beef 1.00 higher. Cattle beef 50-1.25 higher.  
 Slaughter steers Six loads Prime 1250-1375 lbs 26.75, Best High Choice and Prime 11,1450 lbs. 25.75-26.50, including number of loads mostly Prime 1200-1440 lbs. at 26.50, compared  
 (Continued on Page 4)

## New Holland Sales Stables, Inc.

### Sale Schedule

**Monday:** Horse Sale \_\_\_\_\_ 10:00 A.M.  
 Tack Sale to Follow Horse Sale  
**Hog Sale** \_\_\_\_\_ 11:00 A.M.  
**Beef Cattle** \_\_\_\_\_ 2:00 P.M.  
 Sale Order — Bulls, Steers, Cows, Calves  
**Wednesday:** Sale of Dairy Cattle \_\_\_\_\_ 12:30 P.M.  
**Thursday:** Sale of Beef Cattle \_\_\_\_\_ 12:30 P.M.  
 Sale Order — Bulls, Steers, Cows, Calves

**JOHN H. GINGRICH, Mgr.**

Ph. New Holland 354-2194 New Holland, Pa.

## Vintage Sales Stables, Inc.

PARADISE, PENNA.

Bulls, steers, butcher cows, Hogs, lambs and veal calves

Sold On Commission  
 Sale every Tuesday 2 P.M.

Fat hogs and Feeder pigs sale  
 Every Saturday at 10 A.M.  
 For marketing information  
 Phone Area Code 717-442-4181  
 Box 100 Paradise, Pa.  
 10 mi. East of Lancaster on Rt. 30  
 Kenneth E. Hershey, Sales Manager

## AUCTION OR PRIVATE TREATY

YOU DECIDE BY WHICH METHOD YOU WANT  
 YOUR CATTLE SOLD AND THEN

## Consign With Confidence

TO

## Walter M. Dunlap & Sons

LIVESTOCK BROKERS

CATTLE ● CALVES ● HOGS ● SHEEP

Union Stock Yards, Lancaster, Pa.  
 Tel: 397-5136



- Cattle Auction Every Wednesday Starting At Noon
- Listen To Our Market Newscast Monday and Wednesday At 7 A.M. WLAN 1390

"THE OLD DEPENDABLE" — SECOND TO NONE

## Service To Farmers -

Is your livestock ready for market?  
 Be sure, be safe and consign to . . .

## J. M. Hooper, Inc.

Lancaster Stock Yards  
 Phone 397-6191

Private Treaty daily

Wednesday, Auction Market starting at 12

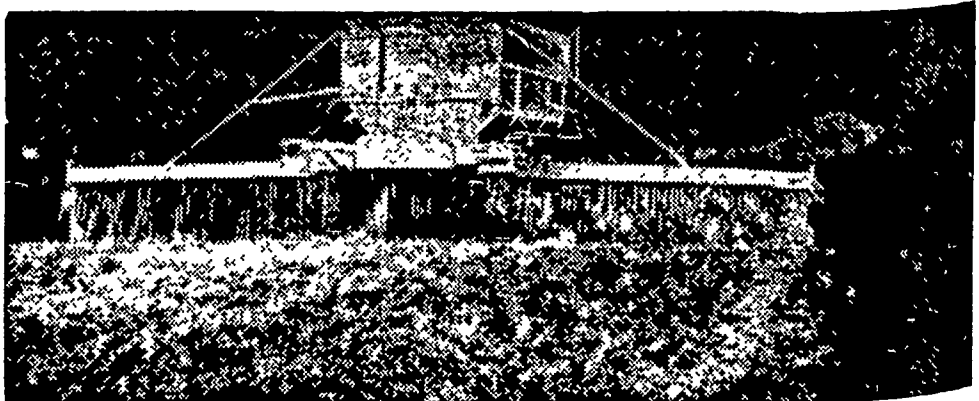
- Tell your trucker "Hooper sells these."

Listen to our weekly radio market broadcast Wednesday morning 8:05 Ephrata 1310 (WGSA)

Feel free to call us.

See us before buying your stocker and feeder cattle.

## MARTIN'S LIMESTONE



Order your Limestone now for even spreading by our modern spreaders.  
 Quick Service Free Soil Tests Quality Limestone

## Ivan M. Martin, Inc., Blue Ball, Pa.

Telephones: New Holland 354-2112 Terre Hill 445-3455

GAR Hickory 2-4148