

AVAILABLE NOW

- Cert. Buffalo Alfalfa
- Cert. Vernal Alfalfa
- Cert. Ranger Alfalfa
- Cert. Naragansett Alfalfa
- Cert. Pennscott Clover
- Lincoln Brome Grass
- S-37 Orchard Grass
- Reeds Canary Grass
- Timothy
- Cert. Climax Timothy
- Ladino Clover
- Pasture Mixture
- Balboa Rye

ORDER YOUR FALL SEED GRAIN NOW

- Balboa Rye
- Norline Winter Oats
- Cert. Wong Barley
- Cert. Pennrad Barley
- Cert. Redcoat Wheat
- Cert. Dual Wheat
- Cert. Seneca Wheat
- Cert. Pennoll Wheat

P. L. ROHRER & BRO., INC.

SMOKETOWN

Phone Lanc. 397-3539

Fulton Grange Plans Trip To World's Fair

Fulton Grange #66 met August 10 at Oakryn. The Grange is taking a one day tour to the New York World's Fair, Saturday, September 12 by railroad, leaving Lancaster at 6 a.m. and returning at 11:30 p.m. Cost of the tour is \$13.50 which includes round trip and admission. The public is welcome to go and reservations should be made soon. Fees should be paid to the committee by September 5 and mailed to chairman Clair Murphy, Hillcrest Ave., Quarryville.

At the next meeting, August 24, Miss Mary Lou Wesley will show slides of the fair and tell the most interesting places to visit. The local 4-H club will show the dresses they have made this summer. Also nomination for new officers will be held.

Fulton Grange will be the host to the Lancaster County Pomona Grange Picnic, Saturday, August 15, at 7:30 p.m. Members are to bring a meat dish and another dish, own silver, plates and cups. Rolls,

● Tobacco

(Continued from Page 1) improved the situation. The crop grew rapidly and progress on August 1 was about normal. Although most of the crop is currently in good shape, moisture is now needed to continue what appears to be a good tobacco producing year.

As of August 1, some of the tobacco plants were quite small but the majority of the

butter and drink will be provided.

Pomona lecturer, Miss Marie Murphy will have a talent show after the picnic. A Flower show in charge of Mrs. Norman Wood was held. Mrs. Samuel Wenger and Mrs. Ira Holtzauer were judges. Winners were: potted plants, Mrs. Ray McSparran; table arrangement, Mrs. Ralph Armstrong, best wild flower bouquet, Miss Rebecca Kirk; miniature arrangement, Mrs. Norman Wood; miscellaneous cut flowers, Mrs. Ralph Armstrong, and best single species, Miss Rebecca Kirk.

The lecturer, Charles McSparran, had charge of the program and a talk on "Art and Rural Landscaping" was given by Mrs. Adeline Edwards

crop has been cultivated for the last time. Seed heads were appearing and topping was getting underway. Some cut worm damage is present in unsprayed fields.

SALE REGISTER

Saturday, August 22 at 12:00 Complete Dispersal Sale of 25 Holstein and 2 Guernsey cows, and machinery, in Southern Lancaster County, Little Britain Twp., south of Little Britain. Owner Sherman "Cy" Shuller

Stanley S.

Hoffer

LIMESTONE

and

FERTILIZER

Sowing

Service

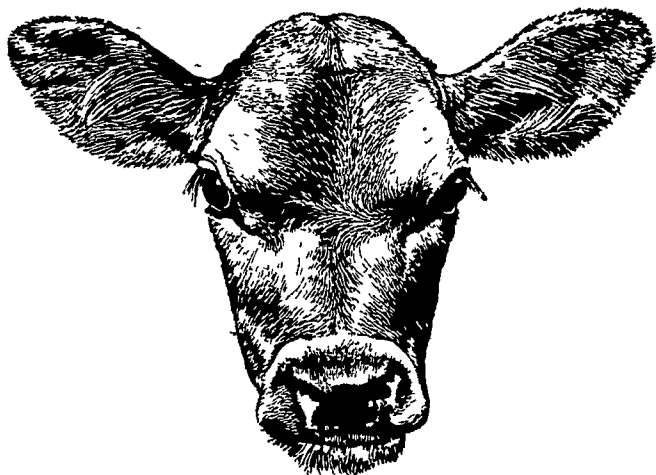
Paradise, Pa.

687-6860

TO SPEED UP GROWTH

FEED GO-CALF

The True Milk Replacer



BABY CALF FORMULA

THE MILK AND ANIMAL FAT FORMULA FOR ALL BABY ANIMALS GUARANTEED TO PERFORM LIKE WHOLE MILK!

FOR ASSISTANCE IN

- PROGRAMMING
- PLANNING
- MANAGEMENT

Make an appointment with our Dairy Specialist, or Call Us Direct at Lancaster 392-2145.



Miller & Bushong, Inc.

Rohrerstown, Pa.

Ph. Lancaster 392-2145 (Area Code 717)

FINEST SERVICE ANYWHERE

SHAVINGS & PEANUT SHELLS

Shavings — Coarse or Fine

Bagged, Paper or Burlap

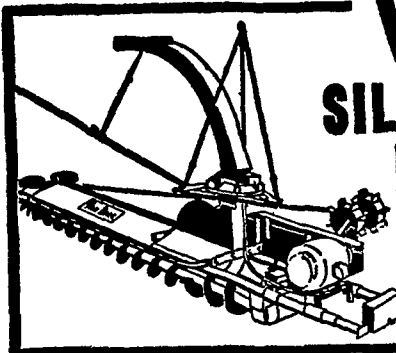
Trailer Load Prices — Bagged or Bulk

HAROLD B. ZOOK

Phone 394-5412 Lancaster

220 Lampeter Road

Complete automatic feeding for DAIRY COWS and CATTLE!

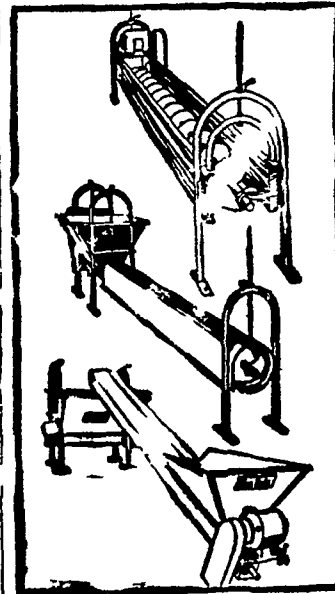


VanDale SILO UNLOADERS

Double augers deliver more silage per minute even when silage is deeply frozen . . . and at a lower operating cost. Patented V-paddle impellers throw . . . not blow . . . silage down chute. Adjustable drive hub give positive traction in all types of silage.

Three-point suspension keeps unloader level at all times.

Plus a complete line of bunk feeders to meet your exact needs



Straight-out Auger Feeder

With VanDale units you can custom build the bunk feeding set-up to fit your needs. Drive section includes hopper, drive assembly and 10' high capacity 8" auger. Additional auger sections are in 10' units and are easily coupled.

Feed-R-Flo Bunk Feeder

The new, all-metal complete feeder. High capacity 8" auger rotates within tube. Gives all-weather protection, even feed distribution, and lower operating cost.

Conveyor Trough

An important link in automatic feeding. Positioned below silo chute, the VanDale conveyor trough carries the silage to the bunk feeder. Primary section includes hopper, drive assembly, and 10', 8" auger. Additional 10' auger sections may be added.

See us for modern automatic feeding equipment

CALEB M. WENGER

R. D. 1 Drumore Center KI 8-2116 Quarryville, Pa.