

**Crop Summary**

**Harvesting In Full Swing**

Harvesting and tobacco transplanting continued in full swing this week in the county.

Soil moisture became increasingly short in many areas of the state during the week ending June 29, according to the Pennsylvania Crop Reporting Service. Irrigation was being used more generally to offset a lack of adequate rainfall.

Row crops were cultivated and sprayed for weed control.

Combining of barley proceeded rapidly in the southern counties. Wheat has headed well and is turning yellow. Much oats headed on short straw. Corn stands are very spotty and range from 10 inches to waist high. The dry weather and cool nights have slowed corn growth. Some corn is being planted for silage.

Hay and pasture conditions vary widely even within localities. Reports range from no grazing possible to good pasture within the same county. Hay making is progressing rapidly throughout the state. Hay quality and yield are generally good. Alfalfa weevil is causing some damage in the central counties. Some second crop alfalfa hay is being made.

Sweet cherry harvest is in full swing. Yields are especially good in the important Lake Erie fruit belt. A few areas are having some trouble with bird damage and rot. Some sour cherries are being picked. Thinning and spraying of apples in the southern and central areas continues. Early varieties of peaches are showing color.

**Pest Control Chemicals To Be Controlled**

UNIVERSITY PARK, Pa. — Plans for the effective control of pesticide residues on farm commodities were initiated jointly today by the Pennsylvania State University College of Agriculture and the State Department of Agriculture.

Leland H. Bull, State Secretary of Agriculture, and Dr. Russell E. Larson, dean of the College of Agriculture, said primary concerns are for quality control in farm products and assurance to consumers that they are getting wholesome commodities.

They said emphasis will be placed on research, and that laboratory facilities of the department and those of the college will be pooled for making necessary analyses. This joint approach, they pointed out, will speed up the work and avoid duplication of effort.

Both indicated they will be working closely with farmers throughout the state to study problems of insect and disease control as an aid to the producer and to assure consumers of getting clean and wholesome products.

Pesticide recommendations, they explained, are made in accordance with federal laws and regulations which stipulate the various tolerances. These recommendations are uniform for all states.

Dean Larson and Secretary Bull said Pennsylvania farmers have a good record for the safe use of pesticides and that every effort is being made for safeguarding users of pesticides and feed additives and

Potatoes are in good condition and show good growth. Early stands in Lehigh county are in bloom.

Some snap beans are being planted in the north, while in the central areas they are beginning to bloom. In the south harvesting should start in early July. Beets, sweet corn, cucumbers and tomatoes are growing well. Some beet harvest is taking place. Early sweet corn areas have good stands with some plants in tassel. In later areas the stands are more irregular. Lettuce and cabbage are growing well in the southern areas with harvest starting.

**• Have You Heard?**

(Continued from Page 7)

paring. Cook in as little water as possible and use the cooking liquid in soups and gravies.

It's wise to start cooking potatoes in boiling water. And when the water has reached boiling, reduce the heat to just bubbling—never violently boil a potato. Boiling cooks the outside before the inside, and by the time the inside is tender the outside is overcooked. The smaller the pieces, the quicker they cook. So if you are in a hurry, cut potatoes into halves, quarters or cubes . . . but do not increase the cooking temperature.

Cold cuts are an economical meat buy. Every ounce is edible, and a pound makes at least four servings. Cold cuts

compare favorably in nutritive value with fresh meats—they provide the same kind of high-quality, body-building protein that is in all meats. The easiest way to add important nutrients to your daily menu is to form the habit of serving a glass of milk with every meal.

**ANIMALS NEED SHADE**

Farm animals like available shade from the hot sun, too, says Thomas King, extensive animal science specialist at the Pennsylvania State University. If no natural shade is available in the pastures, you can set four poles in the ground use a framework of light pole for the roof and cover with straw or corn stover held in place by woven wire.

Buy or sell with a classified ad!

**PATZ**

Sales & Service

Barn Cleaners - Silo Unloaders - Cattle Feeders

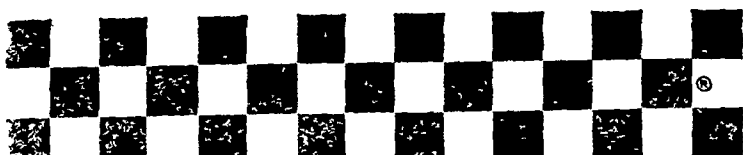
**Robert K. Rohrer**

Quarryville, R. D. 1  
Hensel KI 8-2559

**FOR MORE PROFITABLE CROPS**



**A. H. HOFFMAN SEEDS, INC.**  
Landisville, Penna.  
Serving farmers with best quality seeds since



**Checkerboard News**



**NEW, IMPROVED PURINA PIG-PLUS!**

Yessir, Purina has come up with another greatly improved Health Aid . . . and this one's for your pigs. It's new, improved Purina Pig-Plus. Last year's Pig-Plus was great . . . but this one's even greater! More extra "plus power" has been added to give pigs even better health protection and faster growth than last year's popular product.

Five years of Purina Research went into this high-powered combination of vitamins, minerals, antibiotics and sulfas. Now, it's ready for you at our store. Ask us to mix in just the right amount of new Purina Pig-Plus in your next pig ration. You'll see for yourself . . . a little Pig-Plus can do a lot for your pigs.



**LOW COST PRODUCTION . . .**  
**the reason why more farmers feed PURINA**

©Registered trademarks—Ralston Purina Co.

**John J. Hess, II**  
Paradise - New Providence

**John B. Kurtz**  
Cedar Lane

**James High**  
Gordonville

**John B. Kurtz**

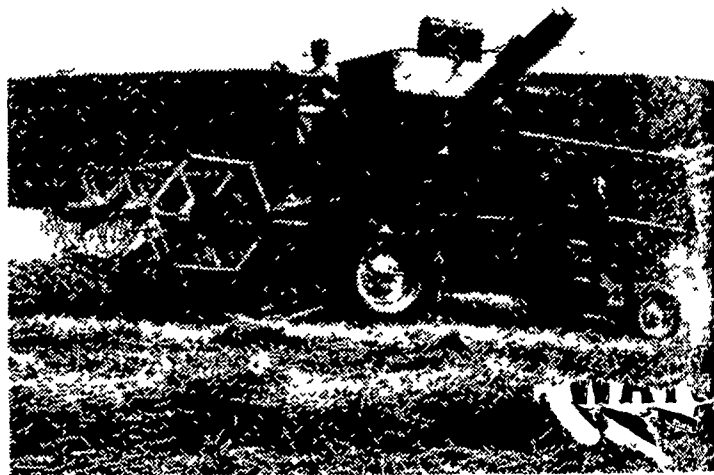
**Ira B. Landis**  
Valley Road, Lancaster

**Wenger's Feed Mill, Inc.**  
Rheems

**Whiteside & Weicksel**  
Kirkwood

**S. H. Hiestand & Co.**

**Up to 20% more output!**



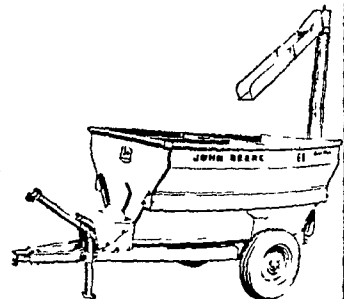
**With a NEW JOHN DEERE combine**

The new John Deere 45 Self-Propelled can do up to 20 percent more work than its 1963 counterpart—up to five days' work in four days' time.

Main reason for this terrific performance increase is the new, exclusive cell-type separating grate. It reduces the load on the walkers and allows you to speed up 1/2 to 3/4 gear without increasing grain loss . . . without paying a single penalty.

Bigger grain tank, faster unloading, higher unloading auger, and redesigned operator's platform are just a few of the other improvements in the 45 Combine. Stop in soon and get the full story. Credit available.

Here's the perfect mate for a combine. Haul your feed, seed, and small grain . . . unload 90 bushels in 3 minutes with the John Deere 68 Auger Feed Wagon.



**Alan Beyer**

Christiana LY 3-5687

**Wenger Implement Co.**

Buck BU 4-4467

**Landis Bros. Inc.**

Lancaster 393-3906

**A. B. C. Groff, Inc.**

New Holland 354-8001

**H. S. Newcomer & Son**



**Shotzberger's**

Elm 665-2141

**M. S. Yearsley & Sons**

606-2900