



INDIVIDUAL STALLS FOR BULLS at the Southeastern Pennsylvania Artificial Breeders Cooperative feature water bowls and a concrete feed trough coated with an epoxy material. Looking over the nearly-completed stalls are Walter B. Peeples of the Standard Equipment Company, and Roger Gundlach, in charge of Program Communications for Atlantic Breeders Co-operative. L. F. Photo.

● SPABC

(Continued from Page 1)

spreaders.

The stalls, sloping three inches front to back for good drainage, will be floored with 3/4 inch rubber mats and bedded lightly with wood shavings.

Weidler estimates that all but the very largest bulls will be comfortable in the 90x54 inch stalls. Concrete slabs between stalls will keep the bulls from bothering each other.

The increased livestock pop-

ulation in the barn raises a ventilation problem. A forced air system is being installed along with an addition to the present lighting system. Light-

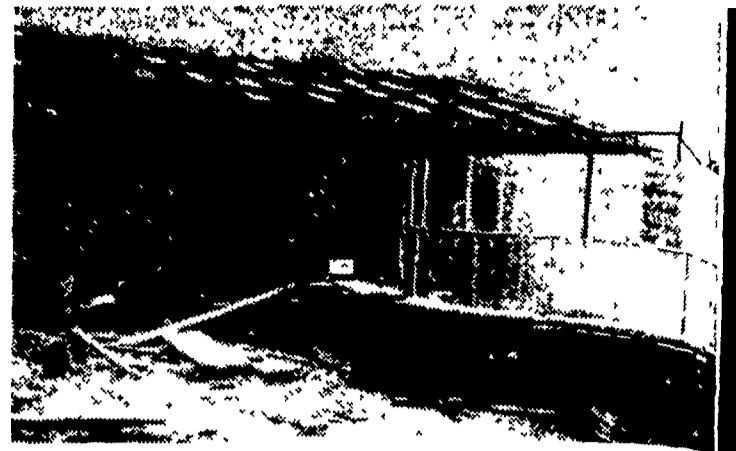
ing will also be improved by the addition of glass block in the walls. The lower half of the present doors to the bull yards will be closed with concrete block, and the top half will have glass block.

The addition of the 29 bulls from WPABC to the 35 already at SPABC poses a problem of feed. The concrete stave silo which stood at the rear of the building was sold and removed to make room for the 38x83 foot addition. In its place a 24x40 oxygen-free silo is being erected; it will be filled with 400 tons of corn silage in the fall. Hay storage at present will hold all the hay that can be produced on the available ground. Additional hay will be purchased as needed.

Grain rations will be stored in a new five ton outdoor bin with auger delivery to the silo room.

The expansion program marks the first major change in the bull barns since they were built in 1950; however, larger and more modern laboratory facilities and collection room were put into use in March 1963 when SPABC switched from fresh to frozen semen.

When the Atlantic Breeding Cooperative begins operations, 116 technicians will be serving approximately 30,000 dairy herds in 38 Pennsylvania



ROOM FOR 400 TONS of corn silage will be provided by the oxygen-free silo under construction at the Southeastern Pennsylvania Artificial Breeders Cooperative. Extension to barn facilities is nearly complete. Workman at the silo is John Kauffman, Bird-in-Hand, who is bolting the metal silo together. Inside will be painted with an epoxy material. L. F. Photo.

counties and three counties in Delaware.

Roger Gundlach, in charge of program communications for ABC, said this week, "The sire program will continue to be proven sires whenever available and sampling young bulls for A1 proofs."

He said all SPABC members will automatically become members of ABC, and members of WPABC will be issued new membership certificates.

All personnel at the Lancaster office will continue in their present duties. Five members

of the supervisory staff at Clarion will move to the Lancaster area. One man will join the barn crew at Lancaster; two will join the laboratory staff; one will serve as bookkeeper, and one will be named "Sire Analyst." The present WPABC technicians will continue in their present area and will be supplied once a month with semen stored in liquid nitrogen.

The merger of the two cooperatives was approved by members in district meetings last spring.

"Hitch Your Silo Filler To A Star"

Weaver Star Silo Co.

R. D. #1, Myerstown

866-5708

Poured Concrete Silos - Grain & Industrial Bins



If You Can't Afford To Carpet Your Barn ...

Use **MARTIN'S BARN-DRI**

- Keeps barn clean and sanitary
- Sweetens the air
- Reduces slipping

IVAN M. MARTIN, INC.
Blue Bell, Pa.

354-2112 445-3455 442-4111

SPRAYING Service
Dairy Barns
Poultry Houses
CARBOLA
Disinfecting White Paint
● Dries White
● Disinfects Against Disease
● 90% Less Cobwebs 8 to 10 Mo.

Fly Spraying
DISINFECT
POULTRY HOUSES
6 Witmer Rd., R4, Lanc.
Maynard Beitzel
Phone 392-7227

FOR MORE PROFITABLE CROPS



See your Hoffman Seed Man now for Top Quality Hoffman Rye Grass and Annual Field Bromegrass. Your corn acreage needs these soil-saving cover crops.

Hoffman FARM SEEDS
LEAFY • CLOVER • PASTURE
FUNK'S HYBRIDS



REG. U.S. PAT. OFF.

MA

Dependable disease protection

New