

# Weekly Broiler Report

Placements by State hatcherymen during the week totaled 905,000 chicks for commercial broiler production, according to the Pennsylvania Crop Reporting Service. This was 5 per cent above the previous week and 28 per cent above a year ago.

The 10-week total was 6 per cent below the comparable period last year. Settings, totaling 1,151,000 eggs for commercial broiler production, were down 1 per cent from last week and 15 per cent below a year earlier. The 3-week total was 9 per cent below a year ago.

Inshipments of broiler-type chicks for the past 10 weeks totaled 577,000 or 48 per cent above last year. Outshipments of 1,267,000 were down 35 per cent.

Placements in the 22 major producing states, totaled 46,680,000 chicks for commercial broiler production, increased by 1 per cent over both a week earlier and a year ago. The 10-week total was down 1 per cent from last year. Eggs set remained the same as a week earlier but were 1 per cent below last year. The 3-week total remained the same as a year ago.

## EASTERN PA. & N. J.

### Live Poultry 5/27/64

Demand only fair for adequate supplies of heavy type hens. Some bids of 14¢ refused by producers holding for 15¢. Interest for light type hens light to fair for the adequate

supplies. Some supplemental processing supplies noted from outside the area, particularly New York State. Prices paid at farm for heavy type hens 13½-14½¢, mostly 14½¢, light type hens 7-8 mostly 7-7½¢.

## Dr. Shook

(Continued from Page 2)

the next four years, he served as clinical veterinarian to the university's herds and flocks, taught veterinary medicine and did research.

From 1952 he practiced veterinary medicine in Centre county until joining the Department of Agriculture as field veterinarian. In 1958 he was named chief of the meat hygiene division, a position he has continued to fill along with the acting directorship.

He will continue to direct the bureau's program relating to prevention, control and eradication of livestock and poultry diseases; the inspection of meat and meat food products; also diagnostic services and dog law enforcement.

He is a member of the Pennsylvania and American Veterinarian Medical Association and Alpha Gamma Rho and Alpha Zeta fraternities. Active in church work, he is a member of the council of administration and superintendent of Sunday School.

He is married to the former Jean Watts, of Spring Mills. They have two sons.

## Delmarva Prices Down; Demand Is Fair

Live broiler prices in Delmarva decreased approximately a quarter cent during the 24 hour period ending 10:30, Thursday morning.

Prices ranged 142 to 154 on reported purchases of 527,800 head including 507,600 purchased of 546,000 head offered at Wednesday's auction at the Eastern Shore Poultry Growers Exchange. Demand was only fair with the holiday influence on current business spotty.

Ready to cook demand decreased slightly. Delivered prices mostly unchanged except on extra premium quality.

The Delmarva broiler-feed ratio for the week ending May 22 was up one point at 3.0. Broilers during the week averaged 14.96 per pound and mash cost the grower \$100.29 per ton. The ratio for the comparable week a year ago was 3.4 when broilers brought 16.67 and mash cost \$99.46 per ton.

### PLAIN FABRIC

A plain fabric with subdued texture and no design is a wise choice for a basic dress, reminds Bernice Tharp, Penn State extension clothing specialist. Buy the dress in the best quality fabric you can afford and select a weight fabric that is suitable to almost any season. Desirable fabrics include lightweight wool, blends of wool and manmade fibers, and blends of manmade fibers.

Many troubles are caused by too much bone in the head and not enough in the back.

## Weekly New York Egg Mkt.

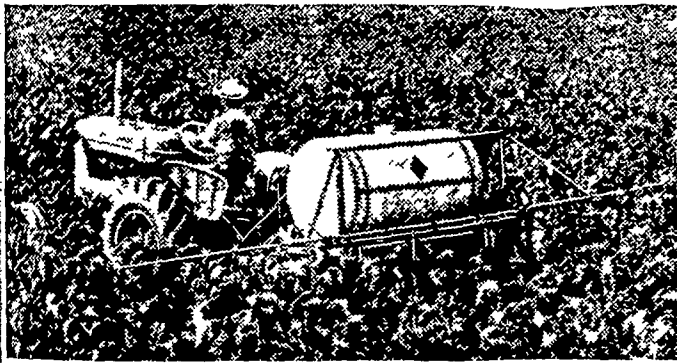
From Monday, May 25 to Thursday, May 28

	Mon.	Tues	Wed.	Thurs.
<b>WHITE</b>				
Ex.				
Fcy Hywts.	29	30	30	29¾-30
Fcy Hywts.	29	30	30	29¾-30
Fcy Med.	23	23½	23½	23
No 1 Med.	23	23½	23½	23
Pullets	18½	18½	18½-19½	18½-19
Peewees	15	15	15	15
<b>BROWN</b>				
Ex.				
Fcy Hywts.	29	29	29	29
Fcy Hywts.	29	29	29	29
Fcy Med.	23	23½	23½	23
Pullets	18½	18½	18½-19	18½-19
Peewees	15	15	15	15
<b>MIXED</b>				
Ex.				
Fcy Hywts.	29	29	29	29
No 1 Med.	23	23½	23½	23
Pullets	0	0	0	0
Standards	27½-28	28	28	28
Checks	24½	24	24	24

TREND Top grade large holding steady but medium and small easier with particular surplus of medium

Copyrighted 1963 By Urner-Barry Co.

## NEW SPRAYERS...



### WITH BIG ACREAGE DURABILITY

Here is a completely new Allis-Chalmers sprayer line, built to withstand chemical corrosion and hard service. Booms, up to 33 feet wide, are made of special resistant alloy aluminum with tough chip- and dent-proof nylon in nozzle eyelets and caps. Double nylon roller pumps are offered in two sizes. A 6-roller model develops up to 250 pounds pressure. An 8-roller model, with pressures up to 350 pounds, provides ample capacity to handle long booms and to provide agitation for wettable powder sprays. Allis-Chalmers models include the heavy-duty trailer type shown above, rear-mounted boom sprayer, a broadcast model, and a tool bar-carried unit.

See the difference that Allis-Chalmers quality now brings to spray equipment.

Finance for profit. Ask us about Allis-Chalmers time payment plans.

Get the dollar-making difference with **ALLIS-CHALMERS** SALES & SERVICE



L. H. Brubaker  
Lancaster, Pa.

Allen H. Matz  
Farm Equipment  
New Holland, Pa.

Grumelli Farm Service  
Quarryville, Pa.

L. H. Brubaker  
Lititz, Pa.

N. G. Myers & Son  
Rheems, Pa.

Nissley Farm Service  
Washington Boro, Pa.

Lausch Bros. Equipment  
Stevens, Pa.



### New Spring and Summer Dairy Feeding Program

**14 Record Fitting and Calving Feed with Pellets** is excellent for show animals, for dry and fresh cows, and for a milking ration.

**14 Hi Cal Pellets** an excellent all purpose summer feed or for feeding year round.

**14 Pro-Cal Dairy Feed** a new feed available in two forms — all pellets or partially pelleted. Ideal for a good pasture or zero grazing programs.

Ask your dealer for feeding recommendations and Prices.

LET YOUR COWS AND YOUR MILK CHECK, TELL THE STORY.



SEE YOUR DEALER TODAY



J. K. Stauffer & Son  
Lawn and Bellaire  
665-3121 — 367-2321

Clem E. Hooper  
Intercourse  
768-3431

Paradise Supply  
Paradise  
687-6292

**Robert K. Rohrer**  
Quarryville, R. D. 1  
Hensel KI 8-2559

**SPRAYING Service**  
Dairy Barns  
Poultry Houses  
**CARBOLA**  
Disinfecting White Paint  
● Dries White  
● Disinfects Against Disease  
● 90% Less Cobwebs 8 to 10 Mo.  
**Fly Spraying**  
DISINFECT  
POULTRY HOUSES  
6 Witmer Rd., R4, Lanc.  
**Maynard Beitzel**  
Phone 392-7227



Order DEKALB PULLETS  
Day Old or Up To  
Twenty Weeks Old From  
**DUTCHMAN MILLS, INC.**  
R. D. 1, STEVENS, PA.