



WESTERN SHEEP FOR LANCASTER COUNTY FARMS were unloaded from a railroad Thursday. Here Robert Harnish, Conestoga R2, looks over some of the 50 head he purchased. This is the second flock of western ewes he has purchased. L. F. Photo.

● Sheep

(Continued from Page 1)
to Franklin County
Morgan, working in cooperation with County Agent M. M. Smith, bought the 12 month old ewes on order from Keystone state shepherds

He said this week the ewes ought to be good for about seven lamb crops—two more than can be expected from native ewes. The Rambouillet breeding makes the western ewes harder than the native sheep.

"Farmers can expect two to three pounds more wool per ewe per year from these sheep," he said. The wool is somewhat finer and longer because of the Rambouillet breeding.

The sheep which came to the county are from range ewes, with basic fine-wool breeding, and Suffolk rams. They will be bred this fall to mostly medium wool rams to produce market lambs.

One of the farmers, Robert Harnish, Conestoga R2, got a consignment of 75 similar ewes six years ago. He still has about 45 of them in his breeding flock. He said they were very hardy and easy to settle. He uses a Shropshire ram and does not keep any of the lambs for breeding. He received 50 head this week.

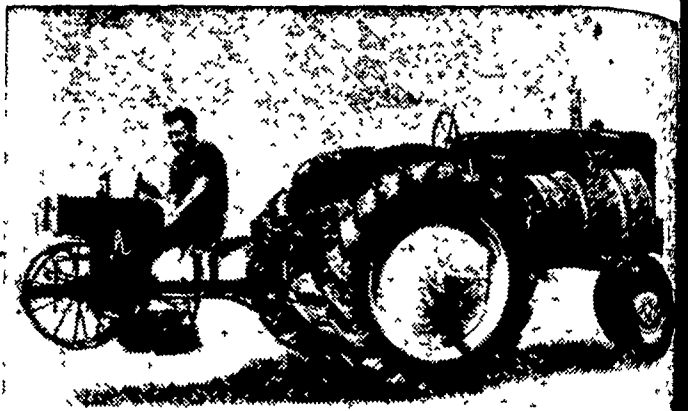
Other farmers in the area and the number they bought are as follows: William Longenecker, Mount Joy R2, 75 head; Alfred Gusler, Mount Joy, 25 head; Morris Zook, Honey Brook, 25 head; Lester Weber, Denver R2, 25 head; and Arthur J. Beitzel, York R1, 50 head.

The ewes, mostly black face or spotted about the face, averaged out to the farmers at Lancaster at \$24 per head including railroad freight charges from Texas.

Morgan said the ewes came from one flock at the feeding station. The wethers and the tail end of the ewes in the flock went to slaughter. The Pennsylvania consignment moved from Texas last Saturday and were fed and watered enroute.

Studies by The Travelers Insurance Companies show driver error and lack of judgment were responsible for 34,700 deaths and nearly 3,000,000 injuries on U. S. highways in 1963.

Lancaster Farming Ads Pay!



SEE THE GENUINE
MECHANICAL TRANSPLANTER

HORSE DRAWN OR TRACTOR MODELS

With All The Features The Farmer Wants and Buys

SOLD AND SERVICED BY

LESTER A. SINGER

RONKS, PA.

Phone Strasburg 687 6712



FARMERS!



Your Hay Is Ready...

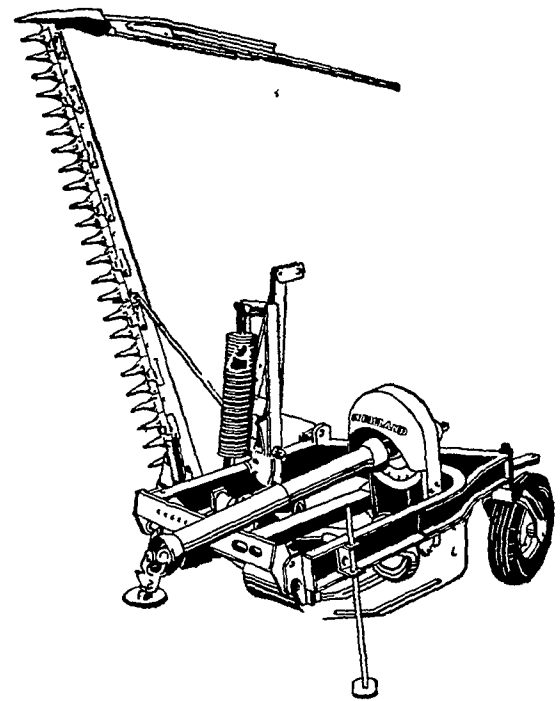
Are You Ready To Handle It?

Take The Heave Out Of Haying

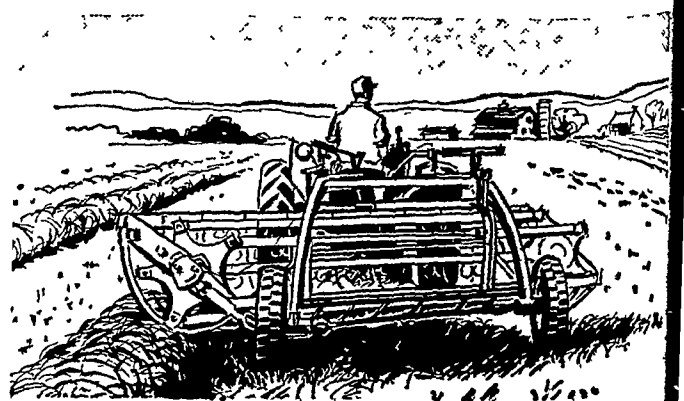


Crushing Gives Fast, Uniform Hay Curing

Mow Up To 7 Acres An Hour



Rake Gently To Save Leaves



No. 268 Baler - Only \$1670. list



See Your Local New Holland Dealer

