

Letters To The Editor

County Farmer Disagrees On Wheat Editorial

Editor: Lancaster Farming
Dear Sir,

In the Editorial, "Wheat Farmers Decision," May 2, 1964, it was implied that to participate in the 1964 Wheat program was in reality a vote for the program.

I CANNOT agree with this view. Because one goes through the necessary procedure to re-

ceive an income tax refund does that mean he is in agreement with any or all of the income tax program?

Can one AVOID paying taxes on his income BY NOT applying for the tax refund?

By NOT participating in the wheat program, can anyone AVOID the payment for wheat certificates and yet get his

wheat milled or exported for human consumption?

Can we, the farmer, change or remove the law by NOT participating in the program?

If a farmer participates in the wheat program does that REQUIRE him to VOTE for it or prevent him from speaking out against any or all parts of it?

Co. Plow Meet Is Scheduled

The third annual Lancaster County Soil Conservation Dis-

trict plowing matches will see county plow jockeys turning furrows on July 23 if weather permits. Rain date has been set for July 27.

The date was set Monday night at a district committee meeting at the Lancaster County court house.

Henry E. Givler, district secretary, said Monday night that the annual field day of agency exhibits is expected to be held at the same date and place. The site is expected to be announced before the committee's Monday, June 8 meeting, Givler said.

The plowing winner will qualify for the state contest to be held Wednesday, July 29 at Ft. McCord, Franklin County.

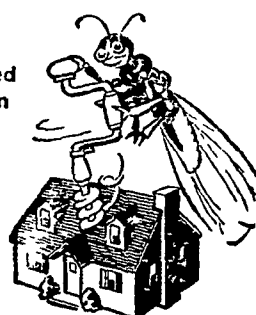
Because a dairy farmer complies with inspection requirements does that mean he is in agreement with these requirements?

My answer to all these questions is NO! Therefore I cannot agree with your views that to participate in the wheat program is a vote for it.

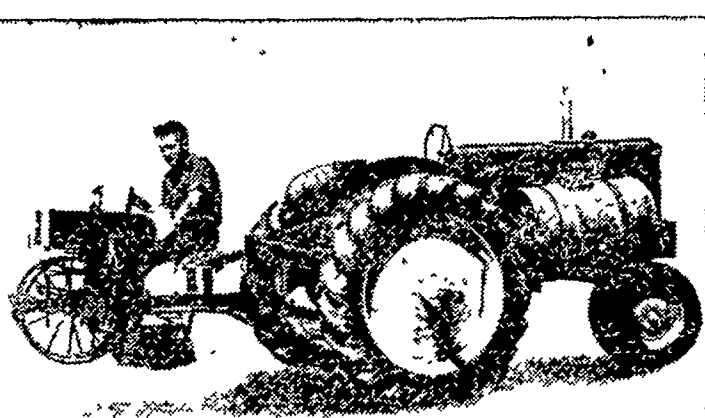
Yours truly,
Henry L. Young
Peach Bottom

STOP TERMITES FROM "BORING-IN"!

5-YR.
Guaranteed
Protection



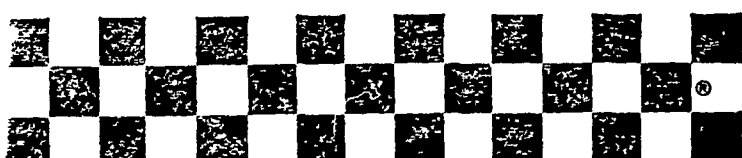
Termites are swarming... Now!
WE GET RID OF THEM!
J. G. EHRlich CO., INC.
738 E. Chestnut St., Lancaster
PHONE 397-3721



SEE THE GENUINE
MECHANICAL TRANSPLANTER
HORSE DRAWN OR TRACTOR MODELS
With All The Features The Farmer Wants and Buys
SOLD AND SERVICED BY

LESTER A. SINGER

RONKS, PA. Phone Strasburg 687-6712



Checkerboard News



Protection NOW insures Production LATER!

Purina Pura-Mycin helps protect your layers against dreaded CRD, Blue Comb and Syngonosis... diseases that can spell trouble for your egg production and profits. Easy to use! Just add Pura-Mycin to drinking water. It mixes easily and completely, holds its germ-killing power for several days, doesn't upset drinking habits.

Economical, too! Costs only about 18¢ to medicate a gallon of drinking water with Pura-Mycin.

Protect your layers by investing in Purina Pura-Mycin now. The added health protection could pay for itself many times over in continuous egg production all winter.

Ask for this Terramycin* base Health Aid at our store. Call or drop in today!



*Reg. Trademark—Chas. Pfizer & Co., Inc.

LOW COST PRODUCTION... the reason why more farmers feed PURINA

©Registered trademarks—Ralston Purina Co.

John J. Hess
Kinzers - Vintage

Warren Sickman
Pequea

John B. Kurtz
Cedar Lane

James High
Gordonville

John B. Kurtz
Ephrata

Ira B. Landis
Valley Road, Lancaster

Wenger's Feed Mill, Inc.
Rheems

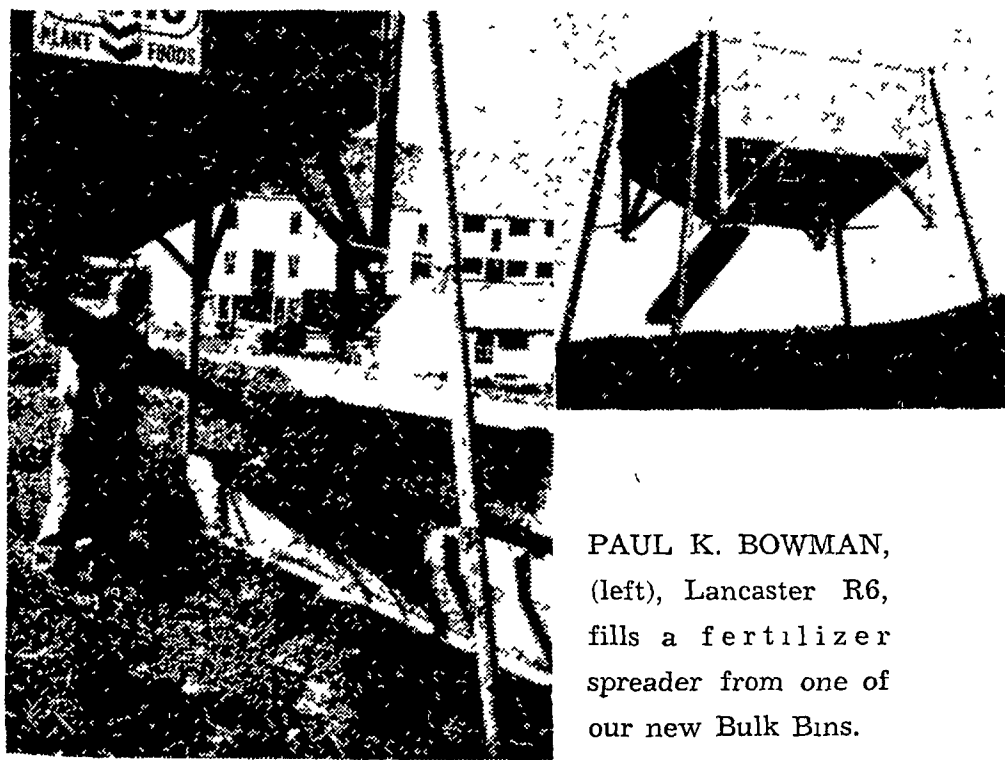
Whiteside & Weickel
Kirkwood

S. H. Hiestand & Co.
Salunga

John J. Hess, II.
Intercourse - New Providence

It's A Breeze Spreading Ortho Unipel Fertilizer From Our New Portable Bulk Bins

- Easier
- Faster
- No Bags To Store or Handle
- Lower Cost
- Time Saver



PAUL K. BOWMAN, (left), Lancaster R6, fills a fertilizer spreader from one of our new Bulk Bins.

All it takes is a phone call to us and in less than 24 hours we can place a portable bin on your farm with any of the following analyses — Ortho Unipel 20-10-10, 16-16-16, 10-20-20.

Ortho Unipel also available in bags including Starter Fertilizer 13-34-10.

T.M. Reg. U.S. Pat Off: Ortho, Unipel.

On All Chemicals Read Directions and Cautions Before Use.



P. L. ROHRER & BRO., INC.

SMOKETOWN
Ph. Lanc. 397-3539