

● Production

(Continued from Page 1)

While profitable to farmers who sold hay for cash, the situation put the economic pinch on farm producers who fed livestock their hay crops

Nine county commodities, each worth more than \$1 million, continued to rank Lancaster County the top farming community in Pennsylvania and the 13th ranking area in the United States

They were: Milk, eggs, tobacco, poultry, hay, grain and silage corn, wheat and potatoes

Barley Crop Off

The county's barley crop, which grossed farmers over \$1 million in 1962, failed to make the seventh digit last year—due largely to lower acreage and yields

Two of the county's traditional leading commodities—milk and eggs—supplied over half of the last year's total crops and livestock value

Tobacco was the hardest hit commodity. Cigar filler leaf

producers took a \$23 million cut in earnings as the agency placed the value of the 1963 crop at \$10,722,600 compared with \$13,100,000 the previous year.

Milk, heading the summary for the sixth consecutive year, showed a dollar increase of nearly a half-million dollars. Despite an eight-cent decline in the average price and a 900-head cut in the composite herd size, production ran 18 million pounds more than 1962.

Larger flocks owned by fewer poultrymen combined with somewhat better average prices to boost egg income by \$159,000

The 1963 value of major farm products in 1963 are as follows: Milk, \$25,799,000; eggs, \$19,514,000; tobacco, \$10,722,600; poultry, \$8,175,800, hay, \$7,378,000; corn, \$7,229,800, corn for silage, \$4,171,900, wheat, \$3,314,800, barley, \$938,000, peaches, \$341,200, oats, \$280,300, grass silage, \$260,900; apples, \$251,600, honey, \$27,410, sou

seed, \$18,300.

Livestock inventory on farms as of January 1, 1964 was, cattle \$34,371,000; hogs, \$942,500; sheep, \$197,200, poultry, \$6,045,000. Total inventory excluding poultry was \$35,510,700.

● Grange

(Continued from Page 1)

meeting of Fulton Grange, and officers of the Fulton Grange will fill the chairs of the Lancaster County Pomona Grange visitation meeting at Colerain Grange on May 19.

Mrs. Richard Jackson, acting lecturer, presented the following program: a vocal solo, "April Showers," by Clair Murphy, accompanied by Miss Mary Lou Wesley; two square dance numbers by Mr. and Mrs. Earle Gilbert, Jr., Mr. and Mrs. Stanley Stauffer, Jr., Misses Cathy Gilbert and Linda Schonvisky, and Clair Murphy and Ray McSparran, a game led by George Lamborn, sing-along group singing led by Clair Murphy, and a humorous reading by Miss Jesse Wood

PRODUCTION--

The production level your herd achieves depends primarily upon the quality of Sires you select.



you choose the Sires' best suited for your Herd.

SOUTHEASTERN PENNA. ARTIFICIAL BREEDING COOPERATIVE

P. O. Box 254, LANCASTER, Pa.

Ph. 569-0411

There's a calling station near you . . .

Akron 859-2552

Mount Joy 653-2411

Christiana LY 3-5187

Quarryville ST 6-7381

Manheim 626-2363

Strasburg 687-6292

Used Equipment Specials

LANCASTER STORE

- WD tractor, plow and cult.
- M.H. 101 Jr tractor
- JD "B" tractor with cult.
- Plows - 1 & 2 btm. 2 way
- Plows - 2 & 3 btm. Mtd.
- Discs - IHC 28
- Harrows - 3 & 4 Sec.
- Transplanter 1 Holland Unit
- Planters, IHC & Black Hawk
- Spreaders, N.I., Templeton, NH, etc.
- Balers, PTO and engine
- Mower, AC 80R & No. 37 ft.
- Mower, NI 6 & 7 ft.
- Mower, JD No. 5
- Forage Harv., AC & Papec
- Blower AC (hopper) & Papec
- Tillers, garden tractors & mowers

LITITZ STORE

- CA tractor, plow and cultivator
- B tractor, 2 way plow and cultivator
- Co-Op E 3 tractor, 3 pt. hitch and remote ram
- Case VAC tractor with Elec. & Hydr.
- Plows - 1, 2 & 3 bottom moldboard and disc
- Disc harrows - JD & AC 28
- Transplanter - 1 row Powell, 3 pt.
- Transplanter - 2 row Powell fast hitch
- Corn planter with fert. - 2 row M.H.
- Corn planter with fert. - 4 row J.D.
- Fertilizer spreaders - 8 & 10 ft.
- Loader - AC "WD"
- Rotary cutter - Case 3 pt.
- Spreaders - NI 12 A, etc.
- Riding mowers, Tillers, etc.
- Conditioner, JD & N.H.

When you need new or used farm equipment or appliances — stop in or call

L. H. BRUBAKER

350 Strasburg Pike, Lancaster
Lanc. 397-5179

Strasburg 687-6002

R. D. 3, Lititz
Lititz 626-7766

IF YOU PLANT CORN

YOU'LL WANT THIS

Ortho Unipel Starter Fertilizer 13-34-10



- Easy to handle in 50 lb. bags or in bulk . . .
- Proven performance . . .
- Highest available analysis . . .
- Convenient to store and use . . .
- Most uniform pellet . . .
- Uniform early response . . .
- Higher yields

Also available in bags or bulk
20-10-10, 16-16-16, 10-20-20

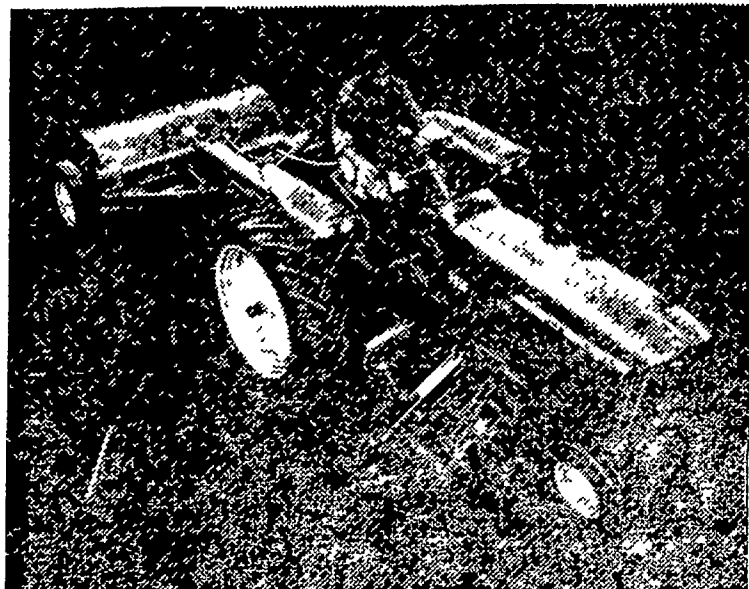
T.M. Reg U.S. Pat off Ortho and Unipel

P. L. ROHRER & BRO., INC.

SMOKETOWN

Ph. Lanc. 397-3530

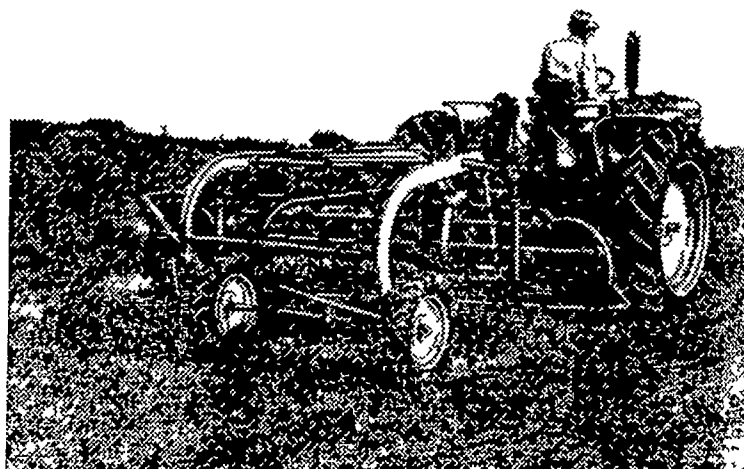
Choose From The Long Green Line Of John Deere HAY EQUIPMENT



No. 10 Side Mounted Mower and Hay Conditioner



No. 894A Rubber Tooth Rake



See Us For A Demonstration

Alan Beyer

Christiana LY 3-5687

Landis Bros. Inc.

Lancaster 393-3906

Shotzberger's

Elm 665 2141

A. B. C. Groff, Inc.
New Holland 354-8001

Wenger Implement Co.
Buck BU 4-4467

H. S. Newcomer & Son
Mt. Joy 653-3361

M. S. Yearsley & Sons
West Chester 696-2990

