

## FOOD BUYS Chicken, Beef Supplies Abundant

Shoppers will find many choices yet to come. There will be more beef, pork and poultry values in some stores as retailers try to attract new shoppers and give regular customers something different.

Beef supplies abundant. The U.S. Department of Agriculture announced last week that special efforts will be needed to move the large supplies of feeder-cattle now coming to market. This means that beef prices will continue to get feature

treatment. It's obvious that this is happening as you check over food ads and store specials this week.

### Chicken Better Buy

Poultry joins beef as a menu-maker this week. Heavier hatchings this winter are resulting in 4 per cent more spring chickens than a year ago. Many area stores are offering foyes at lower than regular prices. If you are looking for something different for Sunday dinner you may want to try a roasting chicken. Some stores will have feature prices on these heavier weight birds.

### Springtime Foods

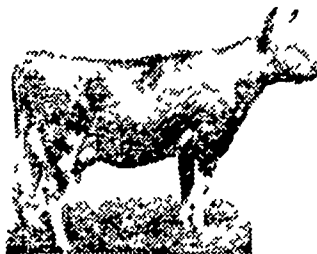
Why limit enjoyment of springtime to the outdoors? Put springtime on your table with foods that are typical of spring. Use greens to brighten up the color scheme. There's kale, collard, cabbage, mustard greens, dandelion greens, escarole and endive. For a real springtime treat, try fresh tender asparagus. Select plump, crisp stalks with tips that are compact and a purplish green color.

In the dessert line, don't overlook fresh pineapple. This is the time of year when they are most plentiful. When ripe, the leaves should pull out easily. Give your meals a lift with springtime foods.

### New Product

Powdered grapefruit juice is ready for market testing to see if consumers like it, reports the U.S. Department of Agriculture. The experimental powder, with a remarkably fresh juice flavor, dissolves in cold water with just a couple of stirs. It will probably need little or no refrigeration, making it attractive for export. Department scientists and the Florida Citrus Commission developed the new product. With a little more research and taste approval of the test consumers, the product may be ready for wide consumer use.

## Martin's Limestone



Calcium and Magnesium are lost to the soil by leaching (a slow leaking away), and by removal of crops (such as hay and other greens). These need to be replaced by the application of limestone.

Ivan M. Martin Inc.,  
BLUE BALL, PA.

Terre Hill 445-3155  
New Holland 351-2112  
Gap Hickory 2-4148

## PROFIT WITH Ortho Unipel Fertilizer

The unique Ortho Manufacturing process gives you two different forms of nitrogen and phosphate — fast acting and long lasting.

Available in the following analysis 16-16-16, 20-10, 10-20-20, 13-34-10.

Available in bags and bulk.



CONTACT US FOR MORE INFORMATION

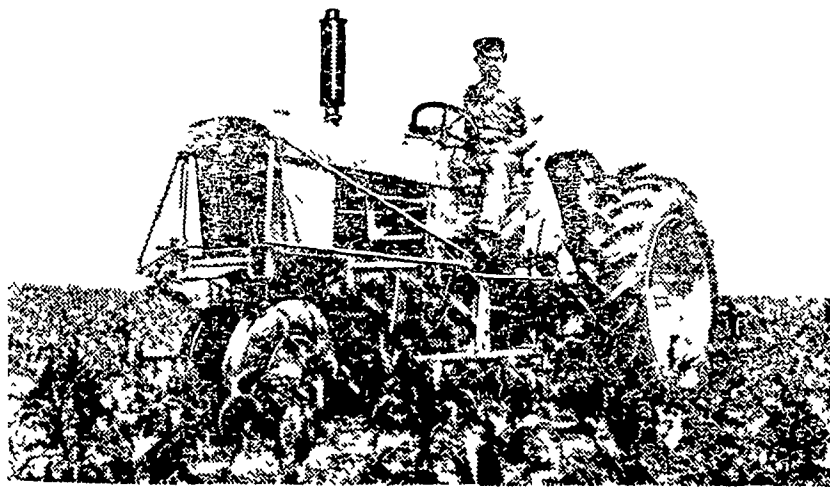
T.M. Reg. U.S. Pat. off. Ortho and Unipel

**P. L. ROHRER & BRO., INC.**

MARKET TOWN

Ph. Lanc. 397-3539

Up to 45 versatile h.p.  
*Does all jobs right!*  
JOHN DEERE 2010 ROW-CROP



Variable-powered for tough tillage with extra thrift on light loads! This "2010" puts new speed and efficiency into every job with its wide working range. It hustles a 3-bottom plow to big daily output... speeds through light work with part-throttle economy... handles drawn, 3-point, 540 or 1000 rpm PTO tools, mounted cotton and corn pickers, 2- and 4-row cultivators. You'll work in comfort with power steering and armchair seat. We'll demonstrate. Have Credit Plan.

See Us For A Demonstration

Alan Beyer  
Christiana LY 3-5687

Wenger Implement Co.  
Buck BU 4-4467

A. B. C. Groff, Inc.  
New Holland 834-8001

H. S. Newcomer & Son  
Mt. Joy 653-3361

Landis Bros. Inc.  
Lancaster 393-3908

Shotzberger's  
Elm 665-2141

M. S. Yearsley & Sons  
West Chester 696-2880



## KILL SOIL INSECTS

with

## HEPTACHLOR

and get

## MORE CORN

Spray corn fields with Heptachlor

before planting for wire worm and cut worm control as well as many other insects. Control for 3 years.

For reasonable prices and application

contact any of the following

PAUL S. BEILER  
formerly Melvin Lapp  
Paradise R1, Pa. Box 262 B  
Ph. 442-4017

BENJ. B. LANDIS  
Paradise R1, Pa. Box 254  
Ph. 687 6535

RICHARD R. FERRY  
2016 Horse Shoe Road  
Lancaster, Pa.  
Ph. 397-0035

CHESTER B. NOLT  
12 Graybill Rd.  
Bareville, Pa.  
Ph. 656-3241

K. H. HABECKER  
2578 Spring Valley Rd.  
Lancaster, Pa.  
Ph. 393-4187

ALVIN F. SMOKER  
Intercourse, Pa.  
Ph. 768-8416

HAROLD B. ZOOK  
220 Lampeter Rd.  
Lancaster, Pa.  
Ph. 394-5412