

Market News Reports

At Lancaster Yards

Weekly Review

Friday, April 3

CATTLE: 4100 Compared with 2363 head last week. Starting this week on Wednesday, the Lancaster Union Livestock Auction market will be operating, sales at the auction will be confined to Cattle Division only.

Supply includes 75 percent slaughter steers and 20 percent feeder steers. Trading slow. Compared with last weeks close, Slaughter steers weighing under 1150 lbs and grading Choice steady, all others 50 lower. Cows steady to strong. Bulls 25 to mostly 50 lower.

Feeder steers unevenly steady to 1 00 lower.

Slaughter steers: Choice 950-1350 lbs. 21 60-23.00, Loads and lots 1085-1107 lbs. 23.75, Load Prime 1333-1368 lbs. 23.50, 2 lots 1085-1170 lbs. 23.75, Load Choice 1402 lbs. 22.00, Several loads Mixed Good and Choice 21 50-22.25, Good 20.00-21 50, Standard 19 00-20 00, few Utility 17.50-19.00.

Heifers: Several lots and loads 800-950 lbs. grading Good and Choice 20.00-21 00, two lots Choice 945-968 lbs. 21.35-21.60.

Cows Cutter and Utility 14 75-15 50, Canner and low Cutter 13 75-15 00, Shelly canner (Continued on Page 3)

Vintage Sale

Tuesday, March 31

CATTLE: 526. Supply includes 35 per cent cows. Compared with last Tuesday's market, Slaughter cows steady to 25 lower. Slaughter bulls weak.

Several High Choice and Prime 1000-1220 lbs. slaughter steers 23.00-23.85, Choice 950-1300 lbs. 21.75-22.85, Good to Low Choice 20 50-22.00, Standard 19.00-20.50. Cutter and Utility slaughter cows 14 50-15.35, Canner and Low Cutter 13.75-14.75, Shells down to 12.00. Utility and Commercial slaughter bulls 19 00-21 00.

CALVES: 280 Vealers steady. Choice and Prime vealers 34 00-37.50, Good 29 00-33 00, Standard 26 00-29 00, Utility 22.00-26 00, Culls down to 17 00.

HOGS: 118. Barrows and gilts steady US No 1-2, 193-228 lbs. barrows and gilts 15-50-16 25, two Lots No 1, 215-218 lbs 16 50-17 50, No 2-3, 230-234 lbs. 15 25-15 60 US No 1-2, 315-385 lbs sows 13 00-14 35.

SHEEP: 6 Not enough on sale to establish a market.

A total of 188 hogs sold at the March 28 auction. Hogs weighing 130-180 pounds brought 13 25-15, 180-200 lbs. 15 25-15 60; 200-220 pounds 15-35-16 25, 220-240 pounds 15-15-50; 240 pounds up 13 75-15. Sows brought 11 35-13 25.

Market News Reports

New Holland Auction

Thursday, April 2

CATTLE: 712. Supply includes 29 percent cows. Compared with last Thursday's market, slaughter steers steady. Cows steady to 25, spots 50 higher. Bulls steady.

Choice 950-1300 lbs. slaughter steers 21.75-23.10, Several 1300-1375 lbs. 21.00-21.75, Good to low Choice 20.00-21.75, Standard 19 00-20.00.

Utility and Standard Heifers 16 00-19.00.

Cows: Cutter and Utility 14.75-16.25, Several to 16.50. Canner and low Cutter 13.00-15.00, Shelly canner down to 12.00.

Bulls: Utility and Commercial 19.00-21 60.

CALVES: 319. Vealers steady to weak. Choice grade vealers 36 00-37 50, Good 31 00-36 00, Standard 26 50-31 50, Utility 23 00-27 00, Cull down to 17 00.

The 164 cows, 13 bulls and 15 heifers at the April 1 auction of dairy cattle met a steady market.

Fresh Holstein cows brought \$275-475; Guernseys \$150-225, and other breeds \$150-250. Stock bulls were \$125 to \$240, and stock heifers brought \$65-160.

At the March 30 auction of horses, the 256 head brought steady prices. Riding horses \$125-350, driving horses \$125-215, and killer horses 6 to 6½ cents a pound. Pony mares

were \$35-90 and geldings \$110.

The 475 hogs at the March 30 auction sold at steady prices. Retail hogs to local butchers were 16.50-17.50. Grades 1 to 3 to the packers brought 15 75 to 16.25. Heavyweight hogs were 14.50-15.50.

Vealers met a 1.00 lower market as 89 head sold on the March 30 auction. Choice and prime vealers were 84-88, and low choice 30.34 standard 26-30, and cull and common 24.

Chicago Cattle

WEEKLY REVIEW

CATTLE: — Receipts for the four days 23,600 compared with 24,100 last week and 22,000 a year ago.

Compared last Friday, slaughter steers 25 lower, instances 50c off, slaughter heifers mostly 25 lower, cows strong to 25 higher; bulls steady. Trading on slaughter steers and heifers was slow throughout the week even though local four day supply was the second smallest for any comparable period since last September.

Slaughter steers: Bulk High Choice and Prime 1100-1350 lbs. 22 00 to 22.75, including (Continued on Page 3)



Increase yield by 20 bushels!

A lot of guff! That's what most farmers call these big yield claims. And we agree. There's a lot more to big yields than planting Super-Cob 38! Your soil, fertilizer, and a lot of luck from the weather are important... eh?

So at P-A-G we say this: 'We believe that if you plant P-A-G seed corn you have a better chance of increasing yields, a better chance for complete harvest, a better chance for matching your crop to its end use.'

Here's why—P-A-G offers over 40 research-proved, performance-tested varieties of Special Cross and Four-Way Cross seed. Each with a combination of special characteristics so you can match seed... to need... to conditions. We won't say you'll get bigger yields. We'd rather you'd be surprised and amazed.

SEE YOUR NO-GUFF P-A-G DEALER

LLOYD E. LEFEVER
Christiana

MOUNTVILLE FEED SERVICE
Columbia

WALTER B. MARTIN
Drumore

MELVIN M. BRENDLE
East Earl

FRANKLIN N. GRAYBILL
Hershey

EUGENE SPOTTS
Honey Brook

HARRY J. DAUGHERTY
Kirkwood

RAY D. DEITER
1259 Lime Valley Rd.
Lancaster

DAVID B. KING
Lancaster

CLOYD WENGER
Lancaster

CHARLES RANCK
71 Rose Avenue, Leola

J. H. REITZ & SON, INC.
Lititz

J. FRANKLIN BECKER
Manheim

PAUL G. NOLT
Manheim

WILLIS H. WEAVER
Mount Joy

ELI O. NOLT
New Holland

L. J. DENLINGER
Paradise

POWL FEED SERVICE
Peach Bottom

FRED FREY
Quarryville

STANLEY P. HERR
Rheems



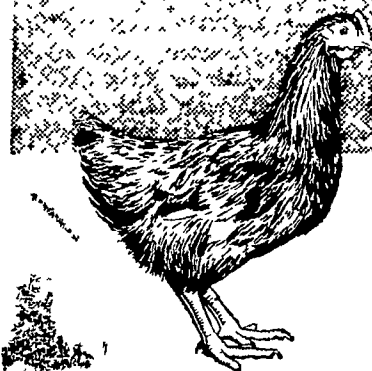
THE MOST FAMOUS NAME IN CORN
Pfister Associated Growers, Inc.

General Offices, Aurora, Illinois

GRO-BITS

Available Only From Eastern States

Top Growing Ration
for Sturdy Pullets



Eastern States' GRO-BITS — today's pullet feed for developing tomorrow's profit-making layers. Why? GRO-BITS with Feed Additive Extras, provides the complete

nutrient requirements needed during this vital period of physiological turmoil. These are the birds with "staying power" for heavy production of eggs which find a ready market. For highest earnings per layer in the future, GRO-BITS is the feed for your pullets today! Buy GRO-BITS from . . .

Eastern States

FARMERS' EXCHANGE



A farmer-owned cooperative • Headquarters: West Springfield, Massachusetts