

Soil Conservation

(continued from page 12)
 The state, he added, will pay local municipality in lieu of assessment on any land taken for parks until the assessment recovers.
 As an example he cited the area near Pittsburgh which the state appropriated at a cost of \$7 million. Within a few years, the park drew so many recreation facilities and hotel accommodations that the assessment rose by more than \$40 million.
 He predicted that the state would use three times as much land for urban growth in the next 50 years as has been used in the past 150 years.
 He said he believes the purchase of conservation ease-

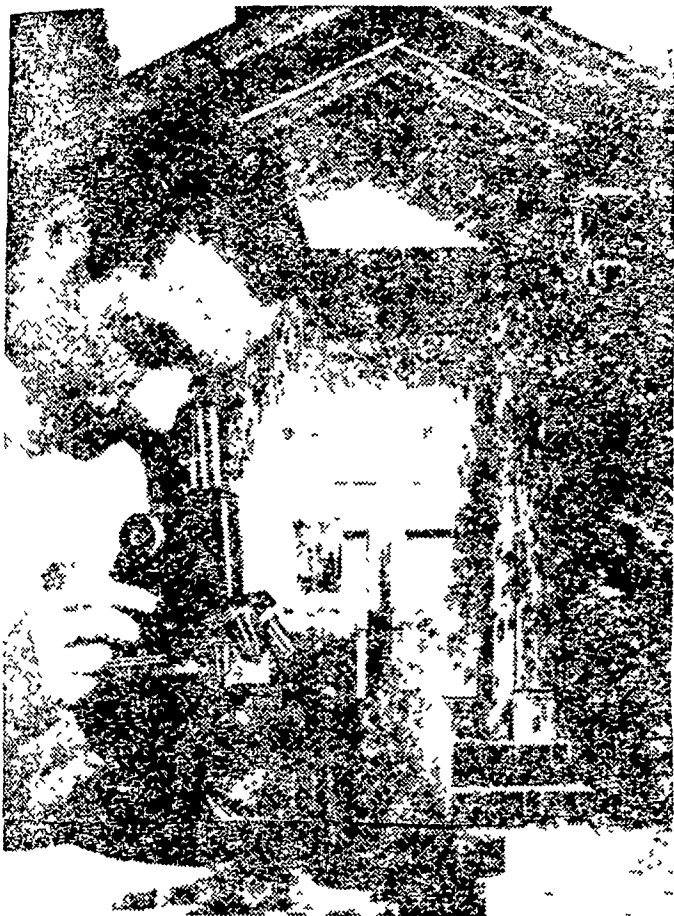
ments must increase at a rapid pace or soon it will be too late and too expensive to provide any open space near cities.

In other activity, the Soil Conservation District Directors presented a humorous skit showing the three major objections farmers offer to soil conservation programs.

Elmer Sensenig played the part of a farmer who believes conservation practices will work, but does not believe he needs them on his farm. He tried to convince Henry Hackman, who played the part of the farmer who saw the problem, but did not believe the practices would help. Elmer Good portrayed the farmer who believed the program would help him but objected to signing the agreement. They were



PRESENTING THE OUTSTANDING Conservation Farmer award for 1964 is County Commissioner Arthur R. Campbell, Jr., left. Accepting the top award of the Lancaster County Soil Conservation District at the annual banquet is Foinney F. Longenecker, center, while Penna. Secretary of Forests and Waters, Maurice K. Goddard, wants to offer congratulations. L. F. Photo.



Dairy feeds research and development right on your doorstep?

When you buy Pioneer dairy feeds from Joseph M. Good & Son, that's exactly the kind of service you get . . . an R&D department that's constantly working to find new ways to help you make more profit. And this is just one of the many exclusive services you can expect when you use Pioneer . . . the feeds with balanced amino acids for better protein building. Amino acids are the building blocks for all proteins. Balance them and you get top production at top profits. To take advantage of Pioneer's feeds, services, systems and ideas, stop in to see us today. Or call . . .



. . . the feeds with balanced amino acids for better protein building

Joseph M. Good & Son
 Leola

FARM LOANS

Loans for Machinery, Livestock, Cars, Repairs, and any farm purpose.
 10 - 35 year Farm Mortgages
 Full and part-time farms eligible

FARM CREDIT OFFICE

411 W. Roseville Rd.
 Lanc. 393-3921

convinced that they should work together by Amos Funk, Chairman, and Larry Corson, Soil Conservationist. Soil Conservation District Commissioner member, Arthur R. Campbell, Jr., presented certificates of commendation to Abner Houseknecht, Millersville, Soil Conservation Technician, Steve Mace, Mount Gretna, Land Manager with the Penna. Game Commission, Richard Hoover, Supervisor of the Lancaster office of the Farmers Home Administration, Dr. Robert Foid, Head of the Geography Department of the Millersville State College, and

C. Buckley Foster, Director of the Lancaster County Planning Commission.

A special award was presented to W. Martin Muth, retiring Work Unit Conservationist with the U. S. Soil Conservation Service. Muth came to the county soil conservation office in 1935 and is directly or indirectly responsible for most of the conservation plans now in operation in the county, Campbell said.

Foinney F. Longenecker won the district's plaque for "Outstanding Conservation Farmer", 1964.

Henry Givler, District Secretary-treasurer, gave the annual report.

OLIVER 1600

New Power with All-Around Balance



The new 4-5 plow Oliver with a record-breaking performance heritage

- ★ Field-balanced types: Row Crop, Row Crop Utility, Wheatland and Ricefield.
- ★ Weight-balanced design to provide better traction—over 3 tons of "live," basic weight.
- ★ Step-balanced transmission. 12 speeds forward with Hydra-Power Drive.*
- ★ Power-balanced engine. Smooth, 6-cylinder types in gasoline, diesel and LP-gas.
- ★ Comfort-balanced platform. 2-position, telescopic power steering*, rubber spring seat.
- ★ Load-balanced hitch. 3-point hitch with draft-sensitive lower links. *Special equipment

See the all-new Oliver 1600 and see all that's new in farm power

N. G. Hershey & Son
 Manheim

Farmersville
 Equipment Co.
 Ephrata, R. D. 2

Chas. J. McComsey
 & Sons
 Hickory Hill, Pa.

PATZ

Sales & Service

Barn Cleaners - Silo Unloaders - Cattle Feeders

Robert K. Rohrer

Quarryville, R. D. 1
 Hensel KI 8-2559



Neighborly service!

Folks like our neighborly service. Our customers are our friends! We'd like to add your name to our list of satisfied users of clean-burning Texaco Fuel Chief Heating Oil.

We Give S & H Green Stamps
GARBER OIL CO.

Distributor
 Texaco Fuel Chief Heating Oil
MOUNT JOY, PA.
 Ph. 653-2021
 105 Fairview St.
