

1963 District Financial Report

| Expenditures | |
|---------------------------------------------------------------------------------------|-----------|
| Dues | |
| a) State Association | \$ 45 00 |
| b) National Association | 100 00 |
| Clerical, stationery and telephone | 161 92 |
| Awards and contests | 103 62 |
| Soil Stewardship Week | 30 00 |
| Dinners and meetings annual meeting | 529 17 |
| Exhibits | 33 84 |
| Treasurer's bond (required by law) | 10 00 |
| Miscellaneous (C V A Silt Station) | 250 00 |
| Total Expenditures | \$1263 55 |
| Balance | 120 88 |
| Bonds | 2000 00 |
| Balance | \$3384 43 |
| Income | |
| Balance on hand at beginning of year (including bonds and \$2000 Bonds bank accounts) | \$2098 93 |
| County Commissioners \$250 for C V A. | 750 00 |
| Interest on bonds and accounts | 41 00 |
| Other (Annual Meeting and S S Lit refund) | 494 50 |
| Total Income | \$3384 43 |

● **S.C.S. Report** (Continued from Page 1)
 ACP referrals read — 63.
 ACP referrals serviced — 60.

Bedding — 12 acres.
 Conservation cropping systems — 3324 acres.
 Contour farming — 3122 acres.



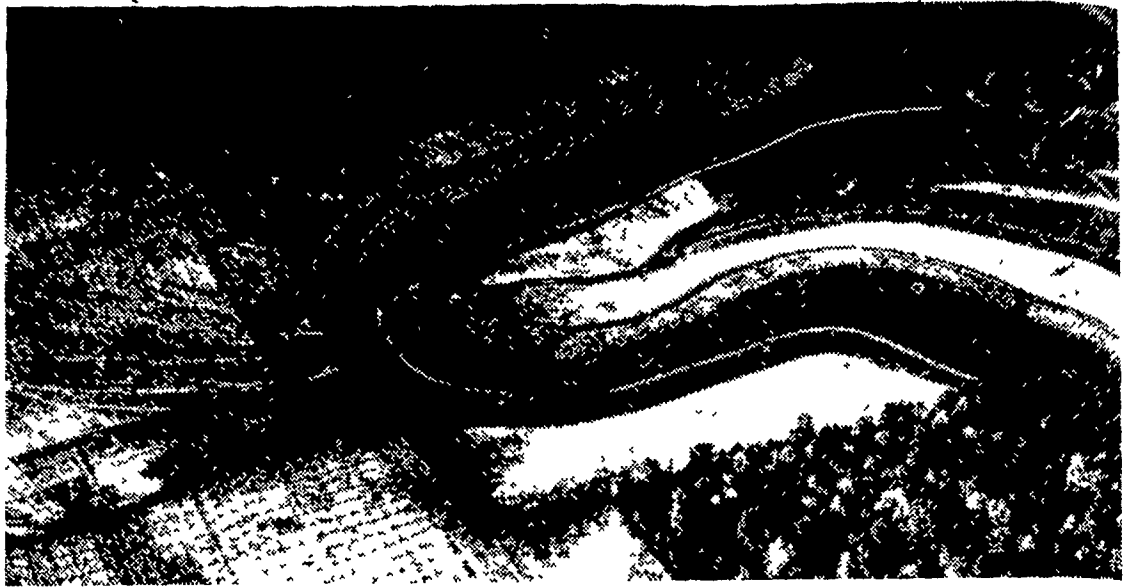
WOODLAND BORDERS between fields and woods provides shelter and food for many kinds of wildlife. The Game Commission cooperates with the Soil Conservationists in providing materials for planting and in laying out the plantings.



FARM PONDS like this one near Lititz provide beauty as well as service. Fire protection, water supply for livestock and irrigation, are provided by this pond. It also provides recreation such as swimming, boating and fishing. The fish commission provides assistance in deciding what fish are best for stocking in particular ponds.



A **NATURAL DAM** in this gutter was formed by the sod. Water flowing down the waterway takes soil with it if the soil is not held in place by some kind of cover. Grass waterways are one of the major tools of the conservationist.



HOW CAN THIS KIND OF EVIDENCE be ignored? Gutters in the unprotected land (upper left) almost disappear on the contour strips. While the large fields do have to give way to strips, many rows become longer and farming on the level saves wear and tear on machinery and men.

Cover & Green Manure Crops — 1063 acres.
 Crop Residue Use — 2254 acres
 Cutback borders — 7635 feet.
 Diversions — 10,513 feet.
 Ponds — 1.
 Fish Pond Stocking — 5.
 Grassed Waterways — 77 acres
 Land Clearing — 25 acres.
 Obstruction Removal — 12.6 acres.
 Pasture and Hayland Renovation — 25 acres.
 Pasture and Hayland Planting — 275 acres.
 Rotation Grazing — 15 acres
 Contour Strip Cropping — 3116 acres.
 Field Strip Cropping — 27 acres
 Drainage Field Ditches — 2350 feet
 Tile Drains — 10653 feet.
 Tile System Structures — 16.
 Tree Planting — 12 acres.
 Wildlife Habitat Development — 3 acres.
 Woodland Harvest Cutting — 10 acres.
 Plow Planting — 14 acres.
 Grasses and Legumes in Rotation — 93 acres
 Woodland Pruning — 100 acres
 Structures For Water Control — 1
 Land owners and operators applying one or more income-producing recreation enterprises — 1



WATER FLOWS SLOWLY in a terrace which is nearly on the level. Slow-moving water has much less soil carrying capacity than rushing water has. Many soil saving practices such as this can be partially financed by the U.S. Agricultural Stabilization and Conservation Service. Martin Muth, Work Unit Conservationist inspects the finished job.

W Martin Muth, Work Unit Conservationist.
 Larry R Corson, Soil Conservationist
 Abner S Houseknecht, Conservation Technician
 Richard A Shipman, Conservation Aid.

● **Soil Conservation** (Continued from Page 1)
 used in school, service clubs etc
 16 An Associate Directors meeting was held. Farmer Co-operators in the County now total 2,162
 17 There were 57 new Co-operators signed during the year with acreage totaling 4-258 acres
 18 Held 12 regular monthly meetings. Directors attendance was 87.5%.
 19 The District in conjunction with Millersville State College constructed a model conservation farm.

Forester Makes Annual Report

The year of 1963 was a busy one for the Foresters, a year when we needed to protect our woodland more than any other conservation practice. The job done by our Forest Fire Wardens in keeping the 13 forest fires in Lancaster County to 281 acres has been remarkable. (Continued on Page 11)

Here's POSITIVE MINERAL PROTECTION
 for your dairy herds, steers, dairy heifers, sheep, goats and hogs



Phosphorus . . . Copper . . . Cobalt . . . Calcium . . . Manganese . . . Iron . . . Zinc . . . Iodine . . . Salt . . . are included in RED ROSE FREE-CHOICE MINERAL to provide farm animals a complete range of supplementary minerals (in balanced amounts) they need for good health, growth and performance.

Insist on RED ROSE

FREE-CHOICE MINERAL when you buy

A. S. Groff

North Queen Street
 Lancaster, Pa.

Mountville Feed Service

R. D. 2, Columbia, Pa.

Ammon E. Shelly

R. D. 2, Lititz, Pa.

West Willow Farmers Association

West Willow, Pa.

Brown & Rea

Atglen, Pa.