

Have You Heard?

(Continued from Page 9)

Choosing A Hairbrush
A brush with short, stiff bristles is best for stimulating the scalp, but a brush with soft bristles is good for polishing highlights into your hair.

A brush should have good "bend recovery." Before buying a brush, press hard on the bristles to see whether they spring back quickly. Bristles that don't have this kind of spring will soon become matted and useless.

Apply light pressure with the palm of your hand to check the bristle ends. If they feel too prickly, it means the brush can break delicate or color-treated hair and may injure a tender scalp.

Some brushes have both natural and nylon bristles for durability and gentle brushing power. Natural bristles absorb

oil and hair oils readily and can be damaged by hair oils. In general, nylon bristles can take more hard use and are easily cleaned.

Once you find the right brush, get two, so there's always a clean one handy.

Farm Women 3 Vote Donations

Mrs. Frank Snyder and her daughter Miss Nancy Snyder were hostesses to Farm Women Society 3 last Saturday afternoon in their home in Akron.

The scripture lesson was read by Miss Snyder and followed by a memorial service conducted by Mrs. Gilbert Paul, in memory of Mrs. David Zartman who passed away after being injured in an automobile accident near Dikön, S. C., while she and her hus-

band were enroute to their winter home in Florida.

"Calendar Through The Year in Gift Wrapping" was the theme of a demonstration and talk given by Mrs. Martin Swarr, Landisville. She demonstrated how materials can be used to design lovely gift wrappings and showed finished packages with designs for each month.

Members voted donations of \$50 to Ephrata Recreation Center, and \$15 to Heart Haven. It was reported that 116 cancer pads and one "Johnny coat" were delivered to the Cancer Society.

The group will entertain their husbands at a hockey game at Hershey on February 29.

On March 20 at 7:30 p.m. the group will have a "Bonny Hop" in the Mt. Airy fire hall.

Protect House Plants


Keep house plants away from radiators, but guard against freezing during cold nights in the home. It's available especially where such plants are placed close to windows. agents

Extension circular 491, "Growing Better House Plants,"

has useful tips on growing plants in the home. It's available from county agricultural agents

IT'S A FACT!

A LAYING HEN DEPRIVED OF CALCIUM IN ITS DIET PRODUCES A THINNER SHELLED EGG THE SECOND DAY. TO MAINTAIN GOOD EGG SHELL QUALITY, HIGH PRODUCING LAYERS MUST RECEIVE SUFFICIENT CALCIUM.



Red Rose LAYING FEEDS AND LAYING FEED SUPPLEMENTS PROVIDE A DEPENDABLE SOURCE OF CALCIUM, WITH ADDITIONAL MANGANESE AND ZINC FOR CONSISTENT STRONG EGG SHELL FORMATION.

A. S. Groff
North Queen Street
Lancaster, Pa.

Mountville Feed Service
R. D. 2, Columbia, Pa.

West Willow Farmers Association
West Willow, Pa.

Ammon E. Shelly
R. D. 2, Lititz, Pa.

Brown & Rea
Atglen, Pa.





HEY THERE PARTNERS!

IT'S BARGAIN ROUND-UP TIME!

LOWEST PRICES OF THE SEASON!

BIG TRADE-IN ALLOWANCES!

DEMONSTRATIONS

SALES

AND OPEN HOUSE
LASTS FROM
MARCH 2 to MARCH 6

REFRESHMENTS — DOOR PRIZES

Friday Evening — March 6 — Free Movies — 7 to 9 P.M.

Grand Door Prize Drawing Friday Evening

WESTINGHOUSE ELECTRIC CLOTHES DRYER

SPECIAL Pre-Sale BARGAIN NEW INTERNATIONAL

606 TRACTOR (Demonstrator)

FULL YEAR WARRANTY

WAS \$4697.00 **NOW \$3995.00**

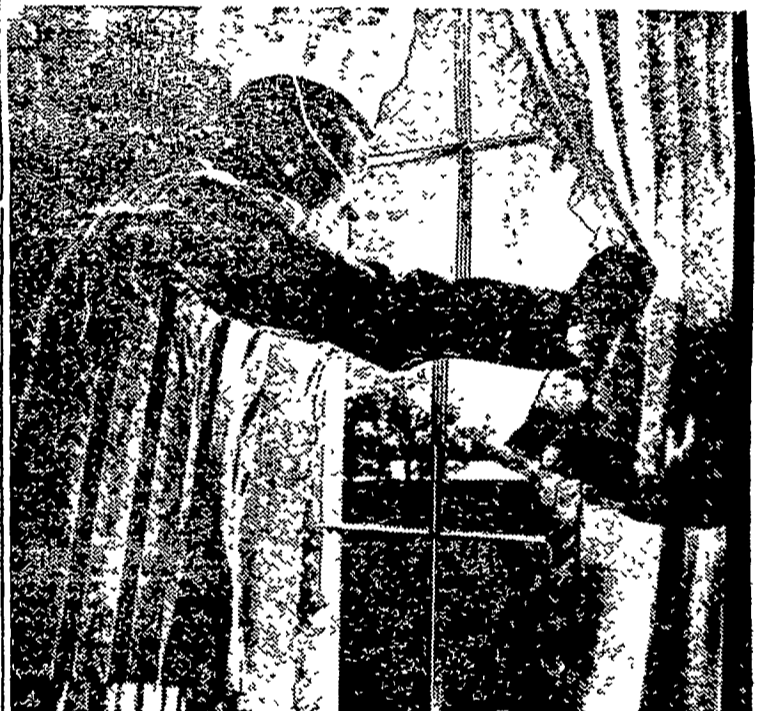
SAVE \$702.00



COPE & WEAVER

New Providence, Pa.

Phone ST 6-7351



Be ready to go when the weather's right...

Let us put your tractor in top working condition now

When you roll out of bed that certain spring morning, and the weather's finally right for a real day's work... will your tractor be fully up to it?

You can be sure by letting us take care of necessary service work now. Our John Deere-trained staff will do the best possible job, at reasonable cost. Make a service date with us soon. You'll like our work.

Alan Beyer
Christiana LY 3-5687

Wenger Implement Co.
Buck BU 4-4467

A. B. C. Groff, Inc.
New Holland 354-8001

H. S. Newcomer & Son
Mt. Joy 653-3361

Landis Bros. Inc.
Lancaster 398-3906

Shotzberger's
Elm 605-2141



M. S. Yearsley & Sons
West Chester 696-2990