

Manor FFA Seniors Plan Summer Trip

By Carson Kauffman and Lehman Metzler

The senior boys in the Penn Manor High School vocational agriculture department are planning a vacation for the summer of 1964.

The vacation will be financed by proceeds from two group projects by the senior boys, in which they had the aid and support of about nine of the members.

The projects consisted of one acre of tomatoes and one acre of tobacco. The tomato project was raised on the farm of Harold Heishev, Holtwood R1 and the tobacco was raised on the halves on the farm

of Raymond Mylin, Willow Street R1, father of Jay Mylin, one of the FFA members.

Those involved in the project were Elmer Stoltzfus, Jay Mylin, Robert Martin, Allen Heishev, Carson Kauffman, Bob Havelstick, Roger Weaver, Wilmer Shertzer, and Lehman Metzler. Each of the boys kept a record of his time on one or both of the projects.

The crops were planted, cared for and harvested at the proper times. Records were kept of fertilization which was applied by soil test recommendations. Records were also kept on all other production and marketing costs.

The members who supported the group projects feel their efforts were well worthwhile when they consider the good times and relaxation which will come from their trip to Western United States.

E'town FFA Calf Ring Is Continuing

By: Nevin Hiestand, Reporter

Nearly four years ago the Elizabethtown FFA chapter started a calf chain. Since it is against our school policy to sell items to make money, we decided to make personal contacts with businessmen in our community. After explaining our project, the response was so great that \$500 and two purebred Holstein calves were donated to the chapter.

The chain works in this manner. The boy who wins a calf is required to give back to the chapter the first heifer born to her. If a heifer calf is not born in the first three freshenings, the owner must buy a calf of equal quality and return it to the chapter to be awarded to another member.

To win a calf, the contestant must write a complete plan for raising a calf until freshening, his plans for the future, and a budget estimate.

Three local teachers of vocational agriculture judge the applications. The contestant must also take a written test and answer any questions the judges ask in a personal interview.

After this, members of the calf-chain committee, which is made up of previous calf win-

ners, go to each contestant's farm and inspect the environment in which the calf would be raised.

The contest is held every February, and if no heifer calf is born during that calendar year, the winner must try again next year. If two or three heifer calves are born during the year, not only the high scorer wins a calf, but the second and third high scorer also win calves.

Two boys have already returned their heifers to the chapter. They are Kenneth Myer and Gary Kreiner. The winners of these two calves last year were Donald Patches and Dennis Patches. Three other boys, Willis Hackman, Ed Shoop, and Irwin Engle still have heifers to return.

Manheim FFA Sweetheart Is Elected

By: James Gelman, reporter

Miss Sandy Bricker, a Senior at Manheim Central High School was elected Chapter Sweetheart at a recent meeting of the Manheim Future Farmers of America.

In other business a committee was appointed to purchase maroon and grey jerseys for the FFA basketball team which recently defeated Penn Manor FFA by a score of 43 to 27.

A committee was appointed to purchase a new pickup truck which the seniors will use on their summer trip to the west coast.

The chapter has sold its seven acre tobacco crop for 23 and 18 and is now strapping it. They are also conducting a seed sales campaign of Eastern States Garden seeds and Farm Bureau farm seeds.

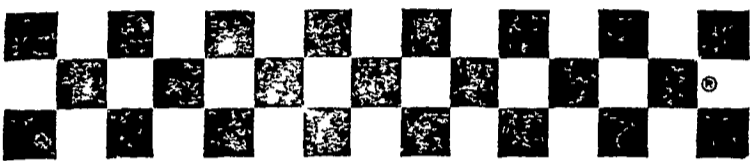
Local Man Wins A Trip

John G. Rineer of Lampeter will be among approximately 3,000 John Deere Dealership personnel to be honored during visits to company facilities at Waterloo and Dubuque, Iowa and Moline, Illinois.

Rineer, who is associated with Landis Bros., Inc., of Lancaster, Pa., was chosen for recognition as a result of his contribution to the outstanding

tractor sales record made by the local firm during the past year.

Rineer is scheduled to make the trip, called "Flite 63," February 12 to 15. He and his wife will tour John Deere factories in the three locations.



Checkerboard News



Low feed cost per dozen

HELPS POULTRY PROFITS

Making money with layers is not as easy as it used to be.

But many thousands of poultry farmers are making money with Purina high-efficiency Laying Chows. There's a reason.

Purina high-efficiency Chows are developed at the Purina Research Farm to deliver more egg-producing calories . . . more minerals . . . more vitamins . . . better protein balance . . . than you get in less efficient laying rations.

So thousands of customers find they get more eggs on less feed and at lower feed cost per dozen.

Feed Purina and see for yourself. Get it at the Store with the Checkerboard sign.

LOW COST PRODUCTION...

the reason why more farmers feed PURINA®

®Registered trademarks—Ralston Purina Co.

John J. Hess
Kinzers - Vintage

Warren Sickman
Pequea

John B. Kurtz
Cedar Lane

James High
Gordonville

John B. Kurtz
Ephrata

Ira B. Landis
Valley Road, Lancaster

Wenger's Feed Mill, Inc.
Rheems

Whiteside & Weicksel
Kirkwood

S. H. Hiestand & Co.
Salunga

John J. Hess, II
Intercourse - New Providence

PATZ
Sales & Service
Barn Cleaners - Silo
Unloaders - Cattle Feeders
Robert K. Rohrer
Quarryville, R. D. 1
Hensel KI 8-2559

FARM LOANS

Loans for Machinery, Livestock, Cars, Repairs, and any farm purpose.
10 - 35 year Farm Mortgage - Full and part-time farms eligible

FARM CREDIT OFFICE

411 W. Roseville Rd.
Lanc. 393-8921

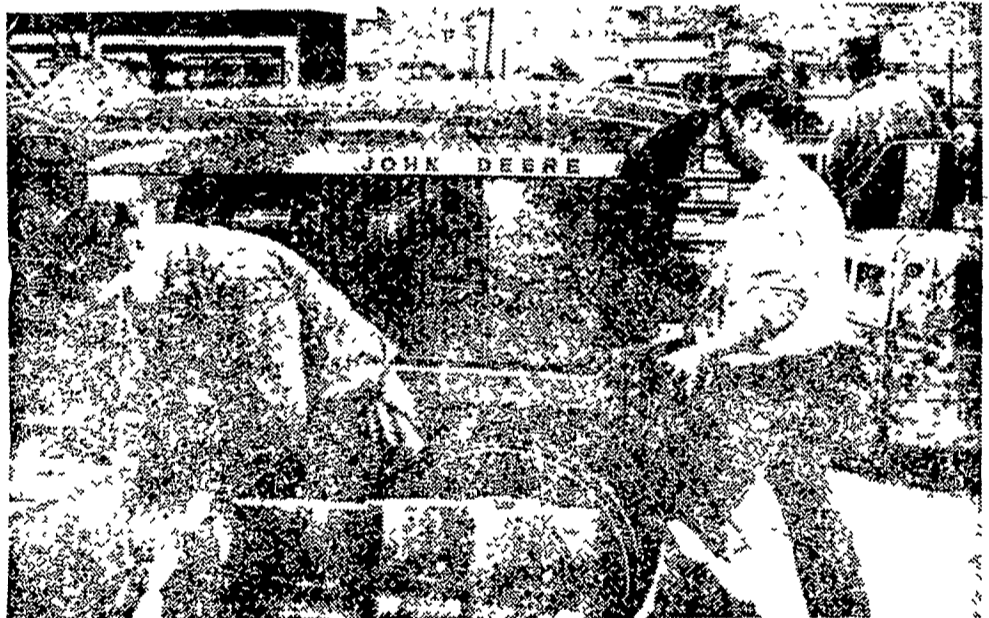
SPRAYING Service

Dairy Barns
Poultry Houses

CARBOLA

Disinfecting White Paint
● Dries White
● Disinfects Against Disease
● Kills Flies; 90% Less Cobwebs 8 to 10 Mo.

DISINFECT
POULTRY HOUSES
6 Witmer Rd., R4, Lanc.
Maynard Beitzel
Phone 392-7227



In Our Parts Department, the Seasons Run Early Before the first baler, forage tool, combine or picker takes to the field, the harvest season is over in our parts department. Weeks ago, our parts specialist took inventory of his stock. Then, using factory-prepared catalogs, he placed his orders well in advance of the season. Thanks to his foresight, you can move through the entire year's operations comfortably aware that your John Deere partsman has anticipated your needs and stands ready to help. Excellent parts follow-through is another customerized service that helps insure you of greater satisfaction and value when you invest in modern John Deere products from **The Long Green Line.**

M. S. Yearsley & Sons
West Chester 696-2990

Alan Beyer
Christiana LY 3-5687

Shotzberger's
Elm 665-2141

A. B. C. Groff, Inc.
New Holland 354-8001

Landis Bros. Inc.
Lancaster 393-3906

H. S. Newcomer & Son
Mt. Joy 653-3361

Wenger Implement Co.
Buck BU 4-4467

