

# Market News Reports

## At Lancaster Yards

### Weekly Review

Friday, January 31

**CATTLE** 2375 Compared with 2547 head last week Supply includes 60 percent slaughter steers and 25 percent feeder steers. Compared with last weeks close, slaughter steers weighing under 1150 lbs steady to weak, weights over 1150 lbs mostly 50 lower Cows 50 lower Bulls steady to 50 lower Feeder steers generally steady Trading slow Slaughter steers lot High Choice 1037 lbs 24 00 Load Choice about 1150 lbs 23 75, Choice 950-1250 lbs 22 00-23 50, several loads Choice 1300-1381 lbs 20 50-21 75, Load High Choice 1354 lbs 22 75, Good to low Choice 20 50-22 00

Heifers Good and Choice 800-950 lbs 20 00-21 85

Cows Cutter and Utility 13 25-14 50, Canner and low Cutter 12 00-13 25, Shelly canner down to 10 50

Bulls Utility and Commercial 19 50-22 00 Good grade 22 00-23 00

Feeder steers Few loads Choice 800-1025 lbs 21 00-22 00, Load Choice 795 lbs 22 50 Few lots Choice 500-575 lbs 24 00-25 00, Two loads Choice 650 lbs 23 65, few Medium and Good 650-800 lbs 17 00-20 00, Lot Medium 400

lbs. 19.00.

**CALVES** 525. Compared with 831 head last week. Vealers steady with last weeks close, Trading Active. Choice and Prime grade vealers 35 00-38 00, few 39.00, Good 31.00-35 00 Standard 27.00-31 00, Utility 23 00-27 00.

**HOGS** 1425. Compared with 1558 head last week Barrows and gilts and sows steady. Trading moderately active

Barrows and gilts U S 1-2, 190-230 lbs 16 50-17 00, No 1, 190-225 lbs. 17 00-17 50, few small lots to 18 00, U. S 1-3, 190-240 lbs 16 00-16 50, U S 2-3, 230-250 lbs 15 50-16 00.

Sows U S 1-3, 300-450 lbs 12 00-13 50, U. S 2-3, 450-600 lbs 11 00-12 00.

**SHEEP** 300 Compared with 297 head last week Woolled slaughter lambs 1 00 lower Choice 70-100 lb woolled slaughter lambs 22 00-23.50, few lots Choice and Prime 23 50-24 00 Good 19 50-22 00

## Chicago Cattle

### WEEKLY REVIEW

**CATTLE** — Salable receipts first four days 27,100, compared 27,300 week ago and 29,000 a year ago.

Compared last Friday, slaughter steers 50-75 lower, (Continued on Page 3)

## Vintage Sale

Tuesday, January 28

**CATTLE**. 479 Supply includes 32 percent cows. Compared with last Tuesday's market; Slaughter steers weighing under 1200 lbs. 25-50 lower; weights over 1200 lbs 50-1 00 lower. Cows 50 lower. Bulls about steady.

Slaughter steers Grading Choice 950-1250 lbs. 22 25-23 50, several to 23 85, few head 24 00-24 10, 1340-1360 lbs. 21. 85-22 50, Good to low Choice 22 00-22 25, 1300-1435 lbs 19. 25-20 50. Standard 19.00-20. 50.

Heifers: Choice 880-1040 lbs. 21 50-22.25.

Cows: Cutter and Utility 13 00-14 60, Canner and low Cutter 12 00-13 00, Shelly canner down to 10.50.

Bulls. Utility and Commercial 19.50-21 10.

Lot Choice 862 lb Feeder steers 21.10, Lot Choice 764 lbs. 22 35, lot Medium 872 lbs. 16 35.

**CALVES** 307 Vealers strong to 1 00 higher Choice and Prime 35.00-37 50, few to 39 50, Good 29.00-35.00, Standard 26 00-29.00, Utility 22. 00-26 00

**HOGS** 193 Barrows and

## New Holland Auction

Thursday, January 30

**CATTLE**. 762. Supply includes 30 percent cows Compared with last Thursday's market, slaughter steers 50-1.00 lower. Cows steady to 50 lower. Bulls weak.

Choice 950-1250 lb slaughter steers 22.00-23 75, several 1000-1175 lbs 23.8/4 25, 1250-1400 lbs 21.00-22 00, Good to low Choice 20 00-22 00, 1300-1400 lbs 19 00- 20 50, Standard 19 00-20 00

Utility and Standard Heifers 16 50-20 00.

Cows Cutter and Utility 13 00-14 75, Canner and low Cutter 12 00-13 50, Shelly canner down to 11 00.

Bulls: Utility and Commercial 19.50-21 50 Lot Choice, 865 lbs feeder

gilts steady U S 1-2 205-216 lb Barrows and gilts 16 35-16. 50, U S 1-3, 195-235 lbs 16. 00-16 75, few lots No 1, 175-193 lbs 15 50-15.60 U S. 1-3, 350-550 lbs Sows 11.50-13 10.

Choice 44-67 lb. Feeder Pigs single mules brought \$125-210. Draft horses by the pair brought \$300-525. Riding horses were \$100-195, and driving horses brought \$125-395. Ponies

steers 21 10, Lot mostly Choice 605 lbs. 22.00, few lots Medium and Good 870-980 lbs. 18 25-18.85.

**CALVES** 280. Vealers weighing under 110 lbs strong to 1.00 higher; weights over 110 lbs. strong.

Choice and Prime grade vealers 35.00-40.00, few to 40. 50, Good 31.00-35.00, Standard 27.00-31.00, Utility 22.00-27 00, cull 17.00-22.00.

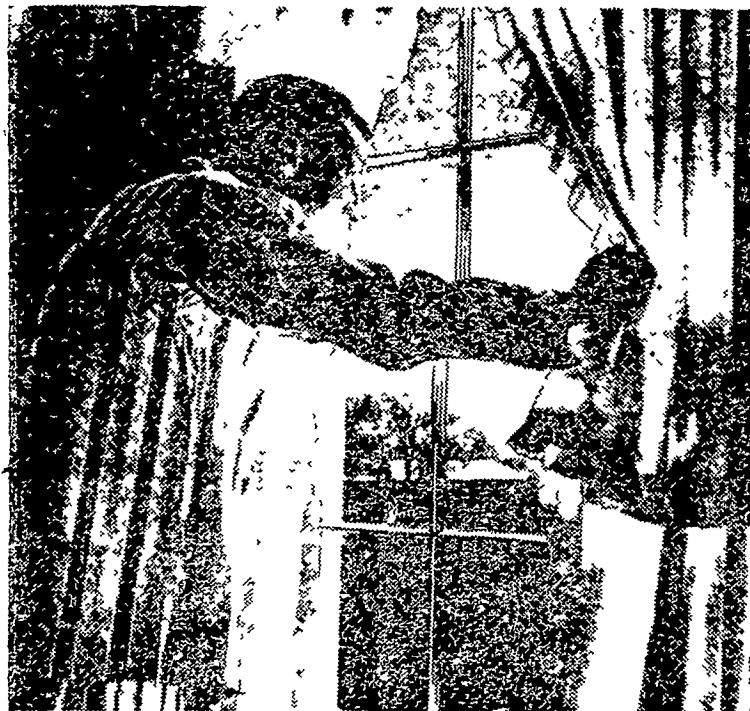
**SHEEP** 2. Not enough on sale to establish a market.

The 112 cows, four stock bulls and 20 stock heifers met a steady market at the January 29 auction of dairy cattle.

Fresh Holsteins brought \$275-375; Guernseys \$150-225, and other breeds \$150-250. Stock bulls were \$140-185, and stock heifers \$65-140.

At the January 27 sale of horses ponies and mules, the 268 head sold steady. Mules by the pair were \$300-570, while single mules brought \$125-210. Draft horses by the pair brought \$300-525. Riding horses were \$100-195, and driving horses brought \$125-395. Ponies

(Continued on page 3)



**Be ready to go when the weather's right...**

*Let us put your tractor in top working condition now*

When you roll out of bed that certain spring morning, and the weather's finally right for a real day's work... will your tractor be fully up to it?

You can be sure by letting us take care of necessary service work now. Our John Deere-trained staff will do the best possible job, at reasonable cost. Make a service date with us soon. You'll like our work.

**Alan Beyer**

Christiana LY 3-5687

**Wenger Implement Co.**

Buck BU 4-4467

**A. B. C. Groff, Inc.**

New Holland 354-8001

**H. S. Newcomer & Son**

Mt. Joy 653-3361

**Landis Bros. Inc.**

Lancaster 393-3906

**Shotzberger's**

Elm 665-2141

**M. S. Yearsley & Sons**

West Chester 696-2990



**BRE-BITS ... AVAILABLE ONLY FROM EASTERN STATES**

# BRE-BITS

The Life Insurance for the chicks you buy from breeders



**Bre-Bits ... fed by major breeders in the Northeast**

The lifeline that transfers nourishment from the breeder hen to the egg and then on to the baby chick is BRE-BITS! Highly fortified, specially formulated, constantly up-dated — that's BRE-BITS. The result of exhaustive, cumulative total research and offered as the greatest value for the highly important feed dollar — that, too, is BRE-BITS. Plus ... Feed Additive Extras to meet the specific requirements of the breeder hen and the baby chick. Result: greatest all 'round earnings per bird in hatching eggs and healthy, husky chicks with top sales appeal. For highest quality — highest profits — Buy BRE-BITS from ...

**Eastern States FARMERS' EXCHANGE**

A farmer-owned cooperative • Headquarters West Springfield, Massachusetts

