

Sr. Extension Square Dance Club To Compete

Competing in the 6th annual Folk Dance Contest at the Pennsylvania Farm Show in Harrisburg on Tuesday evening, January 14, is the Senior Extension group from Lancaster reports Victor Plastow, Associate Agricultural Agent.

The contest, which is open to all clubs, groups, and organizations in Pennsylvania, should prove a very colorful spectacle. Groups from 27 counties have been accepted in the competition.

The Lancaster group has been practicing the numbers which the entire 60 sets in the competition will be performing together. The Danish system of judging is to be used, which may result in more than one set finishing in the Blue Ribbon Class. In order to win cash awards, the sets will first perform enmass, then the judges will select the better dancers to compete for Blue, Red, and White ribbons, in each division. Any number of sets may be placed in each category by the judges.

Coffee was prescribed as a medicine before it was used as a beverage.



\$3.85 cwt. - bulk

Delivered on your farm in 5 ton lots

Make the most of Beacon's great new milking ration and this new low price—place your order today.

Beacon Prof-Ets constitute a nutrition packed 16% milking ration for your cows. In a significant advance in dairy cow nutrition Beacon offers this feed . . . including crimped whole grains and beet pulp . . . in a 1/2" pellet.

Get the benefits of Beacon Prof-Ets for your cows now!

- The 1/2" pellet size permits use of whole crimped grains and beet pulp, not just ingredients available only in fine particle size.
- High feed digestibility and production of more normal proportions of volatile fatty acids is assured.
- Cows relish Beacon Prof-Ets . . . get more of the nutrition packed into each pound.
- You get greater returns for your feed dollar at this new low price.

WHY NOT PLACE YOUR ORDER TODAY?

BOMBERGER'S STORE Elm	I. B. GRAYBILL & SON Strasburg
FARMERS SUPPLY COMPANY Lancaster	O. K. McCRACKEN Manheim
CLEM E. HOOBER Intercourse	MILLPORT ROLLER MILLS R#4, Lititz
GEHMAN'S FEED MILL Denver	EARL SAUDER, INC. New Holland

WENGER'S FEED MILL
Rheems

Beacon Division of Textron Inc.
YORK, PA.



Farm Show Schedule

(Continued from Page 15)

tion, Meeting, Room B, Main Show Building.

2:30—Judging Spotted Poland Chinas — Small Arena.

3:00—Pennsylvania Yorkshire Club, Room F, Main Show Building.

4:00—Dairymen's Association, Meeting, Assembly Room, Penn-Harris Hotel.

TUESDAY EVENING, JANUARY 14

Banquets

6:30—Crop Improvement Asso. Banquet, Penna. Farm Bureau Cafeteria, 3609 Derry Street.

6:30—State Beekeepers' Association, Colonial Park United Church of Christ, 5000 Devonshire Road, 3 miles east of Harrisburg.

6:30—Dairymen's Association, Annual Banquet — Penn-Harris Hotel, Ballroom.

Meetings and Special Events

6:15—F. F. A. Band Concert — Large Arena.

7:30—Folk, Dance Festival and Contest — Large Arena.

WEDNESDAY MORNING, JANUARY 15

8:00—Judging Brown Swiss — Including 4-H Club Classes — Large Arena.

8:00—Judging Jerseys — Including 4-H Club and Vocational Classes — Large Arena.

8:00—Pennsylvania Holstein Association —

Breakfast Meeting — Barbecue Cottage, 4401 Jonestown Road, Route 22, one mile east of Harrisburg.

8:30—Vocational Demonstration Contests, Room A (Auditorium), Continuous until 6:00 p.m.

9:00—Judging Angus — Large Arena.

9:00—Judging Herefords — Large Arena.

9:30—Future Farmers of America Executive Committee reconvenes, Cumberland Valley High School.

9:30—Future Homemakers of America Meeting, The Forum, Education Building.

10:00—Christmas Tree Growers Asso., Meeting, Holiday Motor Hotel, West.

10:00—Spotted Poland China Sale — Small Arena.

10:00—Poultry Federation Meeting, Room B, Main Show Building.

10:00—Pennsylvania Vegetable Growers' Association Meeting, Room F, Main Show Building.

11:30—Poland China Sale — Small Arena.

WEDNESDAY AFTERNOON, JANUARY 15

Meetings

12:00—Judging Polled Herefords — Large Arena.

12:30—Judging Shorthorns — Large Arena.

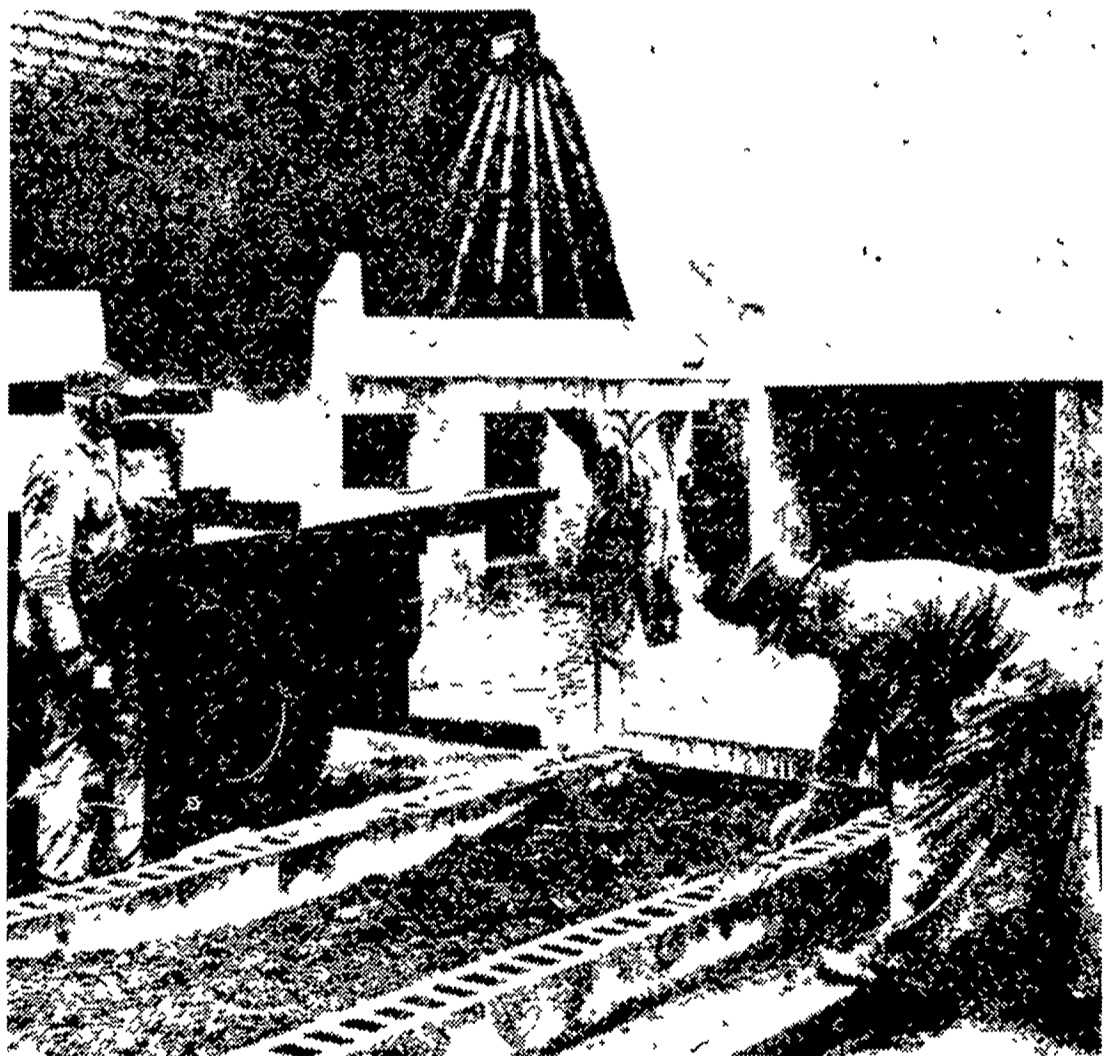
1:00—Christmas Tree Growers Assoc. reconvenes, Holiday Motor Hotel, West.

1:00—Chester White Sale — Small Arena.

1:00—Future Homemakers of America,

(Continued on Page 17)

NEW . . . from KURTZ Precast KURTZ BUNK FEEDERS



- Smooth surface, hard finish concrete.
- Easy to move in event of structural changes.
- Low cost.

KURTZ Precast Concrete Mangers

- Smooth surface, hard finish concrete
- Cast-in inserts save installation time
- Easy to move in event of structural changes
- Bolted together and finished for one piece appearance
- Available in 3'6", 4', 4'6" lengths

KURTZ Precast Corp.

EPHRATA
Area Code 717
733-1700

READING
Area Code 215
777-6553