



HERD SIRE, MAX, DEMONSTRATES the gentle nature of Belted Galloway bulls. George Knight feeds the bull from a bucket while the owner, Nathaniel Saltonstall looks on. Bulls must have a complete belt to be eligible for registration. L. F. Photo.

● **Belted**

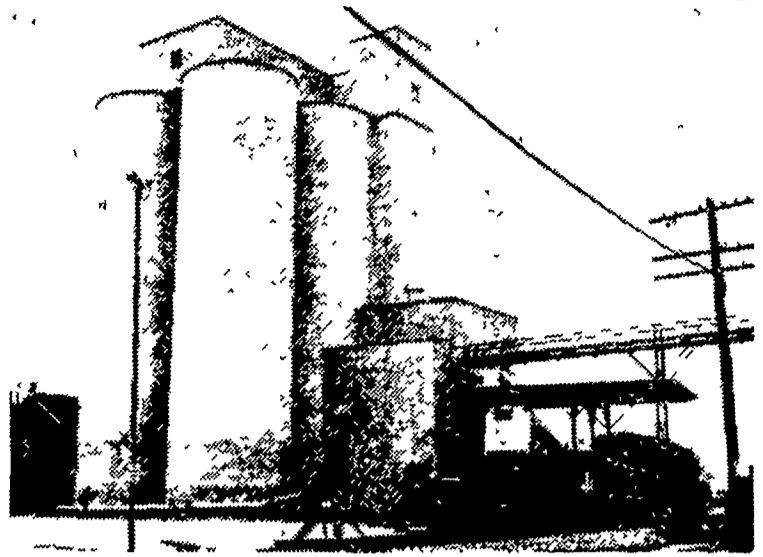
(Continued from Page 8)
A herdbook for the breed was formed in 1921 under the title of The Dun and Belted Galloway Cattle Breeders' Association. In 1951, because more of the Dun Galloways were being registered in the Galloway herd book, the association changed its name to the Belted Galloway Cattle Society.

The American Belted Galloway Cattle Breeders' Association was formed in 1954 under the presidency of Harry A. Prock, Hapwood Farms, Camp Hill Road, Whitmarsh, Pa. Mr Prock owns the only other herd in the state.

One of the original vice presidents was A. H. Chatfield, Jr., Rockport, Maine. It was from Chatfield that Saltonstall purchased the original six cows and bull for the foundation of the Lancaster County herd.

All males must have a complete white belt and no white on the legs or feet to be eligible for registry, Saltonstall said. Females may be registered with incomplete belts, but the registration does not become permanent until a cow has dropped a calf with a white belt.

George Knight who farms



NEW STORAGE FACILITIES recently completed by D. E. Horn and Co. of York.

the Wittel farm says the cattle are easy-going and gentle — especially the bull. Their tough hide and characteristically shaggy hair coat makes them somewhat more impervious to barbed wire, but they are not hard to hold with electric fencing.

Both he and Saltonstall would like to see more "Bel-ties" grazing on Lancaster County's rolling pastureland.

Feed Company Expands Plant

D. E. Horn and Co., Inc., York, Penna., manufacturers of HORNCO feeds, recently completed another step in their long range expansion and modernization program when they opened their new grain elevator.

The slip form concrete grain elevator is located across the railroad tracks from the HORNCO mill. Grain is unloaded from rail car or truck by the most modern facilities. The stored grain can be unloaded into car or truck or can be delivered direct into the mill by a screw conveyor that is elevated over two railroad lines.

The facility is so designed that capacity can be tripled when needed. The eight bins included in the elevator are all equipped with an aeration system to keep the grain at the peak of quality.

Clean out sprayers and spray equipment before putting them in winter storage.



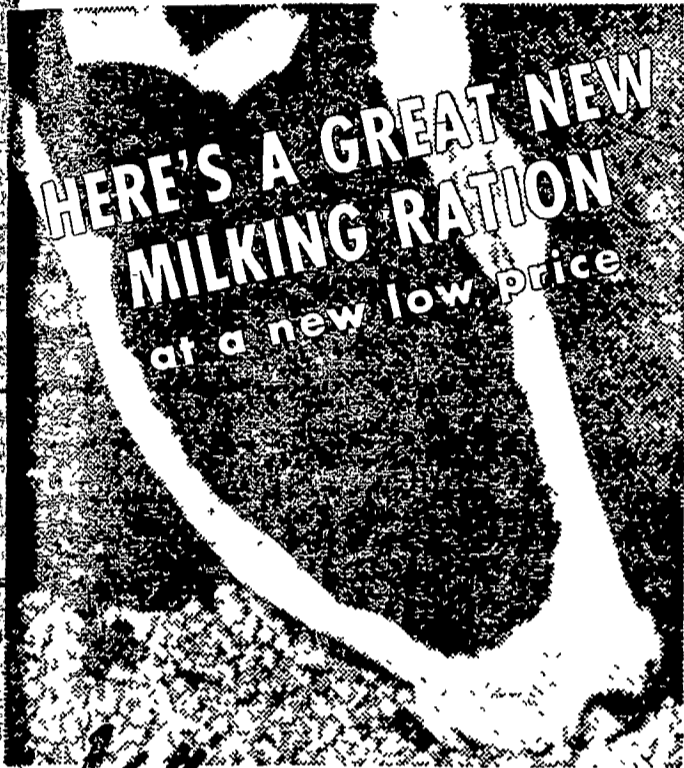
We have DEKALB STARTED PULLETS

Ready to Make You MONEY

★ ★ ★
DEKALB BREEDING + DEKALB's Prescribed Started Pullet Program + Our "Know-how" Give You AN UNBEATABLE COMBINATION.

"DEKALB" is a Registered Brand Name. The Number is a Variety Designation.

Headquarters for DeKalb Pullets
DUTCHMAN FEED MILLS, INC.
Stevens, R. D. 1, Pa.
Phone Ephrata 733-3020



1/2" PROF-ETS

\$3.85 cwt. - bulk Delivered on your farm in 5 ton lots

Make the most of Beacon's great new milking ration and this new low price — place your order today.

Beacon Prof-Ets constitute a nutrition packed 16% milking ration for your cows. In a significant advance in dairy cow nutrition Beacon offers this feed . . . including crimped whole grains and beet pulp . . . in a 1/2" pellet.

Get the benefits of Beacon Prof-Ets for your cows now!

- The 1/2" pellet size permits use of whole crimped grains and beet pulp, not just ingredients available only in fine particle size.
- High feed digestibility and production of more normal proportions of volatile fatty acids is assured.
- Cows relish Beacon Prof-Ets . . . get more of the nutrition packed into each pound.
- You get greater returns for your feed dollar at this new low price.

WHY NOT PLACE YOUR ORDER TODAY?

- | | |
|--|--|
| BOMBERGER'S STORE
Elm | I. B. GRAYBILL & SON
Strasburg |
| FARMERS SUPPLY COMPANY
Lancaster | O. K. McCracken
Manheim |
| CLEM E. HOOBER
Intercourse | MILLPORT ROLLER MILLS
R#4, Lititz |
| GEHMAN'S FEED MILL
Denver | EARL SAUDER, INC.
New Holland |

WENGER'S FEED MILL
Rheems

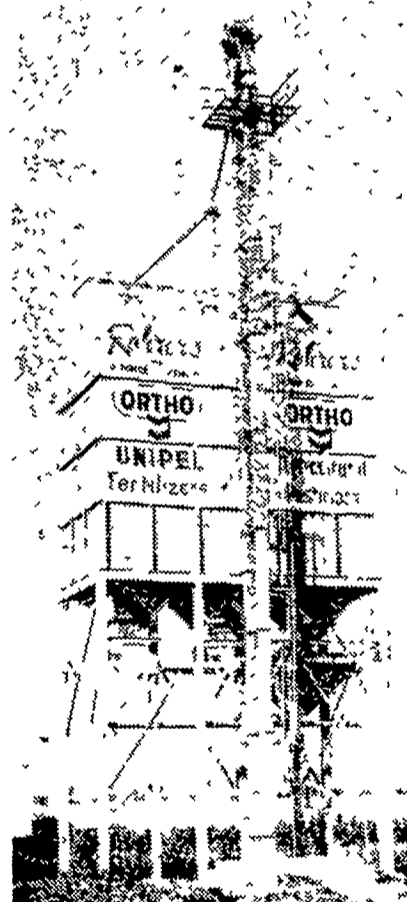
Beacon Division of Textron Inc.
YORK, PA.



ORTHO UNIPEL FERTILIZERS

Can help you make more money on your farm crops

- Uniform, free-flowing, coated pellets
- Contains fast acting and long lasting Nitrogen and Phosphate
- Clean and easy to handle
- Available in bulk or 50 lb. bags
- Bulk spreader service
- Bulk portable bins
- Trucking allowance for customer pick up at Smoketown



Four analyses to choose from

- | | |
|-----------------|-----------------|
| Unipel 16-16-16 | Unipel 20-10-10 |
| Unipel 10-20-20 | Unipel 13-34-10 |

CONTACT US NOW FOR EARLY SEASON PRICES AND LIBERAL DISCOUNTS.

T.M. Reg. U.S. Pat. off. Ortho and Unipel

P. L. ROHRER & BRO., INC.

SMOKETOWN Ph. Lanc. 307-3539