

Lancaster Farming Ads Pay!

Farm Bureau HYBRIDS

**SELLING
FASTER
THAN
EVER
BEFORE!
book
YOURS
NOW
FOR
SPRING!**

You'll be time and money ahead to order your seed corn from Farm Bureau NOW. You'll be sure of getting the varieties you want, have them on hand when you need them, yet not have to pay until next spring.

SAVE!

50c Per Bushel

**Booking Period
Ends — Dec. 20th**

PICK NOW!

Choose the hybrid that fits your need from

23 Varieties

PAY LATER!

Book early and guarantee yourself the savings on spring delivery!



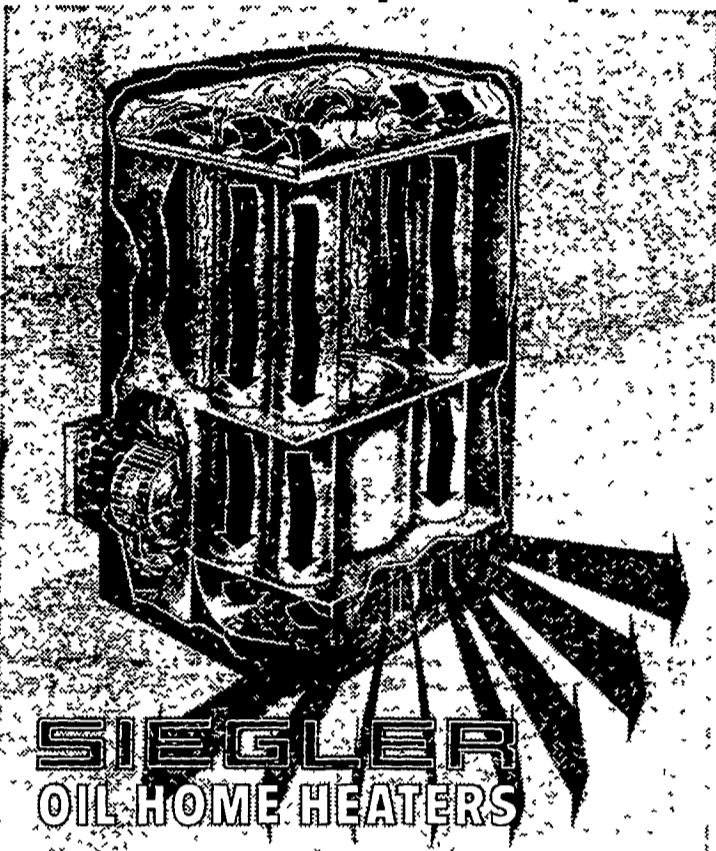
Lancaster
394-0541

New Holland
354-2146

Manheim
665-2466

Quarryville
ST 6-2126

One Look Inside will show you why



OUTHEAT ALL OTHERS



Behind the gleaming, porcelain cabinet you'll find a patented inner unit that makes super floor heat possible. Look at the big blower wheel that drives the air through a battery of inner heat tubes that set right in the heart of the fire! Sieglers doesn't wait for the heat to come out... it goes right in after it, then forces it over your floor! Come in and see for yourself why Sieglers Outheats-Outlasts all others!

ONLY SIEGLER GIVES YOU MORE AND HOTTER HEAT OVER YOUR FLOORS

L. H. BRUBAKER

350 Strasburg Pike - Lancaster — R. D. 3, Latitz
Phone Lancaster 397-5179
Strasburg 687-6002 — Latitz 626-7766

USDA Proposes Council Of Farm Changes In Tobacco Grades Pass Resolutions

The U S Department of Agriculture Tuesday invited No 2-3, 350-465 lbs sows 10 ges in the tentative grading system for Pennsylvania Seed-leaf tobacco

Pennsylvania Seedleaf tobacco, locally known also as Broadleaf, is a cigar-filler type grown principally in Lancaster County and in surrounding counties of Pennsylvania and Maryland.

The changes, which would reduce the number of grades from 14 to 9, are being proposed to simplify the grading system, and to reflect trends in marketing practices by combining similar grade specifications, according to USDA's Agricultural Marketing Service

Under the new standards, there would be three Stripper (C) grades, three Straight Stripped (X) grades, two Farm Filler (Y) grades, and one Nondescript (N) grade. A "No-G" designation for substandard tobacco would be added.

The proposed grade changes would also restrict length requirements to two grades, change definitions to clarify terms, and simplify the burn-testing procedure.

Members of the AMS Tobacco Division met with trade and grower representatives on Nov 19 in Lancaster. Suggestions from this meeting were incorporated into the proposed standards, USDA officials said

HARRISBURG — A two-fold petition aimed at protecting the state's tobacco industry was forwarded to the United States Tariff Commission by the Pennsylvania State Council of Farm Organizations today following its annual meeting.

Joseph W. Hallowell, Ivyland, who was re-elected president, said the council went on record as opposed to any lowering of import duties on cigar leaf. The same resolution asked the United States Tariff Commission also to stop the importation of stemmed cigar leaf as scrap tobacco.

Scrap tobacco, the council pointed out, is subject to a tariff of only 16 cents a pound against 23 cents for stemmed tobacco.

Other resolutions were enacted calling for

Enabling legislation for Project 70 that would provide protection for individual property owners, and protect local taxing units from loss of revenues as a result of acquisition of property by the state. The same resolution urged that users of proposed recreational facilities be charged fees to make these installations self-supporting.

Legislation requiring users of the right of eminent domain to make a substantial down payment on property before it is entered or appropriated, and that payments in lieu of taxes be made to local government for property removed from tax rolls for recreational purposes and public use.

Trustees of the Pennsylvania State University were asked to study ways for increasing student enrollment in agriculture. The same board got a "thank you" for considering council's request for continuing the office of director of extension in the university's College of Agriculture

Milk Per Cow Down In Nov.

Production per cow during the first 9 months of the year was above the previous year, however it dipped below 1962 for October and November, according to the Pennsylvania Crop Reporting Service

Milk production per cow on Pennsylvania farms during November, at 625 pounds was down seasonally from October but 65 pounds above the November 1957-61 average.

The output per cow on a daily basis for November was 20.83 pounds or 2.16 pounds above the 1957-61 average. October was an extremely dry month and many dairymen had to haul water for their livestock. Heavy rains in early November and again at end of the month replenished water supplies in nearly all areas.

Total milk production on Pennsylvania farms at 528 million pounds was down 15 million pounds from November 1962, but 29 million pounds more than the November 1957-61 average. There was an estimated 83 million more pounds of milk produced during November of this year compared with 1953. There were 844,000 milk cows on Pennsylvania farms during November or 11,000 less than 1962 and 79,000 below the estimate for 1953.

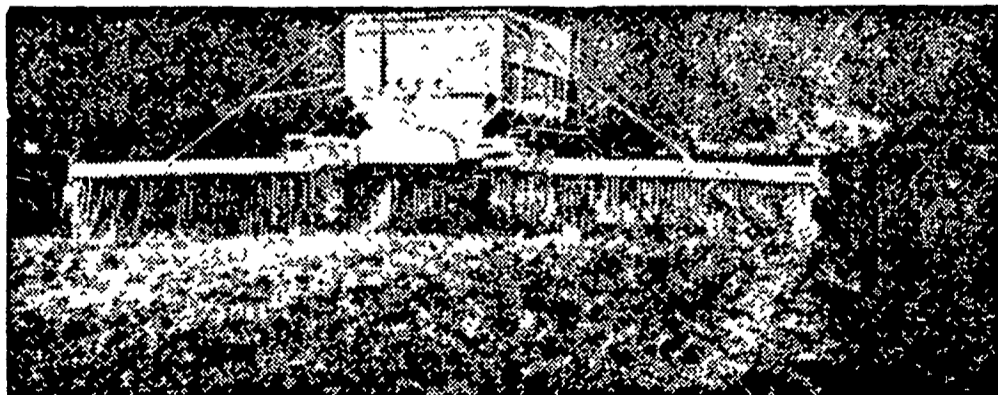
It's easy to move snow FAST with a GRAVELY

- 48" Heavy Duty Snow Plow Attachment
- 2 Speeds Forward -- and REVERSE!
- 19 Attachments for Year-Round Work!

Come in, or Write for FREE Catalog, Demonstration Rebuilt available
James S. Messner
Bareville

GRAVELY
MAKES THE BEST SMALL TRACTOR

MARTIN'S LIMESTONE



Order your Limestone now for even spreading by our modern spreaders.
Quick Service Free Soil Tests Quality Limestone

Ivan M. Martin, Inc., Blue Ball, Pa.

Telephones: New Holland 354-2112 Terre Hill 445-3455
GAP Hickory 2-4148