

● For The Farm Wife
(Continued from Page 9)
cream in crust; spread 2 tablespoons preserves over ice cream; freeze. Repeat two more times with remaining ice cream. In a saucepan over low heat melt marshmallows with remaining 2 tablespoons preserves. Beat egg whites until frothy; continuing to beat, sprinkle in sugar, then slowly pour in marshmallows. Beat until stiff peaks form. Spread on pie, sealing edges. Place pie on board in preheated 500



Don't Neglect Your Eyes
Visit Your Eye Doctor if you are in doubt.
Doctor's Prescriptions Filled. Adjustments, Repairs.
DAVID'S OPTICAL CO.
Always See Better
403 N. DUKE STREET
- Lancaster
Phone 394-2767

degree oven. Bake 1-3 minutes or until meringue is delicately browned. Makes 1 9-inch pie.
To make serving easy, the crust and layered ice cream filling can be prepared in advance and stored in the freezer. Just before dessert time, whip up the marshmallow-flavored meringue, spread it on the pie, sealing the edges carefully, and bake.

CRANBERRY WHIP DESSERT

1 cup sugar
1 cup water
2 cups (1/2 pound) fresh cranberries
1 package orange flavored gelatin
1/2 cup evaporated milk, undiluted
1 teaspoon lemon juice
Combine sugar and water in saucepan. Bring to a boil and add cranberries. Bring to a boil again. Lower heat and simmer until berries pop open (about 10 minutes). Drain berries reserving liquid. Add hot water to liquid to make 2 cups. Dissolve orange gelatin in hot liquid. Add cranberries and chill until thick but not firm. Chill evaporated milk in freezer until ice crystals form. Whip until frothy, add lemon juice and continue beating until stiff. Fold into thickened gelatin mixture. Chill. Makes 6-8 individual servings.

MOLASSES MINCEMEAT PIE

1 package (9 ounces) dehydrated mincemeat
1 1/4 cups water
1/2 cup molasses
2 medium apples, peeled,

Turn mincemeat into a 2 1/2 quart saucepan; add water and stir until lumps are broken. Stir in molasses and apples. Place over medium heat until mixture comes to a boil. Boil rapidly one minute. Line pie plate with half the pastry; turn in mincemeat mixture. Top with pastry; flute edges. Cut slits in top of pastry to allow steam to escape. Bake in hot oven (425 degrees) 30 minutes.

● Have You Heard?

(Continued from Page 9)
member of the family - and rehearse them regularly until everyone understands clearly and can move through the plan swiftly and smoothly.
Keep exit routes clear. Avoid placing ranges, space heaters, and furnaces near doors. Fire could start in one of these and block all escape.
Make sure bedroom windows are large enough and low enough to serve as emergency exits.
Know how to notify your fire department quickly and correctly.

Farm Women 24 See Decoration Demonstration

Mrs. Daniel Will, Mount Joy, presented a program on "How To Make Christmas Novelties and Decorations" at a recent meeting of Farm Women Society 24 at the home of Mrs. Earl Wenger, 239 1/2 New Holland Pike, Lancaster.

Mrs. Anita Hess, was in charge of the business session. The December meeting will include the entertaining of the husbands of members by taking them out to dinner at Kaufman's Tea Room, East Petersburg. The event will be Saturday, Dec. 28 at 7 p.m.

PUBLIC SALE
— Of —
REAL ESTATE
PERSONAL PROPERTY
THE STALLER FARM

R. D., Schuylkill Haven, Pa. (Route 443 - Long Run)
Saturday, Nov. 30, 1963
12 NOON

REAL ESTATE —

APPROX. 32 acres land (500' frontage on both sides of Route 443) 27 acres clear, incl. 2 acres strawberry and large asparagus patch, balance seeded for hay. STREAM runs through property. 2 1/2 story ALUMINUM SIDED house; 9 rooms, bath. Modern electric hot water heater & pump. Bank barn with concrete basement, and other out-buildings.

PERSONAL PROPERTY —

Farm equipment includes C. A. Tractor, plow, corn planter, cultivator, mower, disc, harrow, lime drill, seeder, trailer, cub-tractor, sprayer; Ford Truck (H-tag), chicken & pig equipment. Household articles include stove, refrigerator, freezer, and numerous other articles.

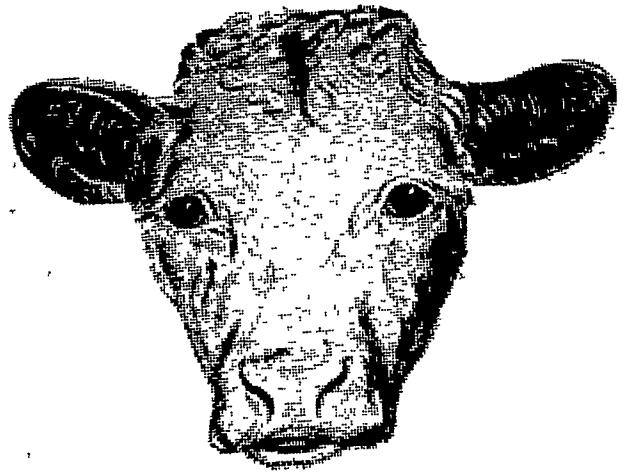
TERMS —

Real estate — 10% at sale; balance 30 days; Personal property — cash (other terms and conditions to be announced at sale).

EARL C. STALLER
Administrator of Estate of
Lloyd H. Staller, Deceased
MABEL M. STALLER

WILLIAM KOCH, AUCTIONEER
(For pre-sale inspection appointment call 739-2340)

Fry this Profit Combination!
Your steers...

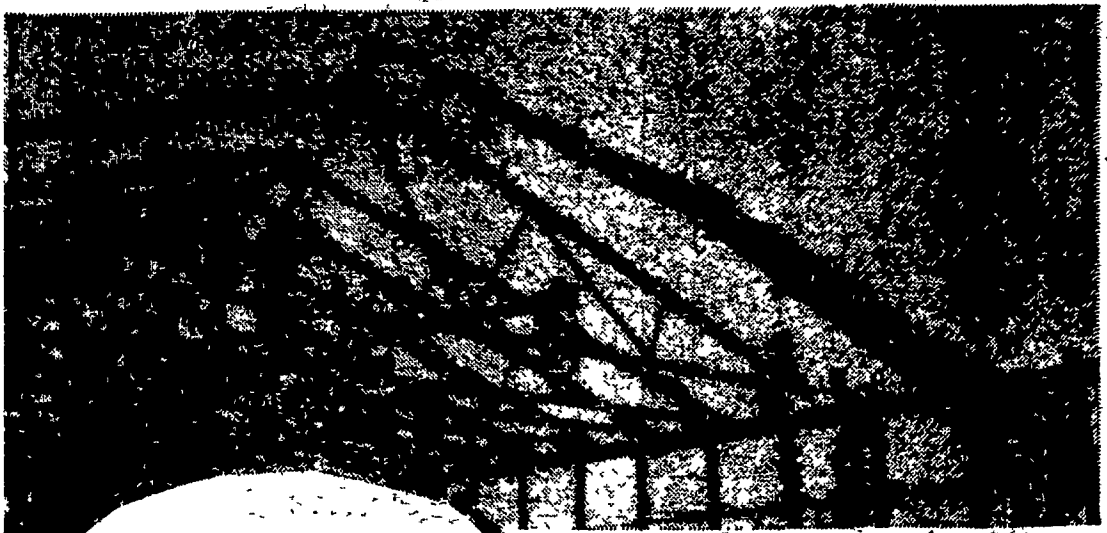


and Red Rose®
Beef Cattle Supplement

Red Rose Beef Cattle Supplement assures quick gains. It supplies vitamin A and D, and all proteins and minerals that are necessary to balance farm roughages of hay, pasture, grain and corn cobs; and contains urea as a protein extender. For your selection, it is available with or without Diethylstilbestrol.

If you have steers on your farm — Red Rose Beef Cattle Supplement should be on your next feed order.

- E. Musser Heisey**
R. D. 2, Mount Joy, Pa.
- Musser Farms, Inc.**
R. D. 2, Columbia, Pa.
- Leroy Geib Est.**
R. D. 2, Mount Joy, Pa.
- Musser's The Buck**
R. D. 1, Quarryville, Pa.
- Elverson Supply Co.**
Elverson, Pa.
- Joseph M. Good & Son**
Newport Road, Leola, Pa.



Have Your Contractor Build You a Better Home... at Less Cost!
Ask for STAUFFER'S Hercules Roof Trusses

- READ THIS:**
Stauffer's Hercules Roof Trusses
1. Give you more flexibility of room planning. In addition you get crack-free ceilings and roofs that don't sag.
 2. Save you \$150 to \$500 per house over conventional roof-framing methods. Self-supporting trusses do away with fitting and cutting of roof members on the job.
 3. Save time and labor costs. Stauffer's special rig (shown above), plus a few men can put up roof trusses for an average house in three hours or less!
 4. Save materials because self-supporting spans eliminate interior bearing partitions.
- WHEN YOU THINK OF BUILDING . . .**
- have your contractor check with Stauffer and build you a better home for less money. (All Stauffer Hercules designs carry a PE Seal and meet FHA, VA and local code requirements.)

H. M. Stauffer & SONS, INC. • LEOLA, PA.
Lumber, Millwork and Building Materials