

County Farm Women Election Names Mrs. L. Myer, President

Mrs. Landis Myer, New Holland R1, was elected and installed president of the Lancaster County Society of Farm Women at the Society's 46th annual meeting last Saturday at Penn Manor High School. Mrs. Myer, a member of Society of Farm Women, 24, succeeds Mrs. Kenneth Eshelman.

Elected second vice president was Mrs. Scott Nissley Jr., 1414 Nissley Rd., a member of society 19. She succeeds Mrs. Paul Witman, Mt. Joy R2, who was elected first vice president. Mrs. Witman is a member of society 8.

Other officers are Mrs. Melvin Stoltzfus, Ronks R2, treasurer, and Mrs. Grayson Cooper, Peach Bottom, secretary.

More than 400 persons attended the day-long convention. Society representatives from Adams, Berks, Cambria,

Chester, Cumberland, Dauphin, Franklin, Greene, Huntingdon, Indiana, Lebanon, Montgomery, Somerset, Washington and York Counties were guests.

State officers attending the meeting were Mrs. Edward Boyd, Somerset Co., president; Mrs. Elmo Mentzer, Cumberland Co., first vice president; Mrs. Horace Myers, Huntingdon Co., second vice president; Mrs. Leroy Bruce, Chester Co., secretary, Mrs. Abner Risser, Lancaster Co., treasurer.

Mrs. Alfred Bartholomew, Lancaster, assistant moderator of the General Synod of the United Church of Christ, was speaker at the morning session. Her topic was "Today's Woman." Dr. William G. Mather, research professor of sociology at Pennsylvania State University, spoke on, "What's Human about Human Nature" at the afternoon session.

Pomona Grange Elects Galbreath

Kirkwood — Thomas Galbreath was elected worthy master of Pomona Grange 71 during its recent meeting at the IOOF Hall here.

Also elected were: Allen Matz, overseer; Miss Marie Murphy, lecturer; Calvin Lord, steward; Melvin Boyce, assistant; Ralph Wanner, chaplain, Charles McSparran, treasurer, Miss Gladys Eby, secretary, Joseph Hess, gate keeper; Miss Helen Wanner, Ceres; Mrs. Morton Fry, Pomona, Mrs. Alice Brinton, Flora, Mrs. Esther Petticoffer, lady assistant steward; Gerald Darlington, executive committee, Alfred Wanner, finance committee, Mrs. Boyce, pianist.

It was announced the Cole-rain Grange will meet Tuesday, Nov. 19, at the home of Mr. and Mrs. Loran Brinton, Little Britain.

Livestock Show Entries Listed

HARRISBURG — Entries of beef cattle, swine and sheep for the seventh Pennsylvania Livestock Exposition, Nov. 11-15 in the State Farm Show Building, Harrisburg, number 3,346 for one of the biggest registrations in the history of the show.

Ben Morgan, general superintendent, today said 1,929 of these are breeding stock, the others market and carcass animals. Entries came from more than twenty states and Canada.

Compared to last year, beef cattle will be holding their own, while swine and sheep both show marked gains for a net total increase of nearly 300 head.

Angus top the beef breeding stock with 144, with Herefords following at 93; Polled Herefords, 80, and Shorthorns, 88. Open class market steers total 61; feeder steers, 80, 4-H and FFA steers, 128, and carcass steers, 37.

Hampshires top 11 breeds of sheep with 154 Dorsets follow with 129; Southdowns, 110; Shropshires, 104; Cheviots, 101; Suffolks, 93; Corriedales, 61; Columbias, 60; Oxfords 52; Rambouillets, 42; Merinos, 36. Market wethers total 329, and carcass wethers, 102.

In breeding swine, Hampshires lead with 112, followed by Chester Whites, 96; Poland Chinas, 87; Spotted Polands, 83; Yorkshires, 80, Berkshires, 70; Durocs, 54. Market barrows total 520, and carcass barrows, 160.

Judging will take the first four days. Hampshire sheepmen will have a national show and sale Wednesday night, Nov. 13. Market animals and feeder

steers will sell at auction on Thursday.

Nighttime entertainment will feature four games of indoor polo, 4-H horse show, demonstrations by the Pennsylvania Arabian Horse Association and the East Coast Cutting Horse Association, five calf scrambles and parades of champion livestock. Both the show and entertainment are free.

A project of the Pennsylvania Department of Agriculture, the exposition has as joint sponsor the Pennsylvania Livestock and Allied Industries Association and is supported by the Pennsylvania State University.

Cloister Dairy Certified By U.S. Public Health

Warren Mohn, president, announced today the certification of Cloister Dairy by the United States Department of Public Health. This certification is granted to dairies who have passed the rigid 191 point inspection of dairy farms and processing plant. This rigid inspection is in addition to the already high standards required of an "A" Quality state of Pennsylvania approved plant.

Cloister Dairy is the only plant in the Lancaster County area with both U S Department of Public Health and Pennsylvania "A" Quality approval.

The first industrial physician of whom there is record was William J. Middleton, M D, of the Pennsylvania Steel Company, at Steelton, Pa.



NEW ALLIS-CHALMERS 190

the 2-row picker for steady work in heavy yields

New picking power for Allis-Chalmers D-19, D-17, WD-45 and WD Tractors!

The new Allis-Chalmers Model 190 is engineered to boost corn-handling ability where it counts:

3 GATHERING CHAINS PER ROW — to keep heavy stalks and foliage moving.

NEW-DESIGN SNAPPING ROLL SECTIONS — for more aggressive action.

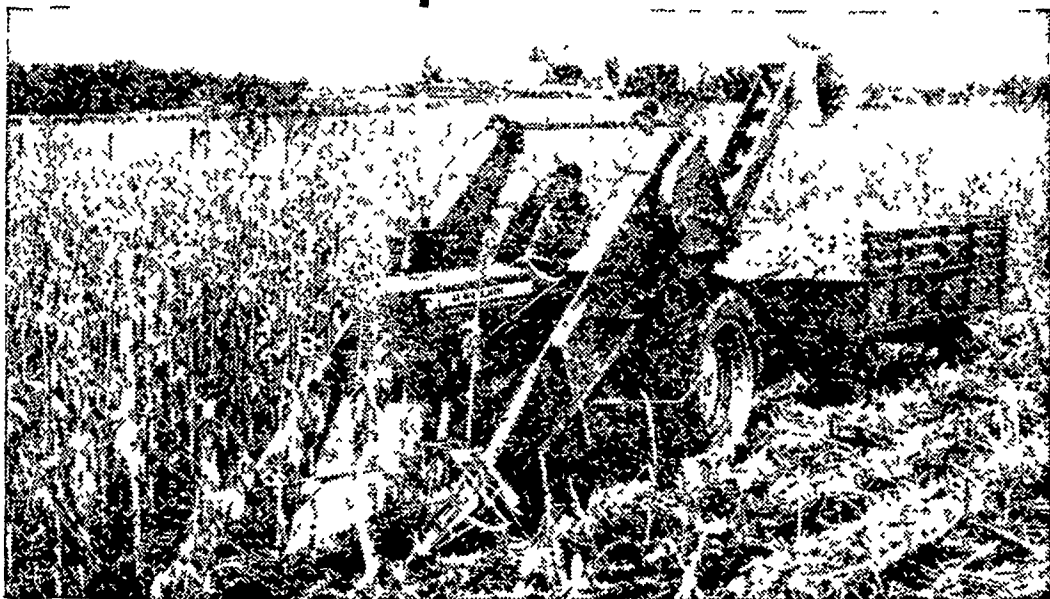
NEW ROTARY FEEDERS — keep big crop volume moving uniformly from snapping rolls to front elevator.

NEW LARGE HOPPER — for uniform delivery to wagon elevator.

NEW FAN LOCATION — well to the rear, mounted on elevator, for sure cleaning.

You GET the corn — with Allis-Chalmers long, sloping gathering snouts . . . adjustable stripper plates . . . fast, clean, rubber-on-rubber husking . . . shelled corn savers directly under husking beds.

Ask us about Allis-Chalmers' Time Payment Plans.



ALLIS-CHALMERS SALES & SERVICE

N. G. Myers & Son
Rheems, Pa.

Nissley Farm Service
Washington Boro, Pa.

Grumelli Farm Service
Quarryville, Pa.

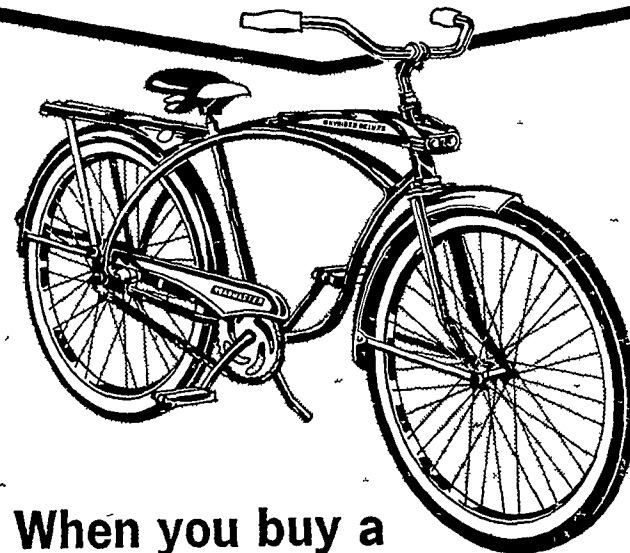
L. H. Brubaker
Lancaster, Pa.

Allen H. Matz
Farm Equipment
New Holland, Pa.

L. H. Brubaker
Lititz, Pa.

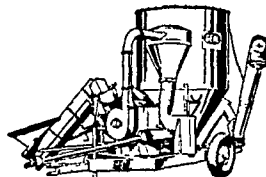
Lausch Bros. Equipment
Stevens, Pa.

FREE* BICYCLE



When you buy a

GEHL Mix-All



There's a free \$50 value Roadmaster Bike waiting for your youngster. Waiting for you is the best feedmaking

possible on the farm. You get both when you order your Gehl Mix-All before Dec. 1, 1963.

The Mix-All features more thin, steel hammers (66) and larger grinding surface (507 sq. inches) than any other farm mill. Together they turn out uniformly textured roughage and grain that can blend thoroughly with supplements in Gehl's 2-ton mixing hopper.

A swinging auger feeder and exclusive crusher head, plus many other features, add to the high quality of the finished ration.

Stop in today for details. Better yet, order your Mix-All and make two people happy. You and your youngster (or your favorite niece or nephew).



*Free bonus bike offer ends Dec. 1, 1963. Choice of boy's or girl's 26 in. bike.

N. G. HERSHEY & SON

Manheim, Pa.