

Beef Sale

(Continued from Page 1)
from the four counties of Lancaster, Dauphin, Chester and Northumberland.

Buyers of the club steers included:

Acme Markets, Philadelphia, Kunzler and Co., Inc., Lancaster, Host Motel, Lancaster; Watt and Shand, Lancaster; A H Hoffman Seeds, Inc., Landisville, H F Hildebrand, Strasburg; Zimmerman's Restaurant, Lancaster, Modford, Inc., Chester, Armstrong Cork Co., Lancaster, Thomas Hewes Vintage, Heinz Riverside Abattoir, Baltimore, Martin's Dairy, Lancaster, Shaub's Shoe Shop Inc., Lancaster, Kolheffer Food Market, Lancaster, Lancaster County National Bank, Lancaster; Lem-bene's Butcher Shop, Chester, Farmers Bank and Trust Co., Lancaster, W. C. Diller Trucking Co., Lancaster; Way Oil Co., Lancaster; Sears Roebuck and Co., Lancaster; Union National Bank of Mount Joy, Mount Joy, Arbogast and Bastian, Inc., Allentown; Garvin's, Lancaster; Fred Linton, Quarryville; Schluderberg-Kurdie Co., Inc., Baltimore;

Penn Dairies Inc., Lancaster; Bara Food, Pottsville; Holiday Motel, Lancaster.

Baum's Bologna, Inc., Elizabethtown; A. K. Mann Jr., Lancaster; Howard S. Bunting Sons, Lancaster; Elmer Sensenig Food Market, New Holland; Gatelli Wholesale Meats, Philadelphia; Conestoga National Bank, Lancaster; Jacob H. Ruhl Inc., Manheim; Markley's Meats, Lancaster; Herbies Meat Market, Downingtown, Bombergers Store, Elm; J Richard Nissley, Landisville; Dauphin County 4-H Baby Beef Club, Sechrist Bros., Dallastown, Union League, Philadelphia, The Bell Telephone Co of Pennsylvania, L W Kulp, Manheim; Knights Meat Market, Penryn, Wenger Feed Mill, Rheems; Farmers National Bank, Lititz, Greenawalt and Keck, Lancaster, Musser Food Locker, Buck, Samuel K Sholtzberger Trucking Co., Lancaster, A B Hollinger and Son, Inc., Lancaster, Wiggins Chevrolet Co., Lancaster, Bayuk Cigars Inc., Lancaster, Reliable Truck Co., Lancaster, Stauffer's Suburban Diner, Lancaster, Musser Leghorn Farms, Florin,

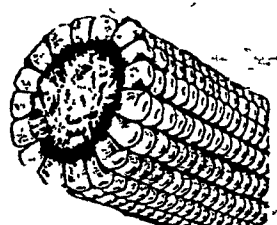


CHRYSANTHEMUMS BY THE THOUSANDS color the landscape on the Harold Kreider farm north of Lititz. The Kreiders got started in the business of raising "mums" three years ago when they received two plants from a nursery as a bonus for buying two shade trees. Both the original plants died, but Mrs. Kreider was so interested in the flowers that she got a few plants from a cousin. Since then, the chrysanthemum bed has grown to 5,000 plants of some 45 varieties. Kreider says the dry weather cut the flowers short this year, but still some of the plants were in bloom for more than 12 weeks. A mulch of corn cobs helps to keep the soil moist and two coverings with an insecticide spray, applied with a boom-type crop sprayer, kept the plants insect free. "We would like to have 100 varieties next year," Kreider says.

L. F. Photo.

More farmers each month prefer to buy their

- HAY ● STRAW
- EAR CORN



from us for better value and all around satisfaction. At farm or delivered, any quantity as your requirements may be.

Area Code 717 687-7631

Esbenshade Turkey Farm

SINCE 1890
PARADISE, PA.

Schultz's Diner, Nazareth, Consolidated Dressed Beef Co., Philadelphia

Fred F Groff Inc., Lancaster; Manheim Auto Auction Inc., Manheim, Ralph Myers Sons Inc., Salunga, J C Snavely and Son, Landisville, Glass Kitchen, Lancaster; Schick Inc., Lancaster, W E Heistand, Elizabethtown, S. L. Herbrön and Sons, Lancaster, Eby's Mill, Lititz, White Oak Mill, Manheim; Walter M. Dunlap and Sons, Inc., Lancaster; Johnson Cattle Co., Lancaster, Arnold's Garage, Maytown, and Roy Rice, Silver Springs.

County Riders To Go To State 4-H Competition

Five members of Lancaster County 4-H horse clubs will exhibit their skills next week at the state 4-H horse show in the Farm Show arena, Harrisburg.

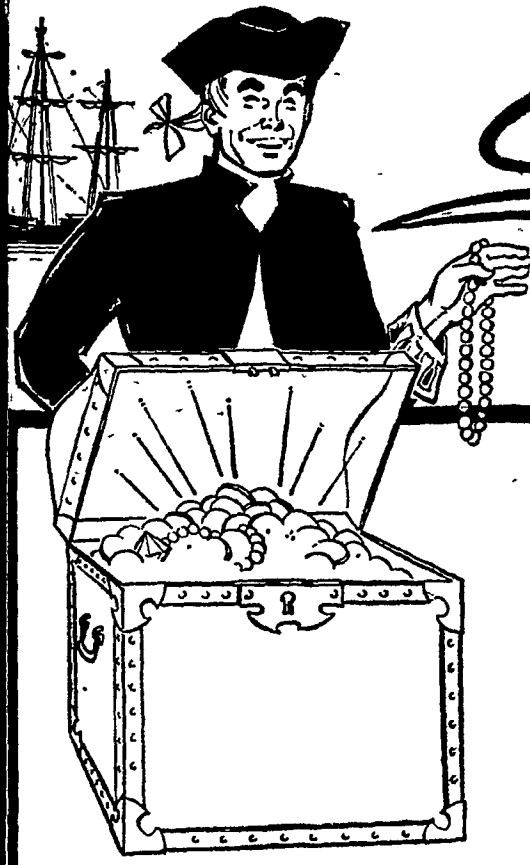
The exhibition will get under way at 6:30 p.m. November 14, and will continue through the next day as part of the Pennsylvania Livestock Exposition.

Competing for state laurels

will be Michael Shoemaker, Quarryville R2, and Joe Wivell, Columbia R1, in the Barrel Race Wivell will also compete in the Pole Bending class. Rosemary Binkley, Quarryville R3, will ride in the Saddle Seat Equitation class — junior division, while her sister, Anna Mary, will compete in the senior division.

Mary Ann Gabriel, Quarryville, will compete in the English Pleasure class, and she will show an animal in the Weaning class.

The youthful riders won the right to participate in the state show by finishing first or second in a class at the District 10 show earlier this year.



Get EXTRA Cash by Trading NOW!

EARLY TRADER'S BONUS!

We're trading big! The maximum on trade-in allowances plus a cash bonus—that's what we'll give you if you trade now.

- Trade machinery that needs repairs.
- Trade machinery that won't last another season.
- Trade good equipment that you're not using.
- Trade equipment your farm has outgrown.

... but trade now on a new tractor, combine, corn picker, or any other major machine. You'll be glad you did.

We'll pay you an Early Trader's Bonus of 6% interest per annum for a specified time on the value of your trade-in and/or any cash payment. You get the bonus within a few days after you place the order.

COME IN NOW! LET US FIGURE YOUR EARLY TRADER'S BONUS. DON'T DELAY— EVERY DAY COSTS YOU MONEY AT THE RATE OF 6% PER ANNUM—IN CASH.



C. B. Hooper
INTERCOURSE
768-8501

Cope & Weaver Co.
NEW PROVIDENCE
ST 6-7351

Kauffman Bros.
MOUNTVILLE
285-9151

D. L. Diem & Sons
LITITZ
626-2181

J. Paul Nolt
GAP
HI 2-4183

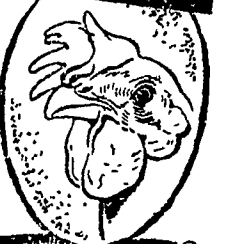
David Kurtz
MORGANTOWN
AT 6-5771

International Harvester
Sales and Service
EPHRATA 733-2283

Profitable Partnership

- GOOD DEKALB STARTED PULLETS
- PLUS GOOD FEED
- PLUS GOOD MANAGEMENT

Make the wise Move— Start With



DEKALB STARTED PULLETS

"DEKALB" is a Registered Brand Name. Numbers are Variety Designation.
Headquarters for DeKalb Pullets
DUTCHMAN FEED MILLS, INC.
Stevens, R. D. 1, Pa.
Phone Ephrata 733-3020