

● **New Holland**

(Continued from Page 2)
by H. D. Matz, Sheridan, and purchased by Paul Zimmerman, Ephrata for \$1,050. Her three day old heifer calf brought \$150.

The grand champion cow in the show was exhibited by John I. Fritz, Lancaster, and purchased by Nathan Stoltzfus, Morgantown, for \$680.

The top 15 cows in the show and sale averaged \$668, and the top 40 cows averaged \$501.

A spokesman for the Sales Stables said the show and sale were the most successful ever conducted by the firm.

The 333 horses at the October 28 sale met a steady market. Riding horses brought \$110-400; driving horses were \$125-400; pony mares \$40-75, and pony geldings \$30-90. Killer horses were 6½ to 7 cents a pound.

The 435 hogs at the October 28 sale sold 25 to 50 cents lower. Retail hogs to local butchers 18.25 to 18.75; grades 1 to 3 went to the packers at 16.60 to 17.25, and heavy-weights brought 15.25-16.25. Sows were 12.50-15.

The 30 shoats on sale brought \$9.50 to \$14.50 per head.

Vealer calves met a steady market at the October 28 sale. There were 113 head in the run. Choice and prime vealers brought 33-38, good and low choice 29-33, standard 25-29, and common 15 to 25.

● **Interstate**

(Continued from Page 1)
ADA has promised to continue the present Lancaster County promotion work.

In addition, the ADA will begin a \$25,000 advertising and promotion campaign for Philadelphia, he said.

Honan cited milk marketing costs and the new federal tax law requiring cooperatives to pay 20 per cent of their patronage refunds in cash to members for the cooperatives request for an additional one-cent boost in assessment.

The cooperative believes that the amount in the reserve account may be adversely affected by the new tax law.

At present, it is estimated that over half the Inter-State membership has signed up for voluntary assessment by the ADA.

Members will be asked to vote on the increased checkoff at Inter-state's annual meeting in Philadelphia next month.

Professional Service



I'M GETTIN' MORE MILK AND FEWER SICK COWS!—WHY NOT YOU TOO?

For Details, Write or Call:
Dr. Scott Heffner, Nutritionist
1269 Lititz Pike, Lancaster
Phone 393-2406

D. H. I. A. Members:
Correct Grain Feeding Meters
for Your Cows Available, \$2.50

Since 1935 . . .
Your Dependable

SALES EVERY TUESDAY



● **4-H Beef Show**

(Continued from Page 1)

be shown before the judges, in breed and weight classes.

A champion and reserve champion of each breed will be named from which the judges will pick the Grand and Reserve Champion of the Round-up. Showmanship will be given to the outstanding youth performing in the show ring.

The community is urged to support this show by attending the morning events and the sale in the afternoon. All baby beef will be sold to the highest bidder at the sale, an opportunity for business people and individuals to purchase premium beef and support this 4-H youth program.

● **Hay Show**

(Continued from Page 1)

alfalfa behind Shenk, and John Yost took a blue ribbon in the field cured alfalfa-grass mixture.

The only other county exhibitor in the win columns was William Arrowsmith, Peach Bottom R1, had a red ribbon and a third place in two classes of field cured mixed hay.

All first, second and third place winners in the district show will receive a free chemical analysis of their samples at the Pennsylvania State University, and will have their entries in the state show in January at the Farm Show building, Harrisburg.

Judge George Berggren, extension agronomist from the Pennsylvania State University said the 129 samples in the show had good quality throughout.

● **Farm Calendar**

(Continued from Page 1)

County teachers of vocational agriculture meet in the Ephrata High School.

Nov. 7 — all day — Business-Farm Day in Lancaster County.

Nov. 7 — 10 a.m. — Meeting for Agronomy Dealers at Hostetter's banquet hall in Mount Joy.

6:45 p.m. — County Holstein breeders' banquet at Hostetter's banquet hall, Mount Joy.

7:30 p.m. — Production Credit Association annual meeting in Lampeter-Strasburg High School.

7:30 p.m. — Watershed meeting at Brunneville fire hall.

8 p.m. — Selanco young Farmers meet in the Selanco High School. Subject, second of a series on farm financing.

Nov. 8 — 6:30 p.m. — Testimonial dinner for Harold McCullough, retiring extension worker, at the Fooder-gong Restaurant, Ephrata Pike.

7:30 p.m. — Boots and Saddles light horse and pony club meets at the Lancaster Riding Club grounds, Lincoln Highway west of Lancaster.

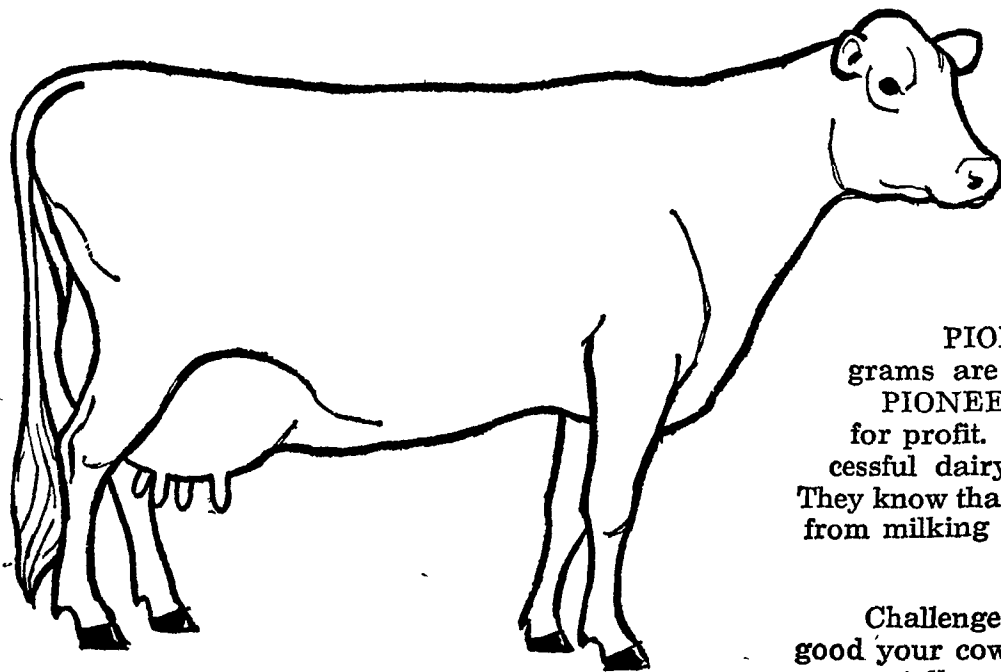
SPECIAL STOCKER & FEEDER SALE

at
VINTAGE SALES STABLES, INC.
Paradise, Pa.

on Saturday Afternoon, November 9, 1:00 P.M.
Weights of cattle ranging from 400 lbs. to 900 lbs.
Kenneth E. Hershey, Mgr.

PUBLIC SALE
FURNITURE & DISHES
Many Antiques
THURSDAY, NOVEMBER 7, 1963
6:00 P.M.
62 North Wolf Street, Manheim, Pa.
J. Omar Landis, Auct.

FACTORY WITHOUT MATERIALS?



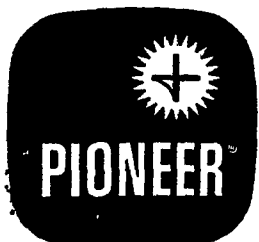
You've been breeding for high production. Through selection and culling you've improved the bred-in milk-producing capability of your herd tremendously. Now you have cows with a profit-making capacity to produce. Yet returns may still be disappointingly small.

Each of your cows may be like a manufacturing plant equipped with the best facilities but lacking sufficient raw materials. In those circumstances, top-level production is impossible.

If your cows are only partly nourished, they can do only a part-way production job. Lacking needed amounts of milk-making nutrients, they just can't produce to the limit of their bred-in potential . . . can't produce those extra tons of milk that mean really satisfactory profits.

PIONEER dairy feeding programs are the answer. Feeding the PIONEER way means managing for profit. That's why so many successful dairymen rely on PIONEER. They know that bigger milk profits come from milking, better-producing cows.

Challenge your herd! Find out how good your cows really are. Stop in and talk over your operation with us soon. Remember . . . there's a PIONEER dairy feeding program to fit your needs.



Joseph M. Good & Sons

Leola — Quarryville