

# FLASH:

TRUCK LOAD OF NEW INTERNATIONAL  
HARVESTER MANURE SPREADERS —  
ALL SIZES AND TYPES

DUE TO ARRIVE IN LITITZ OCT. 26

## FREE - VALUABLE GIFT

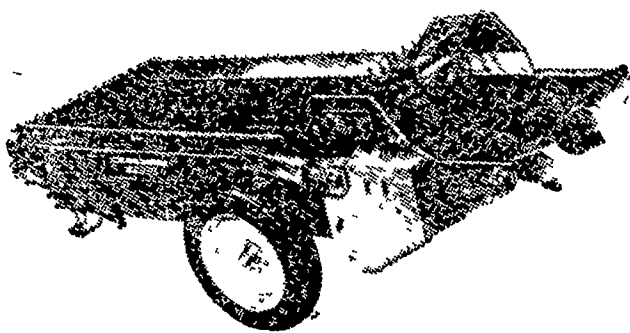
of your choice with each of the

**First 10 Spreaders Purchased**

**Gift Values Up To \$49.95**

- Electric Blanket
- Flint Cutlery Set
- Sunbeam Electric Sauce Pan
- Electric Toaster
- 54 pc. Set of China
- Bathroom Scales
- Electric Mixer

### Check These Quality Features



**\$595.00**

Spreader Not Illustrated

- High speed uniform spreading
- Low and wide for easy loading
- Reinforced treated wood boxes
- Choice of rope or lever control
- Extra heavy duty drive chain
- Rugged frame construction
- Choice of paddle or spiral widespread

NO DOWN PAYMENT —

NO PAYMENT UNTIL APRIL 1st

COME IN OR CALL TODAY — NO SALES TO DEALERS

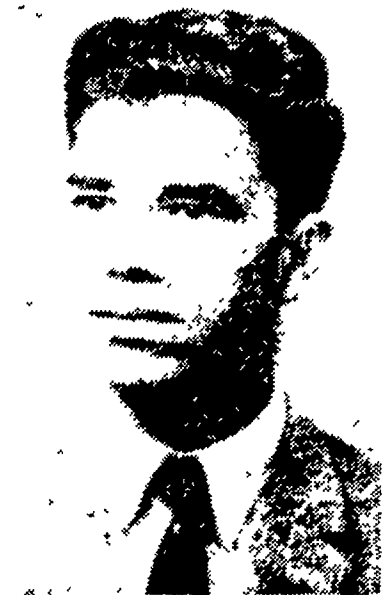
## D. L. DIEM & SONS

Lincoln Ave. and Cedar St., Lititz

Phone 626-2131



CYNTHIA BUCHER



DONALD B. TRIMBLE

### ● Win Trips

(Continued from Page 6)  
attended the Older Members 4-H Conference in West Virginia.

While in high school Donald was a member of the National Honor Society, the Student Council, was awarded the Keystone Farmer Degree by the Future Farmers of America, and was named Chapter Star Farmer in 1960 and 1961.

In his local 4-H Club he was president in 1960, was president of the County 4-H Council in 1961, and was a junior leader three years and assistant leader for a year.

Try A Classified

### Fall Fertilization

Spread, Bulk or Bags

#### Small Grain

5-10-10  
3-12-12  
0-14-14  
0-20-20

#### Hay Topdressing

0-14-14  
0-20-20  
0-15-30

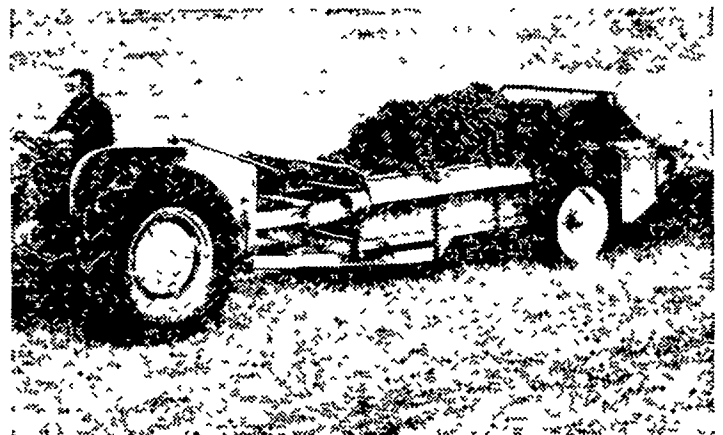
Control Weevil & Spittlebug  
This Fall with Dieldrin or  
Heptachlor with Fertilizer  
or Direct Application

PHONE  
392-4963 — 392-0374

**ORGANIC  
PLANT FOOD CO.**

Groftown Rd.  
Next to the Waterworks

## New 140-bushel spreader



## STRENGTH and QUALITY

where it counts in a Big Spreader

Look under the box, see how knee braces under compression hold box tight at the top. Notice the full-width, heavy-duty axle.

Look at the beaters and paddles. Paddle-centered delivery from the beaters for uniform spreading. Less buildup on paddle shaft.

Look at the front end — recessed raddle chain with full-length idler shaft. Raddle hugs the floor surface, reduces lodging of cobs or frozen material.

Notice the armored sides — protection against loader damage.

See the clutch-protected power line and heavy-duty, roller-driven chain.

The Model 140 PTO spreader is quality-built for year-round convenient performance. Let us show you.

Finance for profit Ask us about Allis-Chalmers' time payment plans

**ALLIS-CHALMERS**  
SALES & SERVICE



**N. G. Myers & Son**  
Rheems, Pa.

**Nissley Farm Service**  
Washington Boro, Pa.

**L. H. Brubaker**  
Lancaster, Pa.

**Allen H. Matz  
Farm Equipment**  
New Holland, Pa.

**Grumelli Farm Service**  
Quarryville, Pa.

**L. H. Brubaker**  
Lititz, Pa.

**Lausch Bros. Equipment**  
Stevens, Pa.