



INSPECTING THE WINNING SAMPLE of honey at the county 4-H club roundup Thursday night are, left to right, Robert Landis, president of the county Honey Producers; Daniel Hershey, Annette Long, and Clyde Hahn. The three 4-H members placed one, two, and three, respectively, in the club roundup. L. F. Photo.

● **Honey Producers**

(Continued from Page 1)  
 hived the other two. He scored 91.6 out of a possible 100 points on his project record. In second place was Annette Long, Litz R3, the daughter of Mr and Mrs Melvin Long. Other exhibit placings were as follows, 3. Clyde Hahn, Columbia R1, 4 William Houser, Lampeter, 5 Lloyd Hahn, Columbia R1, and 6 Albert Henry, New Providence R1.

Members of the Lancaster County Honey Producers Association voted to contact the county Fruit Growers to arrange for a combined banquet. A committee will be appointed by president, Robert Landis.

William Clarke, extension Apriary specialist from the Pennsylvania State University, said he had inspected county bees during the afternoon and found that the honey flow this year was only fair. He said the drought had cut the honey flow somewhat, but not too severely. Good managers will still average 60 to 80 pounds per colony, he estimated.

Clarke told the beekeepers

that some feeding will have to be done, but that supers should be removed now so that the bees will store aster honey, now being collected, will be stored in the brood chamber.

**4-H Wildlife Club Sees Slides**

Members of the county 4-H wildlife club saw slides taken on their recent trip to the mountains at the Thursday night meeting in the home of Mailene Gentzler, New Holland Pike, Lancaster.

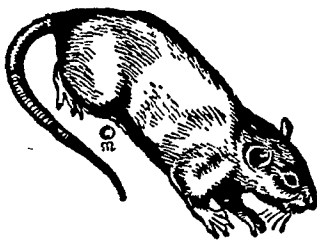
Roll call was answered by members reporting on the wildlife they had seen during the last month. Harold DeLong, Peach Bottom R1, gave a demonstration on the proper method of trapping foxes.

The next meeting will be on November 20 at the home of Robert Ulrich, Penryn.

Armed with newest weapons and new detection methods, the "new" Navy can move faster, stay at sea longer, hit harder, and reach out farther than ever before.

RATS!

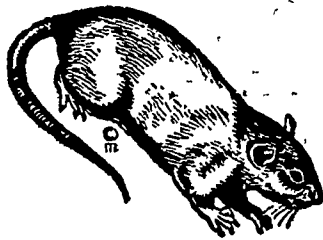
RATS!



**RATS!**

"They fought the dogs, and killed the cats, and bit the babies in the cradles, and ate the cheeses out of the vats, and licked the soup from the cook's own ladles."

BUT IN 1963 THE PIED PIPER WOULD BE UNEMPLOYED AND THE RATS WOULD BE DEPRIVED OF A POPULATION EXPLOSION - WHEREVER WIDE AWAKE FARMERS USE



**EASTERN STATES DUOCIDE RAT CHUCKS**

- Pre-Packaged Individual 3-ounce Units
- Safe to Handle
- Simple to Bait
- Moisture Resistant
- Prevents Deterioration
- Less Waste



Eastern States Farmers Exchange, Inc.



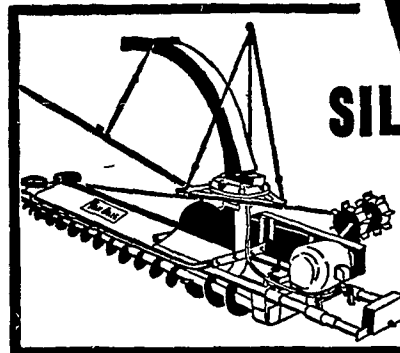
1963 H & N "Nick Chicks" are improved models of the H & N "Nick Chicks" which earned an award\* for highest income (\$3.12 per hen housed) \*USDA summary report ARS 44-79-2.

Day Old and Started Pullets

**FLORIN FARMS, INC.**

Mount Joy, Pa. RFD #1, 653-9891

**Complete automatic feeding for DAIRY COWS and CATTLE!**

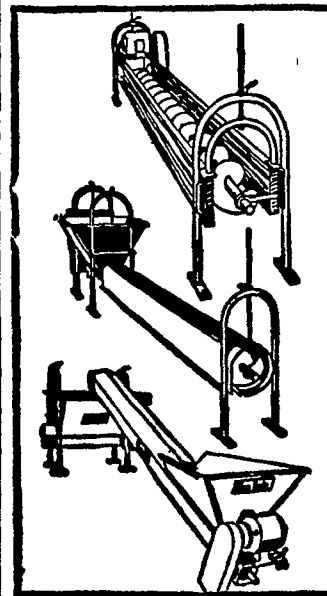


**VanDale SILO UNLOADERS**

Double augers deliver more silage per minute even when silage is deeply frozen . . . and at a lower operating cost. Patented V-paddle impellers throw . . . not blow . . . silage down chute. Adjustable drive hubs give positive traction in all types of silage.

Three-point suspension keeps unloader level at all times.

**Plus a complete line of bunk feeders to meet your exact needs**



**Straight-out Auger Feeder**

With VanDale units you can custom build the bunk feeding set-up to fit your needs. Drive section includes hopper, drive assembly and 10' high capacity 8" auger. Additional auger sections are in 10' units and are easily coupled.

**Feed-R-Flo Bunk Feeder**

The new, all-metal complete feeder. High capacity 8" auger rotates within tube. Gives all-weather protection, even feed distribution, and lower operating cost.

**Conveyor Trough**

An important link in automatic feeding. Positioned below silo chute, the VanDale conveyor trough carries the silage to the bunk feeder. Primary section includes hopper, drive assembly, and 10', 8" auger. Additional 10' auger sections may be added.

See us for modern automatic feeding equipment

**CALEB M. WENGER**

R. D. 1 Drumore Center KI 8-2116 Quarryville, Pa.