

# Price Is Still Down

Live broiler prices continued about steady at the October 3 auction in the Lancaster Poultry Center. A total of 66,375 broilers were sold at prices ranging from 14.3 to 14.7 for a sale average of 14.45. The average for the previous week's sales was 14.53.

The top lot of broilers was 1,000 White Vantress at nine weeks, consigned by Philhaven Hospital and purchased by John N. Thomas. One lot of 800 pullets at 9 weeks, three days brought 16.0. A lot of 1,800 leghorn fowl brought 8.6.

Only one lot failed to sell; this a lot of 3,400 White Vantress Cross Pullets at 14 weeks was bid to 19.1.

Following is the complete sale report with lot number, seller, grower in parenthesis, amount and breed, age in weeks and days, buyer and price.

CODE: WV-White Vantress, P-Pullets, L-F-Leghorn Fowl, CX-Cornish Cross, IR-Indian River, MCX-Moore's Chesty Cross.

1. Philhaven Hosp. Farm, 1000 WV, 9-0, John N. Thomas, 14.7; 2. Miller & Bushong (Earl Newcomer), 800 WVP, 9-3, W. C. Mellinger & Son, 16.0; 3. Robert E. Martin, 1800 L-F, V. J. Koser Co. Inc. 8.6; 4. D. E. Horn & Co. (Amos Funk), 11,000 WV, 9-2, Starr Poultry, 14.5; 5. Same, 14.3.
6. Same, 8000 WV, 9-2,

7. Daniel K. Good, 14.4; 7. Same, (Nevin Finchbaugh), 5000 WV, 9-2, Daniel K. Good, 14.4; 8. Robert Noll, 2475 CX, 9-2, Carl B. Risser, 14.5; 9. Paul Brubaker, 3400 WVXP 14-0, NO SALE, 19.1 bid; 10. M&B (Harold E. Rohrer) 4500 IR, 8-2, Starr Poultry, 14.5.
11. Same, 5900 MCX, 8-2, Starr Poultry, 14.5; 12. Same, 6000 WV, 8-2, Carl B. Risser, 14.5; 13. Same (William D. Stong), 11,500 WV, 8-3, Starr Poultry, 14.5.

## ● Lancaster

(Continued from Page 2)  
800 lbs. 22.00-24.00, Good 21.00-22.50, Medium 600-800 lbs. 19.00-21.50, Good and Choice 400-500 lbs. 22.00-26.00, Medium 19.50-22.50.

CALVES: 700. Compared with 588 head last week. Vealers steady. Trading moderately active. Choice and Prime grade vealers 32.00-33.00, Good 27.00-32.00, Standard 23.00-27.00, Utility 19.00-23.00.

HOGS: 1400. Compared with 1331 head last week. Barrows and gilts steady. Sows steady.

Barrows and gilts: U.S. 1-2 grade 190-225 lbs. 17.00-17.75, No. 1 grade 190-225 lbs. 17.75-18.50, U.S. 1-3 grade 190-240 lbs. 16.50-17.00, 2-3 grade 230-260 lbs. 16.00-16.50. Sows: U.S. 1-3 grade 300-450 lbs. 13.50-15.00, 2-3 grade 450-600 lbs. 12.00-13.50.

SHEEP: 400. Compared with 385 head last week. Trading moderately active.

## ● Delmarva

# Prices Down; Demand Is Dull

Delmarva reported prices continuing to decline nearly a quarter cent during the 24 hour period ending 10:30 Friday morning. Demand was dull for light auction offerings.

Prices ranged 13.6 to 14.5 at farms for 1,103,300 head reported sold during the period. Reported purchases included 462,500 head sold at Thursday's auction in Selbyville, Del.

Ready to cook demand increased slightly to a fair position. Estimated slaughter by eastern shore processors for the weekend was 858,000 head compared to the 736,000 head last weekend.

The Delmarva broiler-feed ratio for the week ending Sept. 27 was 2.8. Broilers averaged 14.35 per pound and mash cost the grower \$101.40 per ton. The ratio for the comparable week a year ago was 3.6 when broilers sold for 16.84 and mash cost \$94.69 per ton.

## ● Chicago

(Continued from Page 2)  
bulls and feeders unchanged.

Slaughter Steers: high choice and prime 1075-1325 lbs. closed at 24.50-25.25. Late bulk good 900-1250 lbs. 22.50-23.50. Standard and low good 21-22.25.

Feeders: Three loads mostly good 750-850 lb. steers 22-22.50. Load medium and good 587 lb. heifers 21.25.

# Weekly New York Egg Mkt.

From Monday, Sept. 30th to Friday, Oct 1th

	Mon.	Tues.	Wed.	Thurs.	Fri.
<b>WHITE</b>					
Ex.					
Fcy. Hwyts.	43 1/2	43	42 1/2	41 1/2	41 1/2
Fcy. Hywts.	42	41-41 1/2	41-41 1/2	41	40-41
Fcy. Med.	33	33	33	32	32
No 1 Med.	33	33	33	32	32
Pullets	25	25	25	24 1/2-25	24 1/2-25
Peewees	18 1/2	18 1/2	18 1/2	18 1/2	18 1/2
<b>BROWN</b>					
Ex.					
Fcy. Hywts.	43	43	42	40 1/2-41	41
Fcy. Hywts.	42	42	41	40 1/2	40 1/2
Fcy. Med.	35	35	33	31	31
Pullets	25	25	25	25	25
Peewees	18 1/2	18 1/2	18 1/2	18 1/2	18 1/2
<b>MIXED</b>					
Fcy. Hywts.	41	41	41	40 1/2	40 1/2
No 1 Med.	33	33	33	31	31
Pullets	24	24	24	24	24
Standards	37	37	37	36	35-36
Checks	29	29	28	28	28

TREND Market still showing some surpluses but undertone improved in several instances

Copyrighted 1963 By Urner-Barry Co.

## ● Vintage

(Continued from Page 2)  
ers 31.00-36.00, Good 29.00-32.00, Standard 24.00-29.00, Utility 18.00-24.00.

HOGS: 190. Barrows and gilts steady to 50 lower. U.S. 1-2 grade 190-228 lb. Barrows and gilts 17.10-17.35, including Lots No. 1, at 17.35 Few

lots 2-3 grade 223-228 lbs. 16.75. No. 1 grade 173-188 lbs. Choice and prime vealers were 16.60-16.85, No. 3 grade 260-302 lbs. 15.25-16.10, 2 lots 29-33, standard 25-29, and cull Choice 35 lbs. Feeder Pigs 5. and common 15-25.

75-6.60 per head.

SHEEP: 24. Good grade wooled slaughter lambs 55-90 lbs. 16.50-19.50.

## ● New Holland

(Continued from Page 2)  
1710 to 17.50. Sows sold for 13-15.50.

The 114 calves at the Sept. 30 sale sold steady to strong. 30 sale sold steady to strong. Choice and prime vealers were 33-38, good and low choice 33-38, good and low choice 302 lbs. 15.25-16.10, 2 lots 29-33, standard 25-29, and cull Choice 35 lbs. Feeder Pigs 5. and common 15-25.



# 25¢ OFF ON STERLING BLUSALT

REGULAR OR MEDICATED WITH EDDI

Sterling Blusalt contains the seven trace minerals essential to good herd health — manganese, iron, sulfate sulfur, copper, cobalt, iodine and zinc — all perfectly blended with high-quality salt, the ideal natural carrier. Used as recommended, Blusalt gives full-time protection against trace mineral deficiencies. To sum up: it helps provide the kind of herd health that puts a plus in your milk check and market weights. With Sterling Blusalt you've got it in the bag!

**25¢ TAKE THIS COUPON TO YOUR FEED DEALER 25¢**

**SAVE 25¢ ON STERLING BLUSALT**  
— regular or medicated with EDDI — when you buy one 100-lb. bag or two 50-lb. bags or two 50-lb. blocks

**TO DEALER:** Please allow 25¢ off your regular retail price of a 100-lb. bag of Sterling Blusalt — regular or medicated with EDDI — (or two 50-lb. bags or two 50-lb. blocks) when this coupon is presented to you by a farmer customer.

International Salt Company sales representative will redeem for 25¢ or mail to Clarks Summit, Pa.

Invoices providing sufficient purchase of product to cover coupons presented must be shown on request.

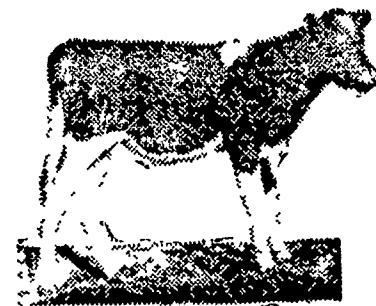
Void unless acquired in the manner above or where prohibited, taxed or restricted.

Offer good only in Lancaster County, Pa. Limit one coupon per customer. Any sales tax payable by customer. Cash value 1/20th of 1¢.

OFFER ENDS DEC. 1, 1963

## DAIRYMEN

# Get Your Calves Off To A Good Start With WIRTHMORE TWIN-MIX CALF FEED



The popular calf grain especially designed for feeding from the first week to 4-5 months of age. Twin-Mix is coarse and extremely palatable. This encourages early consumption and speeds growth. Twin-Mix saves money by helping to develop the rumen early, allowing the calf to make maximum use of roughage.

**J. K. Stauffer & Son**  
Lawn and Bellaire  
665-8121 — 367-2321

**Clem-E. Hooper**  
Intercourse  
768-8431

**Paul M. Ressler & Son**  
Paradise 687-6202