



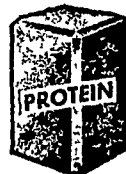
NEW HOLLAND FAIR Beef champion and reserve champion are shown with their owners. The Angus of Miss Rosemary Nolt was judged grand champion; Leon Weaver's Hereford was the runner up.

● **Beef Show**

(Continued from Page 1)
 purchased by H. D. Matz, of Ephrata, for 40 cents a pound. All steers in the show averaged 29.74 per pound and averaged 997 pounds. Club members collected a total of \$6,679.98 for their labors. Following are placings in the show:

- HEREFORDS**
 1, Leon Weaver, New Holland R1 (reserve grand champion); 2, Robert Grumbine, 2480 Horseshoe Rd; 3, Bareville; 9, Ruth Ann High, William Shirk, Goodville; 4, Bareville, 10, Roy Musser, Larry Weaver, New Holland East Earl R1, 11, Carl Campbell, 2554 Creek Hill Rd; 6, Marie Weaver, East Earl R1; 13, Grumbine, 2480 Horseshoe Rd; 7, Candy Myer, New Holland R1; 8, Dale Groff, Bareville; 9, James Musser, East Earl R1; 10, Verna Nolt, Bareville.
- ANGUS**
 1, Rosemary Nolt, Bareville (grand champion); 2, William Fisher, East Earl R1; Richard Leaman, 2554 Creek Hill Rd., 4, Robert Fisher, East Earl R1; 5, Terry Myer, New Holland R1; 6, Fred Nolt, New Holland; 7, John Campbell, New Holland, 8, Janet Groff, 2480 Horseshoe Rd; 9, Ruth Ann High, William Shirk, Goodville; 4, Bareville, 10, Roy Musser, Larry Weaver, New Holland East Earl R1, 11, Carl Campbell, 2554 Creek Hill Rd; 6, Marie Weaver, East Earl R1; 13, Grumbine, 2480 Horseshoe Rd; 7, Candy Myer, New Holland R1; 8, Dale Groff, Bareville; 9, James Musser, East Earl R1; 10, Verna Nolt, Bareville.

- FITTING**
 1, Harold Leaman; 2, Leon Weaver; 3, Terry Myer.
- SHOWMANSHIP**
 1, Leon Weaver; 2, Rosemary Nolt; 3, Larry Weaver.



For INFORMATION on
PROTEIN BLOCKS
 AND
MINERAL BLOCKS
 See Your Local Feed Dealer or Write
 O. W. MEYER LABS., NAPOLEON, OHIO



Fall Fertilization
 Spread, Bulk or Bags
Small Grain
 5-10-10
 3-12-12
 0-14-14
 0-20-20

Hay Topdressing
 0-14-14
 0-20-20
 0-15-30

Control Weevil & Spittlebug
 This Fall with Dieldrin or
 Heptachlor with Fertilizer
 or Direct Application
 PHONE
 392-4963 — 392-0374

**ORGANIC
 PLANT FOOD CO.**
 Groftown Rd.
 Next to the Waterworks



1963 H & N "Nick Chicks" are improved models of the H & N "Nick Chicks" which earned an award* for highest income (\$3.12 per hen housed) *USDA summary report ARS 44-79-2.

Day Old and Started Pullets

FLORIN FARMS, INC.

Mount Joy, Pa. RFD #1, 653-9891

Grow STRONG, THRIFTY CALVES on Home Grown Grain



and WAYNE CALF SUPPLEMENT

Here's how to supply calves with all of the body-building nutrients they need and still feed them your home grown grains.

Wayne Calf Supplement (pellets) contains vitamins, minerals, proteins and an antibiotic to properly supplement your home grown grains. Wayne Calf Supplement will help you grow strong, thrifty calves at less cost.

It Pays to Feed Wayne



GRUBB SUPPLY CO.
 Elizabethtown

HERSHEY BROS.
 Reinholds

C. E. SAUDER & SONS
 R. D. 1, East Earl

H. M. STAUFFER & SONS, INC.
 Witmer - Ronks - Leola

ROHRER'S MILLS
 R. D. 1, Ronks

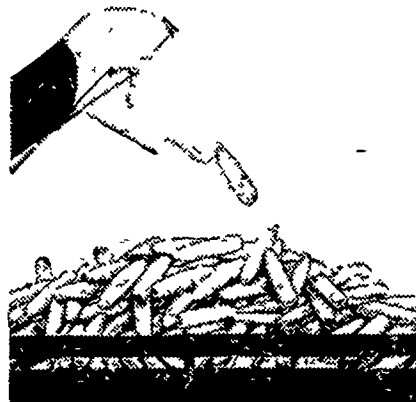
MOUNTVILLE FEED SERVICE
 R. D. 2, Columbia

J. K. STAUFFER & SON
 Lawn and Bellaire

DUTCHMAN FEED MILLS, INC.
 R. D. 1, Stevens

POWL'S FEED SERVICE
 R. D. 1, Quarryville
 R. D. 2, Peach Bottom

MILLERSVILLE SUPPLY CO.
 Millersville



NEW ALLIS-CHALMERS 190

the
2-row picker for steady work in heavy yields

New picking power for Allis-Chalmers D-19, D-17, WD-45 and WD Tractors!

The new Allis-Chalmers Model 190 is engineered to boost corn-handling ability where it counts:

3 GATHERING CHAINS PER ROW — to keep heavy stalks and foliage moving.

NEW-DESIGN SNAPPING ROLL SECTIONS — for more aggressive action.

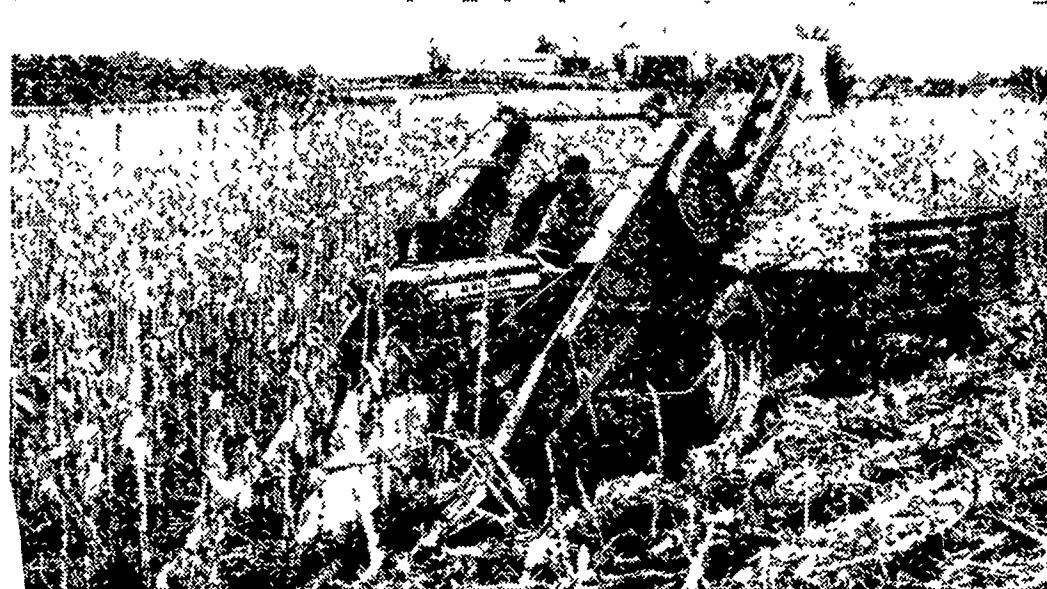
NEW-ROTARY FEEDERS — keep big crop volume moving uniformly from snapping rolls to front elevator.

NEW LARGE HOPPER — for uniform delivery to wagon elevator.

NEW FAN LOCATION — well to the rear, mounted on elevator, for sure cleaning.

You GET the corn — with Allis-Chalmers long, sloping gathering snouts . . . adjustable stripper plates . . . fast, clean, rubber-on-rubber husking . . . shelled corn savers directly under husking beds.

Ask us about Allis-Chalmers' Time Payment Plans.



ALLIS-CHALMERS

SALES & SERVICE



L. H. Brubaker
 Lancaster, Pa.

Nissley Farm Service
 Washington Borg, Pa.

Grumelli Farm Service
 Quarryville, Pa.

N. G. Myers & Son
 Rheems, Pa.

Allen H. Matz Farm Equipment
 New Holland, Pa.

L. H. Brubaker
 Lititz, Pa.

Lausch Bros. Equipment
 Stevens, Pa.