

**Soil Conservation**  
(Continued from Page 1)

shed to secure the orderly transfer of land acquired under the program from its original use to its new use and that agricultural use of lands under appropriate arrangements be allowed of suitable lands during the time between acquisition and eventual development.

In other business, the directors scheduled a series of watershed meetings during October and November. On October 8 at 7:30 p.m. the first of the meetings will be held at Sensenig's Super Thrift Market on Rt. 322 west of Blue Ball. The second will be held on October 15 at Churchtown, and the third will be held at Brickerville on November 7.

John Kitch, service forester reported that a total of \$1825 was paid to fire wardens who hired help to fight forest fires along the Susquehanna river on July 26-27.

The figure does not include any damages for the 60 to 75 acres of woodland burned or charges of the Columbia and Conestoga fire companies which were paid by the Pennsylvania Railroad Company.

According to Kitch, the railroad company will be billed for the \$1825 since it has been determined that fire along 40 miles of track from Cresswell to the Maryland state line was caused by sparks flying from an open railroad car hauling material to a pulp mill.

Kitch also reported that pulpwood users have agreed to purchase wood from Chestnut Oak trees which are dying in southern Lancaster County. However, he said, since pulpwood is purchased by weight and the dead trees are not very heavy, wood cutters are hesitant to harvest the trees for this purpose.

Directors approved nine applications for tree conservation plans on 450 acres. Plans were approved for Fritz K.

**County Youths Win Points At Eastern States**

Stanley Graver, 525 Beaver Valley Pike, was second high individual in FFA dairy cattle judging last week end at the Eastern States Exposition in West Springfield, Mass.

Kroeck, Lititz R4, on 19 acres and 30 acres in Warwick Township; Vincent J. Fauci, Lititz R4, 37 acres in Warwick Twp; Earl L. Martin, Narvon R1, 74 acres in Caenarvon Twp; Harvey Z. Sensenig, East Earl R1, 54 acres in East Earl Twp; Amos N. Hoover, Ephrata R2, 65 acres in West Earl Twp; Aaron Weaver, Ephrata R3, 90 acres in Ephrata Twp; Paul Eberly, East Earl R1, 60 acres in East Earl Twp; and W. Thomas Fogie, Marietta R1, 21 acres in East Donegal Twp.

**Freeman**

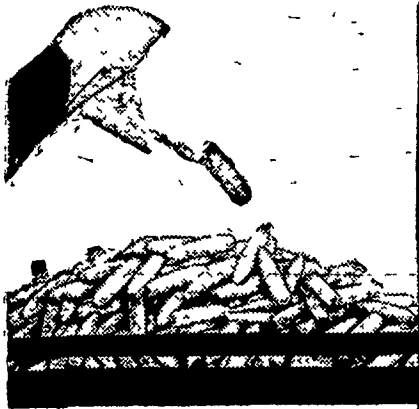
(Continued from Page 1)

Oct. 1, in the Zembo Mosque. Similar meetings to report to farmers and "to listen to what they are saying and thinking" were announced Sept. 4 for communities in 11 other States selected geographically to reach nearly every major agricultural area in the Nation during the next two months.

The first "Report and Review" was Sept 8 at Worthington, Minn. About 1,600 farmers and farm women met with Secretary Freeman there.

"I look forward to the other meetings with great pleasure and expectation," Secretary Freeman said. "When you are seeking a practical program, as I am, there is no substitute for going directly to people on the land."

State teams for competition in the 11 state events were chosen during FFA week last June at the Pennsylvania State University.



**NEW ALLIS-CHALMERS 190**

**the 2-row picker for steady work in heavy yields**

New picking power for Allis-Chalmers D-19, D-17, WD-45 and WD Tractors!

The new Allis-Chalmers Model 190 is engineered to boost corn-handling ability where it counts: **3 GATHERING CHAINS PER ROW** — to keep heavy stalks and foliage moving.

**NEW-DESIGN SNAPPING ROLL SECTIONS** — for more aggressive action.

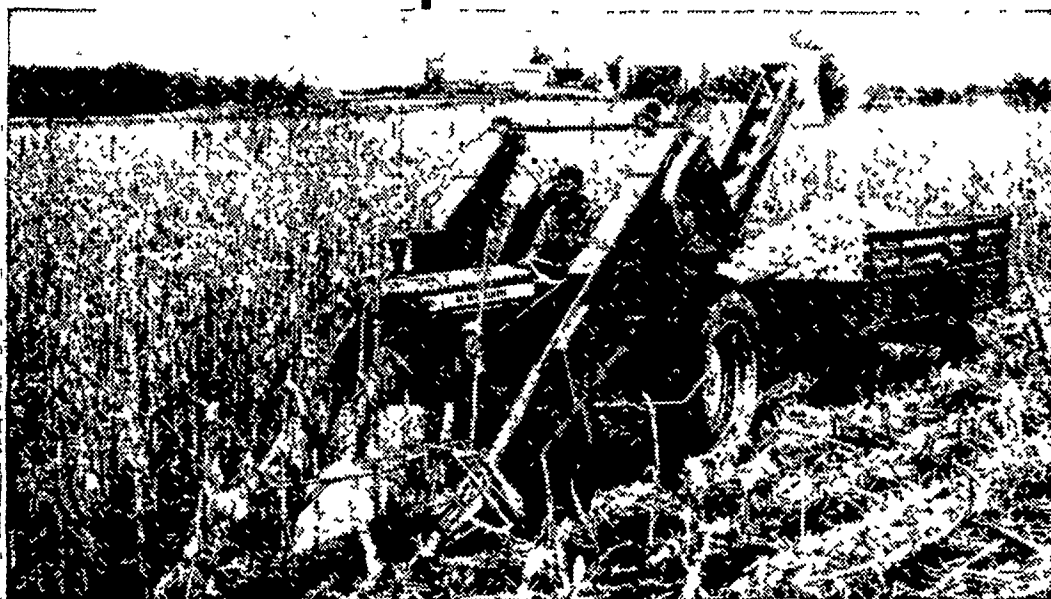
**NEW ROTARY FEEDERS** — keep big crop volume moving uniformly from snapping rolls to front elevator.

**NEW LARGE HOPPER** — for uniform delivery to wagon elevator.

**NEW FAN LOCATION** — well to the rear, mounted on elevator, for sure cleaning.

You GET the corn — with Allis-Chalmers long, sloping gathering snouts . . . adjustable stripper plates . . . fast, clean, rubber-on-rubber husking . . . shelled corn savers directly under husking beds.

Ask us about Allis-Chalmers' Time Payment Plans.



**ALLIS-CHALMERS** SALES & SERVICE

- L. H. Brubaker  
Lancaster, Pa.
- Nissley Farm Service  
Washington Boro, Pa.
- N. G. Myers & Son  
Rheems, Pa.
- Grumelli Farm Service  
Quarryville, Pa.
- Allen H. Matz  
Farm Equipment  
New Holland, Pa.
- L. H. Brubaker  
Lititz, Pa.
- Lausch-Bros. Equipment  
Stevens, Pa.

**CHECKERBOARD service bulletin**



**HOGS ON SLATS... latest advancement in Pig Parlor plan for finishing hogs**

Recently you've read and heard how Cornbelt hog raisers are growing out hogs in confinement on slat floors. Slat floor operations, with manure lagoons beneath, mark the latest advancement in the Pig Parlor plan of hog production, introduced by Purina over 6 years ago.

Purina Research has conducted exhaustive tests to weigh advantages and disadvantages of slat floors. We now have their recommendations. Slat floor units seem to have many advantages. Hogs on slats are more apt to suffer from extremes of cold or heat than those on concrete . . . but labor-saving advantages are obvious. Manure clean-out, a major problem in confinement rearing, is practically eliminated.

So let's talk about ways we can make hog raising in this area pay off. We'll be happy to share latest data from Purina Research. Drop by our Store with the Checkerboard Sign and we'll visit about a program for efficient, year-round hog production.

- James High  
Gordonville
- John B. Kurtz  
Cedar Lane
- Wenger's Feed Mill, Inc.  
Rheems
- S. H. Hiestand & Co.  
Salunga
- Ira B. Landis  
Valley Road, Lancaster
- J. H. Reitz & Son, Inc.  
Lititz
- John B. Kurtz  
Ephrata
- John J. Hess, II  
Intercourse - New Providence
- Whiteside & Weicksel  
Kirkwood
- Warren Sickman  
Pequea
- John J. Hess  
Kinzers - Vintage