

## County 4-H Dairy Showmen Take Three Breed Championships Here

Lancaster County 4-H showmen swept the Guernsey and Ayrshire breed judging and won a grand championship in Brown Swiss and a reserve grand championship in Jersey competition at the 18th annual district show Thursday at the Guernsey sales pavilion, Lincoln Highway, east of Lancaster.

Sue Mumma, daughter of Mr and Mrs. Harry Mumma, Manheim R1, showed her three year old Guernsey cow to the grand championship over the senior yearling of her sister Mary Ellen Sue also had the runnerup junior champion in the senior yearling class Lee Sharp, Landisville, showed the first place senior calf, and Peter Witmer, Willow Street R2, had the first place senior calf.

The aged cow o R Edwin Harnish, Christiana R1, took the Ayrshire rosette, while Judy Flory, Lititz R2, exhibited the reserve grand champion, a two year old Sandra Eshelman, Elizabethtown R1, took first place in the senior calf class, while the junior yearling competition was topped by James Esbenshade, Quarryville R2.

Donald Trimble, Quarryville R1, took the Brown Swiss honors with his senior yearling Gary Myers had the top senior calf.

Only two county showmen took a first place in Holstein competition John Bartsch, Ephrata, showed the first place senior calf, and James Kettering, Lititz R3, had the top senior yearling. The grand champion went to Glenn Miller of York County.

The aged cow of Marian Jane Herr, Holtwood R1, took the runnerup spot in Jersey judging behind the entry of Elizabeth Herr of Chester County.

There were no county entries in Milking shorthorn competition.

Placing the Guerneys, Ayrshires, Milking Shorthorn, and Brown Swiss entries was Wade White, Director of member relations of Country Belle Dairies, Pittsburgh Jack Fairchilds, official classifier of the Holstein-Friesian association placed the Holsteins and Jersey. Following are the first five placings:

### HOLSTEIN

Junior Calf — 1. Terry Brubaker, Dauphin, 2. Marvin Benshore, York, 3. Nannette Stauffer, Ephrata R1, 4. James Peeple, Chester, 5. William Neagley, Dauphin

Senior Calf — 1. John Bartsch, Ephrata; 2. Kathryn B.

(Continued on Page 12)

## Corn, Hay Crop Estimates Up

HARRISBURG — A corn crop of 567 million bushels — 29 per cent better than last year — was forecast today for the state by the Pennsylvania Crop Reporting Service. This would be 3 per cent above the 1957-61 average.

At the same time PCRS predicted total hay production of 3.2 million tons, 28 per cent above the 1962 yield.

The 1963 corn estimate, based on August 1 conditions, is down 9 per cent from the forecast of a month earlier. Dry weather in July lowered the expected yield per acre from 67 to 61 bushels.

If realized, the 61-bushel per acre yield would be 9 per cent above the drought year of 1962.

## County Native Is Appointed By Extension

John Wiley Weaver, Quarryville R1, has been appointed assistant Schuylkill county agent on the Cooperative Extension Service staff of The Pennsylvania State University, starting Sept. 1.



JOHN WEAVER

Weaver, son of Ola W Weaver, R.D.1, Quarryville, is a graduate of Solanco high school, and Penn State, where he earned a bachelor of science degree in dairy science this year.

While in college he was a member of the Dairy Science Club, Outing Club, and participated in the Little International and Dairy Exposition on campus. He was awarded a Keystone Farmer Degree by the Future Farmers of America.

In Schuylkill county Mr. Weaver will be associated with County Agent C. I. Robertson, and Associate Agent Edgar C. Sobers, Jr., with offices in the Courthouse, Pottsville.

## Vegetable Growers Field Day To Feature New Plant Material

A Field Day for commercial vegetable growers, home gardeners and other interested individuals will be held at the Horticultural Research Farm, The Pennsylvania State University on Tuesday, September 10. Paul Rowl, Strasburg R1, president of the state vegetable growers association, announced this week.

Growers will have an opportunity to observe the vegetable research work at Penn State. Staff members who are conducting the research will explain the projects and answer questions.

One of the highlights of the day will be the demonstration of a trans-planter mulcher for applying plastic mulch and setting plants in one operation. "This should be of interest to all growers," says James Dutt, extension vegetable specialist.

Field Days of this type are always interesting. Growers will be able to gain a greater appreciation for the importance of research, after they have had a chance to see how the work is being conducted. We feel certain that all vegetable growers should find this event profitable, as well as interesting, Dutt said.

The program is scheduled to begin at 9 a.m. on the PSU Horticulture research farm which is on Route 45, five miles west of Pine Grove Mills, Center County.

Growers will also have an opportunity to observe tomato, pepper, and eggplant breeding experiments, cabbage and broccoli breeding material,

sweet corn varieties, plant nutrition plots, and chemical weed control on tomatoes and other vegetable crops.

## N. Holland Fair Schedules Dates

The Board of Directors of the New Holland Farmers Day Association has announced that the 32nd Annual Farmers Fair will be held October 2, 3, 4 and 5.

President S. O Zimmerman had charge of the business meeting when it was decided again to hold Tobacco, Corn and Hay Show at this year's fair. Carl B. Weaver is the director in charge of arrangements.

Zimmerman, announced this week that the premium list for the Farmers Fair is more complete and offers better prize money than ever before.

The 32nd Anniversary of the Farmers Fair will be observed on Wednesday, Thursday, Friday and Saturday, October 2, 3, 4 and 5. The Association will exceed its high previous prize record this year.

The directors are presently compiling a Premium List Booklet. A progress report was made by the publicity committee.

More than half of the living Nobel Prize winners who went to college in the United States earned degrees at land-grant universities.



FOR THE QUALITY THAT MEANS

# Bigger Yields

"See your Hoffman Seed Man for heavy yielding Alfalfa for Fall Seedings:

- 10-19 Brand
- 9-19 Brand
- Buffalo Certified
- Cody Certified
- Vernal Certified
- Ranger Certified

All Hoffman Alfalfas are Pre-Inoculated. Farmers Choice Brand and Climax Timothy also available now"



PROTECT FEED DOLLARS WITH **PURINA** HEALTH AIDS



There are lots of pluses

### in PURINA PIG-PLUS!

Pig-Plus is a vitamin-mineral-antibiotic supplement that adds extra nutrients to hog rations, especially during stress periods.

• Pig-Plus can get pigs off to a fast start. • It helps keep hard-working boars in condi-

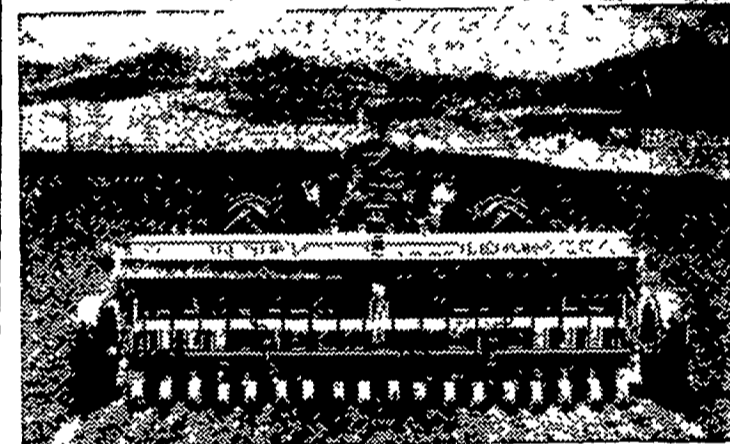
tion. • It gives a lift to hogs following disease. • Pig-Plus conditions pigs for shows and sales.

Ask us to fortify your hog rations with Pig-Plus next time you order Chows.

- James High  
Gordonville
- Wenger's Feed Mill, Inc.  
Rheems
- Ira B. Landis  
Valley Road, Lancaster
- John B. Kurtz  
Ephrata
- Whiteside & Weicksel  
Kirkwood

- John B. Kurtz  
Cedar Lane
- S. H. Hiestand & Co.  
Salunga
- J. H. Reitz & Son, Inc.  
Lititz
- John J. Hess, II  
Intercourse - New Providence
- Warren Sickman  
Pequea

John J. Hess  
Kinzers - Vintago



## New! EXPANDED! ALL-CROP Drill Line

Drill more acres a day and get a good stand — whatever your farming method. With ALL-CROP drills, torsion spring control assures even depth. Zero pressure press wheels are available to give proper seed contact with soil.

Standard drills have divided hopper . . . feature separate band placement of seed and fertilizer. Grass seed attachment, too!

New models include plain drills with oversize, single-bin hoppers that hold up to 19 bushels of grain . . . require fewer stops for refilling. One 16-run model has 10-inch disc spacings . . . others 7-inch.

Come in . . . let us show you an ALL-CROP drill . . . made to fit your farm.

ALL-CROP is an Allis-Chalmers trademark.

**ALLIS-CHALMERS** SALES AND SERVICE

- Nissley Farm Service  
Washington Boro, Pa.
- Grumelli Farm Service  
Quarryville, Pa.
- L. H. Brubaker  
Lititz, Pa.
- N. G. Myers & Son  
Rheems, Pa.
- Allen H. Matz  
Farm Equipment  
New Holland, Pa.
- L. H. Brubaker  
Lancaster, Pa.

Lausch Bros. Equipment  
Stevens, Pa.