

**4-H Judging**

(Continued from Page 1)  
Among 19 teams, the county vegetable team was sixth but placed David Denlinger, two-time Keystone Award winner, on the top spot.  
Judy Warfel, Conestoga R1,

placed second place in flower judging.  
Cynthia Bucher, Lititz R2, and Virginia Wivell, Columbia R1, came in with first place in poultry foods demonstration. The Tractor demonstration (Continued on Page 10)



LANCASTER COUNTY'S 4-H DAIRY JUDGING TEAM returned to the county from Penn State this week with a blue ribbon. They are, left to right, Kenneth Rutt, Quarryville R2; Donald Bollinger, Manheim R1; Elvin Hess, Jr., Strasburg R1, adult leader; Roy Breneman, Willow Street R1; Elvin Shelly, Manheim R1, and Donald Trimble, Quarryville R1, junior leader and assistant coach of the team. L. F. Photo.



1963 H & N "Nick Chicks" are improved models of the H & N "Nick Chicks" which earned an award\* for highest income (\$3.12 per hen housed) \*USDA summary report ARS 44-79-2.

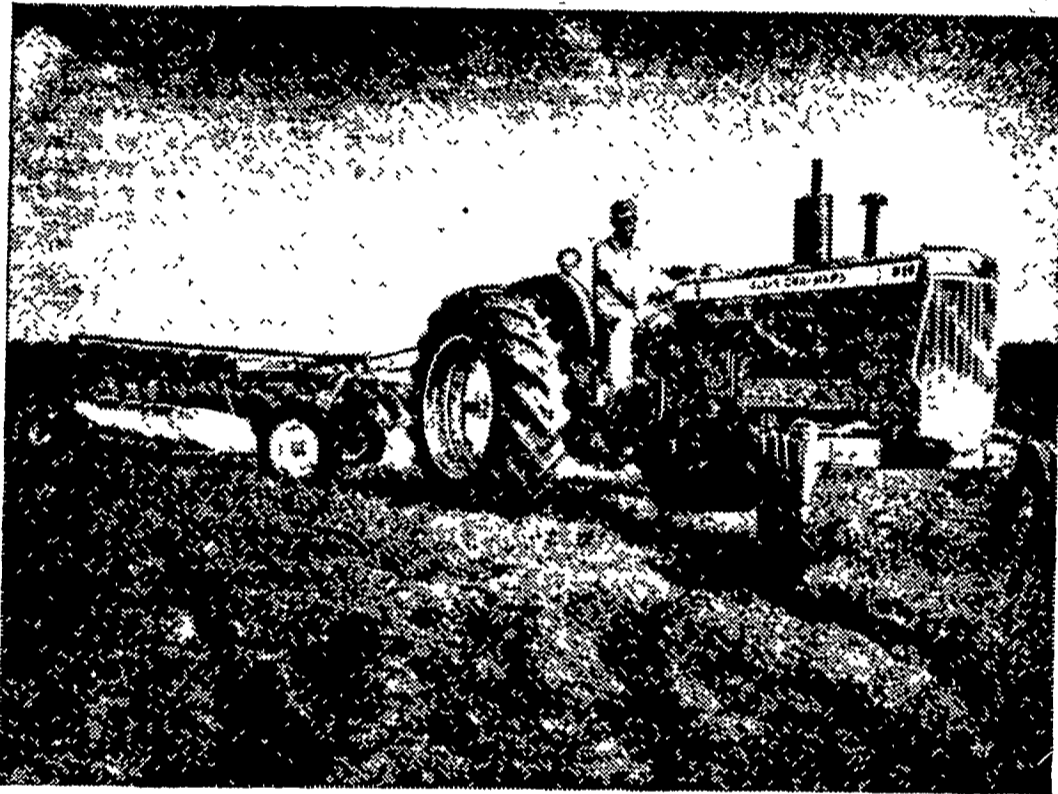
Started Pullets — Ready to Lay  
Available Now — All Vaccinations  
Excellent Health — Grown in Lancaster Co.

**FLORIN FARMS, INC.**

Mount Joy, Pa. RFD #1, 653-9891

Nothing is impossible to a man who does not have to do it himself.

*now we have it!*



**Big New D-19**

**Big horsepower** — Up to 70 PTO hp — manufacturer's estimate (corrected). POWER-CRATER gasoline and LP engines or new TURBO-CHARGED diesel.

**Big weight** — Up to 7700 lbs. (with liquid ballast but without wheel weights).

**Big size** — Long and stable for big implements, 12 feet 10 inches from end to end. Big tires (15.5-38, 16.9-34\*, or 18.4-34\*) to handle big jobs. \*Optional at extra cost

**Big in new comfort** ... and quiet.

POWER-CRATER is an Allis-Chalmers trademark.

Finance for profit. Ask us about Allis-Chalmers' time payment plans.

**ALLIS-CHALMERS**   
SALES AND SERVICE.

**Nissley Farm Service**  
Washington Boro, Pa.

**Grumelli Farm Service**  
Quarryville, Pa.

**L. H. Brubaker**  
Lancaster, Pa.

**L. H. Brubaker**  
Lititz, Pa. 709-2802

**Allen H. Matz Farm Equipment**  
New Holland, Pa.

**N. G. Myers & Son**  
Rheems, Pa.

**Lausch Bros. Equipment**  
Stevens, Pa.

**MAKE NO MISTAKE**

USE

**CONESTOGA BRAND FERTILIZERS**

FOR

**ALL CROP NEEDS**

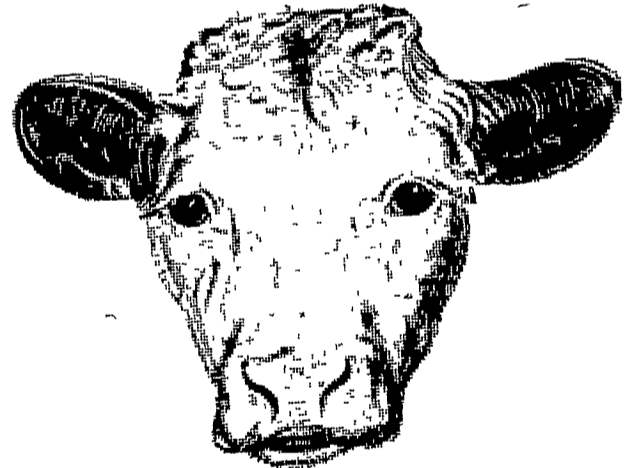
LEGUME SEEDINGS — TOP DRESSERS  
ALFALFA — DIELDRIN MIXTURES  
SPECIAL MIXTURES TO SOIL TEST  
BULK SPREAD — PICK UP — OR BAGS

**LANCASTER BONE FERTILIZER CO.**

Quarryville ST 6-2547

Oxford 932-8323

**Try this Profit Combination!**  
**Your steers...**



and **Red Rose**®

**Beef Cattle Supplement**

Red Rose Beef Cattle Supplement assures quick gains. It supplies vitamin A and D, and all proteins and minerals that are necessary to balance farm roughages of hay, pasture, grain and corn cobs; and contains urea as a protein extender. For your selection, it is available with or without Diethylstilbestrol.

If you have steers on your farm — Red Rose Beef Cattle Supplement should be on your next feed order.

**Chas. E. Sauder & Sons**  
R. D. 2, East Earl, Pa.

**David B. Hurst**  
Bowmansville, Pa.

**I. B. Graybill & Son**  
Refton, Pa.

**A. L. Herr & Bro.**  
Quarryville, Pa.

**Elverson Supply Co.**  
Elverson, Pa.

**Walter & Jackson**  
Christiana, Pa.

**Joseph M. Good & Son**  
Newport, Pa.