

August 10, 1963—7
Lancaster Farming,

Save Yourself

Learn to shop for groceries once a week and you can save your time and energy, gas, and wear and tear on your car, advises Harold Neigh, Penn State extension consumer economics specialist. He doesn't recommend driving from store to store to take advantage of specials unless the savings are exceptionally good.

ORDER NOW

MH - 30

FARMERS SUPPLY CO.
215 E. Fulton St.
Lancaster, Pa.

SERVING PA. TOBACCO
GROWERS EVERYWHERE
WITH MH 30

**EASTERN STATES
FARMERS EXCHANGE,
INC.**



**SUPPLIERS OF MH-30
ORGANIC PLANT FOOD CO.**

Grofftown Road Near Waterworks
Lanc. 392-4063

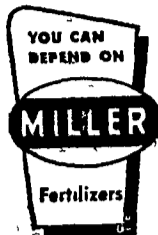
MH-30

AVAILABLE NOW AT

P. L. ROHRER & BRO.

SMOKETOWN

LANC. 397-3539



Lancaster County Distributors for
MH30

See your nearest dealer or call

MILLER CHEMICAL & FERTILIZER CORP.

P.O. Box 25, Ephrata

Ph. 733-6525

THE WATCHWORD THIS SEASON IN TOBACCO IS QUALITY

Here's how to get it from your MH-30 treated crop

SPRAY ONLY AT FULL FLOWER



NOT NOW...

There's a right time for spraying and a wrong time. The button stage (early flower bud) is the *wrong* time. All MH-30 labels and literature stress the correct time to apply, proper equipment and spray procedures. Be sure by following the label instructions.



HOLD IT...

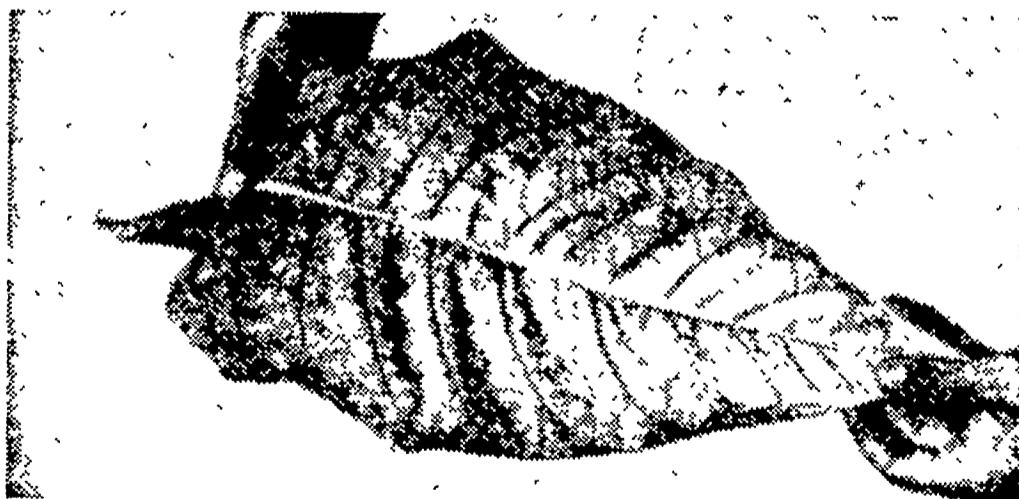
Don't jump the gun. This is the early to mid-bloom stage. Hold off till the right time, and you'll get sucker control like you've never seen before, *and* a quality leaf that will bring *top dollar*.



OK, NOW!...

Go to it. Most of the plants have flowers showing a brownish tinge and are starting to drop petals. Now is the time to spray—but go easy. 1 pint MH-30 for every 1,000 plants, or 1 gallon for every 8,000 plants. Spray and then top or else top first and spray within 24 hours.

WAIT—DON'T HARVEST TILL FULLY RIPE



MH-30 suckered plants take longer to ripen because there are no suckers to sap strength from the leaf. MH-30 may prematurely turn your top 4-6 leaves yellow. This is not an indication of ripeness, nor does it affect the quality. You can tell when your MH-30 treated tobacco is ripe by:

- a. Leaving some untreated plants as a guide.
- b. By taking one of your upper leaves and bending it between your thumb and forefinger. If the leaf cracks crisply, your tobacco is ripe.

Harvest mature tobacco for a high-quality leaf whether MH-30 is used or not.

By application of MH-30 at the proper time and rate, you can be sure your tobacco will "field-ripen" without deterioration or loss of leaf. Follow these and other proper practices you know about and you will grow fine quality tobacco.



MH-30 Use Not Restricted

The recent ruling of the U. S. Department of Agriculture does not oppose or discriminate against grower use of MH-30 for tobacco sucker control. The Department emphasized, the importance of all proper cultural practices.



United States Rubber
NAUGATUCK CHEMICAL DIVISION
NAUGATUCK, CONNECTICUT