

LANCASTER POULTRY CENTER

Prices Up 1.5 Cents

Live broiler prices were up one and a half cents a pound in the past week at the Lancaster Poultry Center.

At the August 8 sale a total of 105,175 broilers in 16 lots were sold at prices ranging from 15.9 to 16.2 for a sale average of 15.96.

A lot of 1,175 pullets brought 18 while 3 lots of Leghorn Fowl totaling 8,000 were 9.8 to 10.1.

The complete sale offered 153,010 head in 26 lots and sold 114,410 head in 20 lots.

Following is the complete sale report with lot number, seller, grower in parenthesis, amount and breed, age in weeks and days, buyer and price.

CODE: WV — Vantress Cross, WVX — White Vantress Cross, Wmt — White Mountain, MCW — Moore's Chesty White, LF — Leghorn Fowl, WMTp — White Mountain Pullets, WVP — White Vantress Pullets, IR — Indian River.

1. D E. Horn & Co (Lee Reinacker), 6000 WV, 9-2, Daniel K. Good, 15.9; 2. Miller & Bushong (A. L. Harmish), 10,000 WVX, 8-3, NO SALE, 15.7 BID; 3. Same, 15,000 WVX, 8-6, NO SALE, 15.9 BID; 4. Richard G. Buckwalter, 1175 WMT, 9, 0,

Martin Brendle, 16.2; 5. M&B (Elmer Beiler), 2200 MCW, 9-2, Starr Poultry, 16.1.

6. Same (Raymond H. Miller), 700 LF, W. C. Mellinger & Son, 9.8; 7. Glenn H. Herr, 700 WMTp, NO SALE, 18.0 BID; 8. Miller & Bushong (John Olesh, Jr), 1500 WVP, 14-2, NO SALE, 18.1 BID; 9. Same, 1500 WVP, 14-2, NO SALE, 18.0 BID; 10. D. E. Horn & Co. (Raymond Emig), 800 WVP, 9-2, Carl B. Risser, 16.0.

11. Same (Richard Myers), 6000 WV, 9-0, Starr Poultry, 15.9; 12. Same, 6000 WV, 9-0, Starr Poultry, 15.9; 13. Same, 4000 WV, 9-0, Starr Poultry, 15.9; 14. Same (Philip Foster), 9000 WV, 9-2; College Hill Poultry, 15.9; 15. M&B (Frank Bradley), 9900 IR, 8-2, NO SALE, 15.7 BID.

16 Same (Paul Stutzman), 11,500 WV, 8-2, Starr Poultry, 15.9; 17. Rufus Miller, 1100 LF, V. J. Koser Co. Inc., 9.8; 60 Males, V. J. Koser Co. Inc., 8-0; 18. Kenneth Noll, 1175 WVP, 14-2, W. C. Mellinger & Son, 18.0, 19. D. E. Horn & Co. (Donald Dowell), 5000 WV, 9-2, Carl B. Risser, 16.1; 20. Same, 8000 WV, 9-2, Daniel K. Good, 16.1

21. Same, 11,500 WV, 9-2, Starr Poultry, 16.0; 22. Same

(Enos Miller), 12,000 WV, 9-0, Starr Poultry, 16.0; 23. Same, 12,000 WV, 9-2, Starr Poultry, 15.9; 24. Raymond Zimmerman, 5000 WV, 8-6, Carl B. Risser, 16.1; 25. George Weaver, 6200 LF, 18 mo., V. J. Koser Co. Inc., 10.1; 26. Raymond Zimmerman, 5000 WV, 8-6, Starr Poultry, 15.9.

Delmarva Broiler Prices Advance 1/2 Cent

Delmarva reported live broiler prices advanced approximately 1/2 cent. Demand continued good for heavy auction offerings. Ready to cook demand improved ranging fair to good. New business developing satisfactorily though some resistance noted to increased prices.

Delivered prices 1/2 cent higher with those on low side of range prior to commitment.

Estimated slaughter Friday and Saturday 898,000 compared to 949,000 last week end.

Prices ranged from 15.3 to 16.5 for reported purchases of 1,150,700 head, including 603,200 head offered and sold at Thursday auction at Selbyville, Del.

Thirty-nine percent of the sales ranged from 15.5 to 15.9.

Chicago (Continued from Page 2)

Choice and Prime 1075-1350 lbs. 25.00-25.50, over 20 loads averaging mostly 1075-1300 lbs at 25.50, on Monday two loads Prime 1184-1250 lbs 25.75, few loads Prime 1350-1400 lbs 25.00-25.25, load Prime 1396 lbs 24.75, Choice 900-1250 lbs. 24.50-25.25, comparable grade 1250-1350 lbs. 24.00-24.75, several sessions.

Slaughter steers: Mixed

Weekly New York Egg Mkt.

From Monday, August 5th to Friday, August 9th

	Mon.	Tues.	Wed.	Thurs.	Fri.
WHITE					
Ex.					
Fcy. Hywts.	33	33	34 1/2	36 1/2	38 1/2
Fcy. Hywts.	32	32	32	33-33 1/2	35 1/2
Fcy. Med.	26 1/2	26 1/2	26 1/2	26 1/2	26 1/2
No. 1 Med.	26	26	26	26	26
Pullets	19	19	19	18 1/2-19	18 1/2-19
Peewees	15 1/2	15 1/2	15 1/2	15 1/2	15 1/2
BROWN					
Ex.					
Fcy. Hywts.	38	38	38	38	38
Fcy. Hywts.	36 1/2	36 1/2	36 1/2	36 1/2	36 1/2
Fcy. Med.	28 1/2	28 1/2	28 1/2	28 1/2	28 1/2
Pullets	19	19	19-20	18 1/2-19	18 1/2-19
Peewees	15 1/2	15 1/2	15 1/2	15 1/2	15 1/2
MIXED					
Fcy Hywts.	32	32	32	33-33 1/2	35 1/2
No. 1 Med.	26	26	26	26	26
Pullets	19	19	19	18 1/2-19	18 1/2-19
Standards	29	29	29	29	29-30
Checks	22	22	22	22	22

TREND: Market very closely cleared on all top grades, particularly finest whites. All other grades steady.

Copyrighted 1963 By Urner-Barry Co.

New Holland (Continued from Page 2)

Choice and Prime 1075-1350 lbs. 25.00-25.50, over 20 loads averaging mostly 1075-1300 lbs at 25.50, on Monday two loads Prime 1184-1250 lbs 25.75, few loads Prime 1350-1400 lbs 25.00-25.25, load Prime 1396 lbs 24.75, Choice 900-1250 lbs. 24.50-25.25, comparable grade 1250-1350 lbs. 24.00-24.75, several sessions.

The August 5 calf auction met a steady market as 110 head were sold. Choice and prime vealers brought 28-35, good and low choice 25-28, standard 22-25, and cull and common 16-22

(Continued on Page 15)

S-T-R-E-T-C-H your feed dollars!

The feed money you put into Wayne Concentrate goes farther because it lets you use more of your own grain to help cut your egg producing costs.



Now with exclusive Syncro-Zymic formulation, Wayne Poultry Mixer is geared up to add more feed power to your grain. More efficient egg producing power than ever before, while keeping your feed cost figures low—less feed per dozen eggs and less cash outlay for feed. Bring your grain in and let us figure with you on an egg mash for your flock. We mix according to formulas developed and tested by the Wayne Research Farm.



MILLERSVILLE SUPPLY CO.
Millersville

MOUNTVILLE FEED SERVICE
R. D. 2, Columbia

GRUBB SUPPLY CO.
Elizabethtown

HERSHEY BROS.
Reinholds

POWL'S FEED SERVICE
R. D. 1, Quarryville
R. D. 2, Peach Bottom

C. E. SAUDER & SONS
R. D. 1, East Earl

DUTCHMAN FEED MILLS, INC.
R. D. 1, Stevens

ROHRER'S MILL
R. D. 1, Ronks

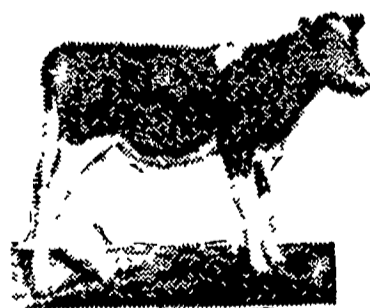
J. K. STAUFFER & SON
Lawn and Bellaire

H. M. STAUFFER & SONS, Inc.
Witmer - Ronks - Leola

DAIRYMEN

Get Your Calves Off To A Good Start With

WIRTHMORE TWIN-MIX CALF FEED



The popular calf grain especially designed for feeding from the first week to 4-5 months of age. Twin-Mix is coarse and extremely palatable. This encourages early consumption and speeds growth. Twin-Mix saves money by helping to develop the rumen early, allowing the calf to make maximum use of roughage.

J. K. Stauffer & Son
Lawn and Bellaire
665-3121 — 367-2321

Clem E. Hooper
Intercourse
768-3431

Paul M. Ressler & Son
Paradise 687-6292

PATZ Sales & Service
Barn Cleaners - Silo Unloaders - Cattle Feeders
Robert K. Rohrer
Quarryville, R. D. 1
Hensel KI 8-2559



What makes one pen of Chicks superior to another? Livability! General Vigor! Body Size! Efficiency! and Number of eggs laid! Try

"HONEGGER LAYERS"
For Top Breeding

J. HOWARD MOORE
R. D. #1
LITITZ, PENNA.
Phone: 626-5408

Windle's Hatchery
COCHRANVILLE, PA.
Phone: Atglen LY 3-5941