

BEST FOOD BUYS

Beef, Poultry and Fresh Vegetables Good Buys

August's abundant supplies are in deciding which of the give all food shoppers plenty many featured foods you'll of reasons for considering this month as something special. There's a multitude of shopping delights this week, including big supplies of red meats, poultry products, dairy foods and a wide variety of fruits and vegetables. Biggest decisions

Many people think that "specials", "features", or "leaders" advertised each week are foods of inferior quality which the store has on hand. The truth is that these "specials" are quality foods equal to that of

usual merchandise whether they be in the meat department or anywhere else in the store. They are priced near cost to attract you into the store in the hope that you'll make other purchases while there. Often these foods are in abundant supply, which means lower prices. If you can use the featured items, you can usually save money by buying them.

Fryer chicken and steaks of all kinds will be two meat items of outstanding value at many area stores. Fryer chicken prices are at their low period for the year. During warm weather steaks are popular as a quick-cooking meat so some retailers will have steaks as a weekend special. But, there's more to a steer than steak and retailers have to sell other beef cuts too. So look for special prices on chuck and standing rib roasts. Lamb and ham are also on sale throughout area stores.

Nearby truck gardens are now shipping plentiful supplies of fresh vegetables resulting in lower prices each week. There is also a wide range in quality for some items so shop carefully. Prices are moderate rather than low at fresh fruit counters. Peaches, summer apples and watermelons are fresh fruit leaders.

● Rain

(Continued from Page 13)

PEACHES such as Sun Havens and Red Havens are being picked and APPLES such as Rambo, Lodi and Transparents are running small but quality is good. There is still time, however, for the bulk of both crops to attain size. The GRAPE crop in Erie County is coming along well and sizing satisfactorily.

4-H Wildlife Club Holds Meeting

By: Eric Stoner, Reporter

The Lancaster County 4-H Wildlife Club met August 2, 3, and 4, at Camp Malcroft, the hunting cabin of Melvin Long, in Potter County.

The members went to see the Woodsmen's Carnival which was being held at Cherry Springs. A hike was taken around the area of the cabin to observe wildlife signs.


A meeting was held on Saturday evening to plan a trip to the Gladfelter Pulpwood Company on August 9. John

Erb, vice-president presided. Plans were made for a fishing party on August 15 at Graybill Gibble's pond, Manheim R. D. 3.

Overweight Problem

Overweight in school-age children is more likely to be due to lack of physical activity than to eating unusually large amounts of food, points out Louise Hamilton, Penn State extension nutrition specialist. Seldom does any game exercise all body muscles equally. Regular exercise at home can provide additional activity for the overweight child.

Normal rainfall is NOT enough!



MANAGE MOISTURE with a dependable GORMAN-RUPP PUMP.

The pay-off in sprinkler irrigation lies in dramatically increased crop yields and insurance against drought—especially during crucial growth periods. Make sure you manage your moisture with engineered system based on a Gorman-Rupp Irrigation Pump. More satisfied users than for any other make!

26 MODELS FOR EVERY NEED
Pump-and-engine packaged units. Automatic check valve with lever control. Operational safety controls standard. PTO pumps. Basic pumps.

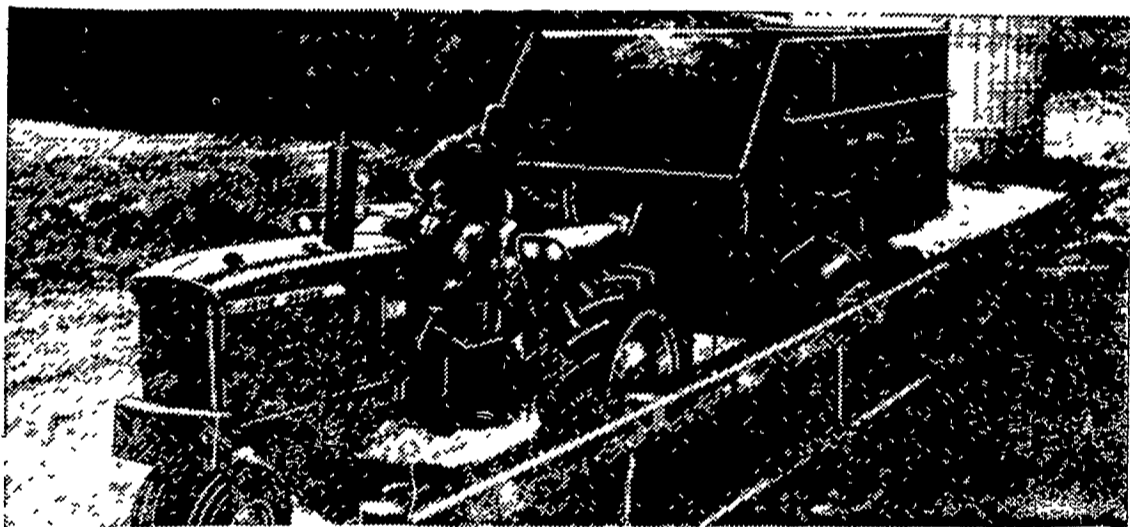
EECO, Inc.

Wholesale Distributors

4021 North Sixth Street, Harrisburg, Pennsylvania



The Gorman-Rupp Company
305 Bowman Street • Mansfield Ohio



Bigger capacity

John Deere 112 and 115 Chuck Wagons

You'll haul bigger loads . . . unload 'em faster with a John Deere 112 or 115 Chuck Wagon. With side extensions the 112 has 369 cubic feet of capacity . . . the 115 has 465 cubic feet.

These self-unloading wagons unload from the side into bunks . . . from both side and rear into elevators, blowers, trench and bunker silos. Low-cost attachments enable you to haul small grains and spread manure.

Stop in and get all the facts on John Deere 112 and 115 Chuck Wagons.

Landis Bros. Inc.
Lancaster 398-8906

A. B. C. Groff
New Holland 354-8001



Alan Beyer
Christiana LY 3-5687

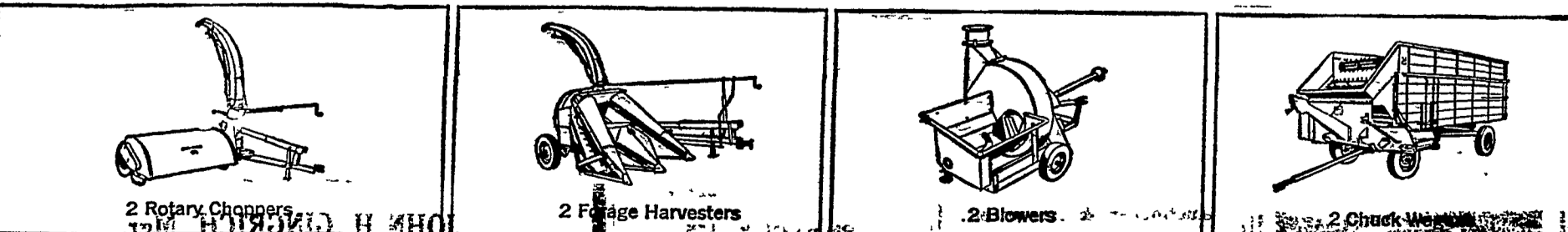
M. S. Yearsley & Sons
West Chester 696-2990

Wenger Implement Co.
Buck BU 4-4467

Shotzberger's
Elm 665-2141

Edwards & Cox
Oxford 982-2929

H. S. Newcomer & Son
Mt. Joy 653-3561



2 Rotary Choppers 2 Forage Harvesters 2 Blowers 2 Chuck Wagons

CHOOSE FROM THE LONG GREEN LINE OF CUSTOMERIZED JOHN DEERE FORAGE EQUIPMENT

CLEAN SWEEP PUBLIC SALE

— Of —

Farm Machinery & Household Goods

Along Scotland Road, midway between Quarryville cemetery and Chestnut Level, 3 miles southwest of Quarryville, East Drumore township, Lancaster County, Penna.

SATURDAY, AUG. 17, 1963

11:45 A.M., D.S.T.

Westinghouse Refrigerator (Good)

Frigidaire Electric Range 4 burners and oven, 1 Easy Washer with Spindryer, 1 Easy Washer with Wringer, Chrome Extension Breakfast Set with 5 Chairs, White Enamel Eagle Companion Cook Stove, (Good), 1 12x12½ Nylon and Rayon Rug, (Like New); 1 11x11½ Axminster Rug; 1 11x9 Fibre, and 1 Linoleum Rug; New Sofa; 2 Walnut Stands with Drawers; Walnut Dining Room Suite, Buffet, Large Extension Table, 6 Chairs and China Stand! Antique Organ Desk; 1 Set Green Plush and Mahogany Parlor Chairs; Roll Top Desk and Matching Swivel Arm Chair; 2 Arm Chairs, one Stuffed; 5 Walnut Chairs with Cane Seats; Odd Chairs; 1 Good Bedroom Suite, Dark Wood; 1 Cedar Bedroom Suite, like new; 1 Large Cedar Wardrobe; 1 Maple Dresser; Marble Top Dresser with Mirror; Marble Top Washstand; 1 Bookcase and Desk Combination, (Glass Door); 14-Drawer Highboy; Chest; 6 Cots and Padding; Quart and Pint Jars, Crocks, Etc.

FARM EQUIPMENT

Ford Tractor Plow, 3 Bottom, 14 In. 3 Pt.; I.H.C. 2 Bottom, 18 In. Trailer Plow; 2 Tandem Disc Harrows, 1 I.H.C.; 2 Spring Tooth Harrows; 1 Land Roller; John Deere Corn Binder with Carrier, P.T.O.

John Deere 4-Row Corn Planter

I.H.C. Ensilage Cutter, 16 inch Shredder Bars. Blower Pipe, (Good); 13-Disc Grain Drill; I.H.C. 7-F. Trailer Mower; I.H.C. Side Delivery Rake; Hay Loader; 1 Landel Stalk Shredder; 1 Sears Steel Wheel Wagon; 1 Ford Grader Blade, 3 Pt.; 1 Brooder House; 2 Large Box Trailers.

I.H.C. V-License Truck, 12 Ft. Steel Bed, Good Tires

2-Row Holland Plant Setter; Feed Cart; Wheelbarrow; Barn Scraper; Forks; Ropes; Feed Mixer; 2 Steel Water Troughs; Large Steel Water Tank; Sears Trailer Seeder; Motor Driven Tractor Seeder; Tools; Copper Kettle.

5 Tons Alfalfa Hay

1 Holstein Cow; 1 3-Unit DeLaval Milker Pump with 2 Units; 3 Stainless Steel Buckets; 1 5-Can Milk Cooler; Water Heater. Many other Articles.

Sold farm and I am discontinuing farming. Not responsible for accidents.

Terms by:

JACOB R. HERSHEY

Auctioneers:
J. Everett Kreider, BU 4-4517
Carl Diller, ST 6-2712

Lunch will be served.