

**SERVING PA. TOBACCO GROWERS EVERYWHERE WITH MH 30**  
**EASTERN STATES FARMERS EXCHANGE, INC.**



**Now Is The Time**

(Continued from Page 4)  
of fertilizer containing nitrogen, phosphorus, or potash, either in combination or separately, could be toxic to animals if consumed — and they will eat the stuff if given the chance. Empty bags or containers containing chemicals or fertilizers should be burned in order to prevent poisoning, and careful storage and labeling is most important.

**4-H Alumni**

There are now nearly 23,000,000 Americans who are 4-H Club alumni. The National 4-H Club Alumni Recognition program annually honors former members whose accomplishments show effective community leadership, public service and aid.

**MH-30**  
 AVAILABLE NOW AT  
**P. L. ROHRER & BRO.**  
 SMOKETOWN LANC. 397-3539

**YOU CAN DEPEND ON MILLER Fertilizers**  
 Lancaster County Distributors for  
**MH30**  
 See your nearest dealer or call  
**MILLER CHEMICAL & FERTILIZER CORP.**  
 P.O. Box 25, Ephrata Ph. 733-6525

**ORDER NOW**  
**MH - 30**  
**FARMERS SUPPLY CO.**  
 215 E. Fulton St.  
 Lancaster, Pa.

**THE WATCHWORD THIS SEASON IN TOBACCO IS QUALITY**

Here's how to get it from your MH-30 treated crop

**SPRAY ONLY AT FULL FLOWER**



**NOT NOW...**

There's a right time for spraying and a wrong time. The button stage (early flower bud) is the *wrong* time. All MH-30 labels and literature stress the correct time to apply, proper equipment and spray procedures. Be sure by following the label instructions.



**HOLD IT...**

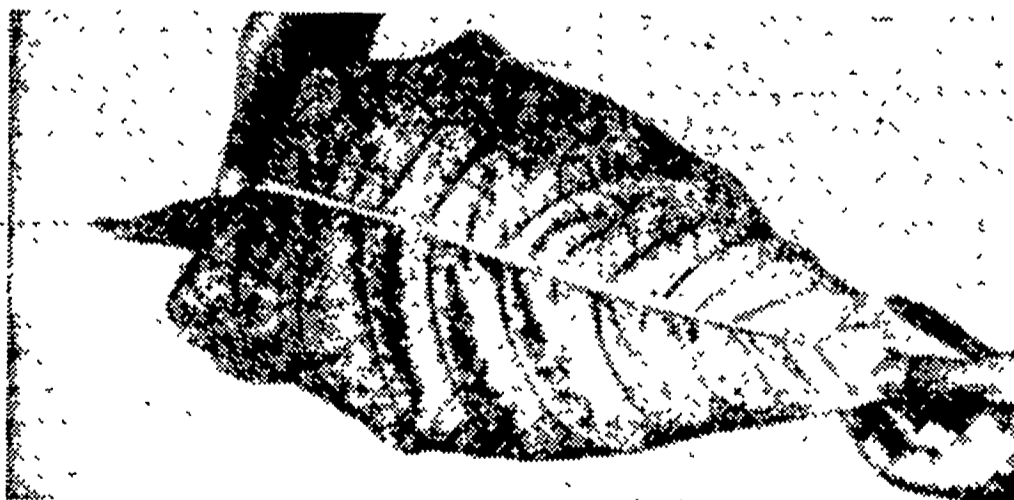
Don't jump the gun. This is the early to mid-bloom stage. Hold off till the right time, and you'll get sucker control like you've never seen before, *and* a quality leaf that will bring *top dollar*.



**OK, NOW!...**

Go to it. Most of the plants have flowers showing a brownish tinge and are starting to drop petals. Now is the time to spray—but go easy. 1 pint MH-30 for every 1,000 plants, or 1 gallon for every 8,000 plants. Spray and then top or else top first and spray within 24 hours.

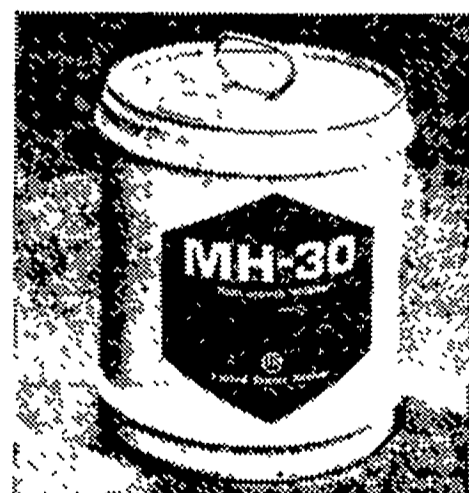
**WAIT—DON'T HARVEST TILL FULLY RIPE**



MH-30 suckered plants take longer to ripen because there are no suckers to sap strength from the leaf. MH-30 may prematurely turn your top 4-6 leaves yellow. This is not an indication of ripeness, nor does it affect the quality. You can tell when your MH-30 treated tobacco is ripe by:

- a. Leaving some untreated plants as a guide.
- b. By taking one of your upper leaves and bending it between your thumb and forefinger. If the leaf cracks crisply, your tobacco is ripe.

Harvest mature tobacco for a high-quality leaf whether MH-30 is used or not. By application of MH-30 at the proper time and rate, you can be sure your tobacco will "field-ripen" without deterioration or loss of leaf. Follow these and other proper practices you know about and you will grow fine quality tobacco.



**MH-30 Use Not Restricted**

The recent ruling of the U. S. Department of Agriculture does not oppose or discriminate against grower use of MH-30 for tobacco sucker control. The Department emphasized, the importance of all proper cultural practices.

**US RUBBER** United States Rubber  
 NAUGATUCK CHEMICAL DIVISION  
 NAUGATUCK, CONNECTICUT