

Market News Reports Market News Reports

At Lancaster Yards

Weekly Review
Friday, July 26
CATTLE: 2500. Compared with 3800 head last week. Supply includes 50 percent slaughter steers and 40 percent feeder steers. Trading fairly active. Compared with last week close, slaughter steers steady to 25 lower, decline largely on weights over 1250 lbs Cows 25 higher, advance mostly on Canner and Cutter grades. Bulls and Feeders steady.

Slaughter Steers: Choice 950-1250 lbs. 24.50-26.25, Choice 1250-1400 lbs. 24.25-25.75, Several loads and lots High and Prime 1000-1250 lbs. 26.50-27.00, few loads around 1116-1252 lbs 27.25, Good and low Choice 23.50-24.75. 24.75.

Heifers: few lots Good and low Choice 803-853 lbs. 23.50-24.00, part load Choice 768 lbs 24.40.

Cows. Cutter and Utility 15.50-17.00, few 17.25, Canner and low Cutter 14.00-15.50, Shelly canner down to 12.00.

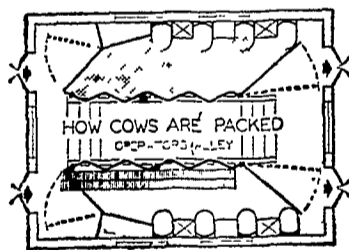
Utility and Commercial bulls 19.00-22.00, Good grade 22.00-23.50, few Individual 24.00.

Feeder Steers load Choice around 900 lbs 25.75, Part Load Choice 630 lbs. 25.85, Good and Choice 750-950 lbs. 24.75-25.25, Medium and Good 690-950 lbs. 23.00-24.50 Common and Medium 21.00-22.00.

CALVES: 590. Compared with 529 head last week Trading moderately active. Vealers steady Good and Choice 25.00-30.00, Choice and Prime 30.00-32.00, Few to 34.09. Standard 22.00-25.00, Utility 19.00-22.00, Cull and Utility 14.00-19.00

HOGS 880 Compared with 1118 head last week Trading moderately active Barrows and gilts mostly 25 higher, instances 50 higher Sows 50

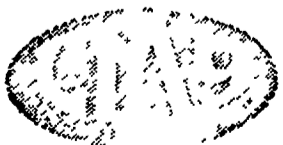
CLAY Herringbone Milking Parlor



Fastest known system of milking

You can milk 50 or more cows an hour in the CLAY Herringbone Milking Parlor . . . and feed at the same time!

In addition, you get 8 important, exclusive features with a CLAY Herringbone Parlor. We'd like to tell you more about this modern, labor-saving milking system and demonstrate these special CLAY features. Stop in next time you're in town.



Modern Equipment for Easier Farming

Wilbur Graybill

Lititz RD 2
Ph. 626-5221

Vintage Sale

Tuesday, July 23

higher.
Barrows and gilts U.S 1-2 190-230 lbs. 20.00-21.00, No 1 190-225 lbs. 21.00-21.50, U.S 1-3 190-240 lbs. 20.00-21.00, No. 1 190-225 lbs. 21.00-21.50, U.S. 1-3 190-240 lbs. 19.50-20.00, 2-3 230-260 lbs. 18.50-19.50.

Sows U.S. 1-3 300-450 lbs. 13.50-14.50, few No. 1's 15.00.

SHEEP: 480. Compared with 435 head last week. Spring lambs steady. Choice and Prime 60-90 lb. spring lambs 20.00-22.00, few 23.00, Good grade 16.00-20.00.

Chicago Cattle

WEEKLY REVIEW

CATTLE — Salable receipts for the four day 27,000 compared with 23,800 last week and 24,000 a year ago.

Slaughter steers uneven, weights under 1250 lbs. steady to 25 lower, with those under 1100 lbs tully steady, over 1250 lbs 25-50 lower with instances 75 off on weights over 1400 lbs Heifers steady, cows 50-100 higher with canner and cutter mostly 100 up. Bulls steady to 50 higher. Small supply feeders steady to 50 higher

Slaughter steers. Mostly Prime 1200-1396 lbs 26.00-26.50, late 26.00-26.25. Mixed high Choice and Prime 1100-1400 lbs 25.50-26.00. Bulk Choice 900-1250 lbs 24.75-25.50, comparable grade 1250-1400 lbs 24.50-25.00, Choice 1400-1500 lbs 24.00-24.50, load high Choice and Prime 1520 lbs 24.50, few loads Choice 1500-1558 lbs 23.50, mostly Good 900-1250 lbs

(Continued on Page 14)

CATTLE: 669. Compared with last Tuesday's market, slaughter steers 25-75 higher. Cows uneven; Utility and Commercial steady to 25 lower, Canner and Cutter steady to 25 higher. Bulls steady.

Slaughter steers: High Choice and Prime 1000-1250 lbs. 26.50-27.35, few to 27.60, Choice 950-1300 lbs. 25.00-26.75, Choice 1250-1450 lbs. 24.25-25.50, Good to low Choice 23.50-25.00, Standard 22.00-23.50.

Heifers: Some Good and Choice 755-930 lbs. 22.35-25.50.
Cows: Cutter and Utility 15.25-17.50, Canner and low cutter 13.25-15.25, Shelly canner down to 12.00.

Utility and Commercial bulls 19.50-22.00, Good grade 22.00-23.75, few to 24.35.

CALVES: 442 Trading moderately active Vealers 1.00-2.00 higher. Full advance on Good grade and above.

Choice vealers 30.00-33.00, High Choice and Prime 33.00-34.50, few to 36.50, Good 28.00-31.00, Standard 24.00-28.00, Utility 20.00-24.00.

HOGS: 280. Barrows and gilts 25-50 higher. U. S. 1-2 190-229 lbs 20.25-20.60 U. S. 1-3 190-250 lbs 19.50-20.25.

Sows: U. S 1-3 285-485 lbs. 13.00-14.85, few 2-3 560-585 lbs 12.00-12.50.

Medium and Good Feeder Pigs 6.40-13.50 per head.

SHEEP: 22 Spring slaughter lambs steady. Some Good and Choice 60-95 lbs. Spring lambs 17.00-21.00.

Pennsylvania was the first state to pass meat inspection laws and first to establish livestock sanitary services.

New Holland Auction

Thursday, July 25

CATTLE: 1243. Compared with last Thursday's market, slaughter steers steady to 50 lower, decline largely on weights over 1200 lbs Cows active, 25 to mostly 50 higher, Bulls mostly steady; Instances 50 lower on Cutter and low Utility grades.

Slaughter steers: High Choice and Prime 950-1250 lbs. 26.50-27.00, Individual 27.10, Choice 950-1250 lbs. 25.00-26.50, Choice 1200-1400 lbs. 24.50-26.00, Good to low Choice 23.00-25.00, Standard 21.00-23.00.

Heifers: Good and Choice 705-955 lbs. 22.00-25.35, Standard and low Good 19.50-22.00.

Cows: Cutter and Utility 16.00-17.50, Canner and low Cutter 14.00-16.00, Shelly canner down to 12.00.

Bulls: Utility and Commercial 19.50-22.00, Good grade 22.00-23.60, Cutter and low Utility 17.00-19.50.

Feeder Steers: Good and Choice 620-755 lbs. 22.00-26.50, Medium and Good 20.50-23.00, Good 345-620 lbs. 24.35-26.50.

CALVES 401 Vealers uneven, about steady. Choice and Prime 30.00-34.00, Good 27.00-30.00, Standard 24.00-27.00, Utility 20.00-24.00.

SHEEP: 23. Some Good and Low Choice 55-95 lbs. spring slaughter lambs 17.00-19.50.

The dairy cattle market was slow and lower at the July 24 auction at New Holland. There were 222 cows, three bulls and 60 heifers on offer.

Fresh Holstein cows ranged \$275-425; Guernseys \$150-225, and other breeds \$150-300. Stock bulls brought \$140-210, and stock heifers sold for \$65-170.

At the July 22 horse auction the market was slow and barely steady. Receipts totaled 301 head.

Riding horses brought \$100 to \$225, while driving horses were \$110-315. Pony mares were \$60-110, and geldings brought \$40-125. Killer horses brought 7-7½ cents.

The 426 market hogs at the July 22 auction sold 25 higher. Retail hogs to local butchers brought 20-21.50; grades 1 to 3 sold to packers for 19.75 to 20.60, and heavyweights were 18.50 to 19.50. Sows sold for 12 to 14. The 26 shoats brought \$9 to \$12 per head.

The July 22 calf auction sold the 110 head at steady prices. Choice and prime vealers were 28-33, good and low choice 25-28, standard 22-25, and cull and common 18-22.

"Hitch Your Silo Filler To A Star"

Weaver Star Silo Co.

R#5, Lebanon, Pa.

CR 2-7424

Poured Concrete Silos - Grain & Industrial Bins

— NEW —

JOHN DEERE

110 Lawn and Garden Tractor

Exclusive 3-way ground-speed control
3 speeds forward, one reverse in 7 speed ranges . . . on the go . . . speed change controlled by clutch pedal, speed-control lever and throttle.

7 h.p. 4-cycle Engine

Ignition key (neutral gear) safety starter

Fiber glass hood and fenders

Adjustable rear-wheel tread . . 27 to 33 inches

EQUIPMENT

38 Inch Rotary Mower

36 Inch Snow Thrower

42 Inch Front Blade

Other Attachments and Accessories Available

Financed John Deere Credit Plan

15% Down, 30 Months To Pay

Six Month Warranty

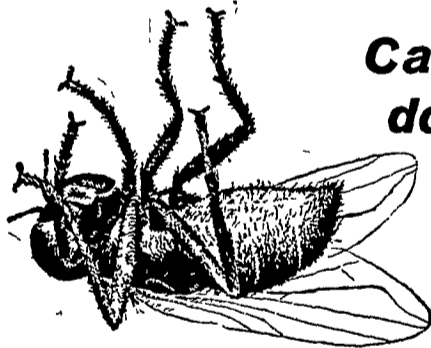
See Today . . . Ask For A Demonstration

Sold Exclusively In The Lancaster Area By

Landis Bros., Inc.

1305 Manheim Pike — Ph. 393-3906
Lancaster, Pennsylvania

PURINA HEALTH AIDS
... a shield against disease losses



Cattlemen — don't let flies slow gains, cost you money

Cattle feeders know that fly-time is rough on cattle. Flies bother cattle, slow gains; may contaminate feed, and spread disease.

A small investment in fly control is sure to pay big dividends. Cattle fed in Purina Feeding Demonstrations are protected by Purina Research approved killers that kill flies like magic. Research tests show fly control pays for itself many times over in added pounds of gain.

Now's the time to see your Purina Dealer for effective, easy-to-use, economical Purina Fly Killers. They're built to control fly-time problems in your feedlots or on range.

- | | |
|---|--|
| James High
Gordonville | John B. Kurtz
Cedar Lane |
| Wenger's Feed Mill, Inc.
Rheems | S. H. Hiestand & Co.
Salunga |
| Ira B. Landis
Valley Road, Lancaster | J. H. Reitz & Son, Inc.
Lititz |
| John B. Kurtz
Ephrata | John J. Hess, II
Intercourse - New Providence |
| Whiteside & Weicksel
Kirkwood | Warren Sickman
Pequea |
| John J. Hess
Kinzers - Vintage | |