

SERVING PA. TOBACCO GROWERS EVERYWHERE WITH MH-30
EASTERN STATES FARMERS EXCHANGE, INC.



● Lancaster Yards

(Continued from Page 2)
 ers steady. Good and Choice 1328 head last week. Barrows 1-3 190-240 lbs. 19.25-19.75,
 25.00-30.00, Choice and Prime and gilts steady to 25 higher. 2-3 230-260 lbs. 18.50-19.25.
 30.00-32.00, Standard 22.00- Sows 50 higher. Sows: U. S. 1-3 300-450 lbs.
 25.00, Utility 19.00-22.00, Cull Barrows and gilts U. S. 1-2 12.00-14.00, 2-3 450-600 lbs.
 and Utility 14.00-19.00. 190-230 lbs. 19.75-20.50, No. 1 10.50-12.00.
 HOGS: 950. Compared with 190-225 lbs. 20.50-21.00, U. S. SHFEP: 450. Compared
 with 398 head last week. Trading slow. Spring slaughter lambs steady. Choice and
 Prime 60 90 lb Spring slaughter lambs 20.00-22 00, few to 23.00. Good grade 16 00-20 00.

MH-30
 AVAILABLE NOW AT
P. L. ROHRER & BRO.
 SMOKETOWN LANC. 397-3539

YOU CAN DEPEND ON MILLER Fertilizers
 Lancaster County Distributors for
MH30
 See your nearest dealer or call
MILLER CHEMICAL & FERTILIZER CORP.
 P.O. Box 25, Ephrata Ph. 733-6525

ORDER NOW
MH-30
FARMERS SUPPLY CO.
 215 E. Fulton St.
 Lancaster, Pa.

THE WATCHWORD THIS SEASON IN TOBACCO IS QUALITY

Here's how to get it from your MH-30 treated crop

SPRAY ONLY AT FULL FLOWER



NOT NOW...

There's a right time for spraying and a wrong time. The button stage (early flower bud) is the *wrong* time. All MH-30 labels and literature stress the correct time to apply, proper equipment and spray procedures. Be sure by following the label instructions.



HOLD IT...

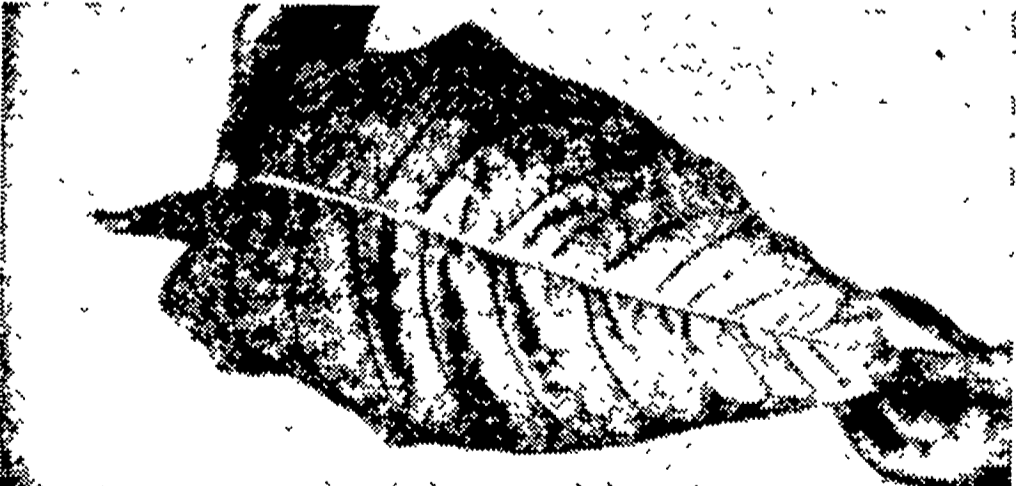
Don't jump the gun. This is the early to mid-bloom stage. Hold off till the right time, and you'll get sucker control like you've never seen before, and a quality leaf that will bring *top dollar*.



OK, NOW!...

Go to it. Most of the plants have flowers showing a brownish tinge and are starting to drop petals. Now is the time to spray—but go easy. 1 pint MH-30 for every 1,000 plants, or 1 gallon for every 8,000 plants. Spray and then top or else top first and spray within 24 hours.

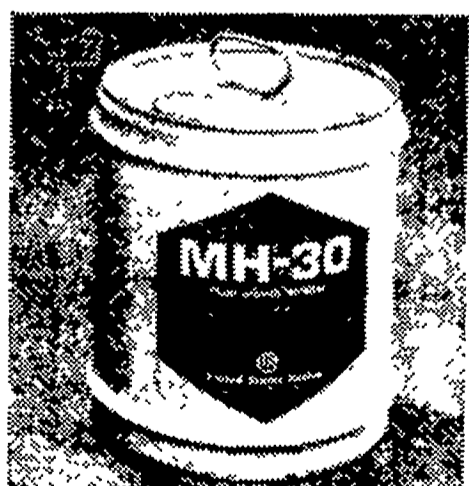
WAIT—DON'T HARVEST TILL FULLY RIPE



MH-30 suckered plants take longer to ripen because there are no suckers to sap strength from the leaf. MH-30 may prematurely turn your top 4-6 leaves yellow. This is not an indication of ripeness, nor does it affect the quality. You can tell when your MH-30 treated tobacco is ripe by:

- a. Leaving some untreated plants as a guide.
- b. By taking one of your upper leaves and bending it between your thumb and forefinger. If the leaf cracks crisply, your tobacco is ripe.

Harvest mature tobacco for a high-quality leaf whether MH-30 is used or not. By application of MH-30 at the proper time and rate, you can be sure your tobacco will "field-ripen" without deterioration or loss of leaf. Follow these and other proper practices you know about and you will grow fine quality tobacco.



MH-30 Use Not Restricted

The recent ruling of the U. S. Department of Agriculture does not oppose or discriminate against grower use of MH-30 for tobacco sucker control. The Department emphasized, the importance of all proper cultural practices.

