

● Safety Week

(Continued from Page 1)
Its theme is "Inspection plus Correction equals Protection."

The 20th annual farm safety program is sponsored by the Department of Agriculture and the National Safety Council.

Secretary of Agriculture, Orville Freeman noted that, "Every hour an accident claims the life of a farm resident. Someone living on a farm suffers a disabling injury every 40 seconds"

He called on farmers to practice safety every day of the year, not merely during the week. "Being careful is no more than common sense," he said, "But it requires constant attention and mental alertness. When a man is fatigued or in a hurry to finish a job or trip, he becomes accident prone."

The National Safety Council has stressed a different phase of safety for every day in the week. Sunday has been designated as the day to stress "Reverence of life" Take time to care — Be open minded to safety suggestions. Realize that haste makes waste. Plan to avoid an overcrowded schedule.

Monday's theme is "Safety Begins at Home". Keep your farm and farm home in order. Eliminate hazards as you find them Be a good housekeeper

in your home and on your farm.

Agricultural chemicals are the Tuesday theme. Chemicals are becoming more widely used in agriculture and about the farm home. Always read the label, use as directed, store in original containers and in locked cabinets. Dispose of empty containers safely.

"Prevent Falls", says Wednesday's slogan. Plan ahead. Good planning reduces the temptation to hurry, means better production and fewer accidents. Repair or discard broken and unsafe ladders. Make sure the stairways are adequately lighted and properly handrailed.

Thursday's theme calls attention to Rural Highway Safety. Be courteous on the highway — a courteous driver believes in living and let live. Know and obey all traffic laws and follow safe driving practices. Remove trees, weeds and shrubs at farm entrances and intersections to improve visibility. Obey the "Signs of Life".

Farm Machinery safety will be emphasized on Friday. Don't depend on luck. Make sure your equipment is in safe operating condition. Make certain all guards and safety devices are in place. Always stop the machine before unclogging, oiling or adjusting. Equipment should be well marked with flags and properly lighted.

Recreation is not forgotten. Saturday's theme is recreation safety. Take safety seriously — everywhere — all the time. Around bodies of water (large or small) be especially careful. Learn to handle guns properly. Include safety in farm family vacation plans.

● New Holland

(Continued from Page 2)
other kinds were \$10 to \$20 per head lower. Riding horses brought \$110-275, while driving horses were \$110-250. Pony mares sold for \$60-125, and geldings were \$30-125. Killer horses brought 6½ to 7 cents a pound.

The July 15 hog market was 50 higher as 496 butcher hogs and 65 shoats were sold.

Retail hogs to local butchers brought 19.75 to 21.25. Grades 1 to 3 to the packers were 19.50-20.35, while heavyweight hogs brought 18.50 to 19.50. Sows sold for 13-15.25, and shoats were \$8.50 to \$12.

The 120 calves at the July 15 auction brought prices of 1.00 to 2.00 higher as choice and prime vealers sold for 30-33 50; good and low choice were 26-30; standard 22-26, and common 18-22.

Power lawn mowers are certainly not playthings, warn Penn State extension safety specialists. They urge homeowners to keep a safety eye open whenever they mow the lawn. It's good health insurance to be careful.

Livestock Auction Market

EVERY TUESDAY

Starting Promptly at 1:30 p.m.

Starting with bulls, steers, heifers, cows, hogs and calves.

**We get top \$\$ for your Livestock
Give us a call — HI 2-4181**

Vintage Sales Stables, Inc.

VINTAGE, PA.

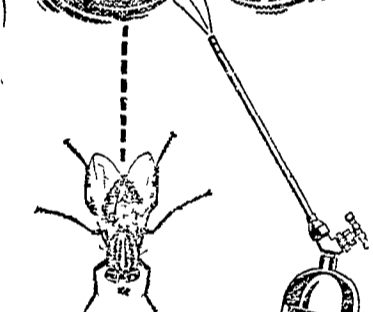
Frank Dussinger, Manager

Holland Stone

For interior or exterior use.

New Holland Concrete Products, Inc.

New Holland, Pa.
354-2114



A SUPER-POWERED AEROSOL ESPECIALLY DESIGNED FOR THE DAIRY INDUSTRY

LETHALAIR

The new insecticide that's amazingly effective, economical, safe, easy to use, fast and clean. Kills flies, even the resistant ones, and other insects that plague the dairy farm. Ask to see it demonstrated.

P. L. ROHRER & BRO., INC.

SMOKETOWN
Ph. Lanc. 397-3539

● CRUSHED STONE
All Sizes
● AGRICULTURAL LIMESTONE
BELMONT LIMESTONE CO.

R. D. 1, Paradise Gap HI 2-4133

ATTENTION

Farmers and Poultrymen

We are the largest suppliers of Wood Shavings in the East for Poultry Litter and Cattle Bedding packaged in bales, burlap and paper bags.

We deliver anywhere.

We are now receiving a new crop of very clean peanut hull. Save money by picking up at our warehouse.

For prompt service call

O. & D. SAWDUST CO., Inc.

659 E. Main St., Lititz, Pa.

(formerly of Manheim)

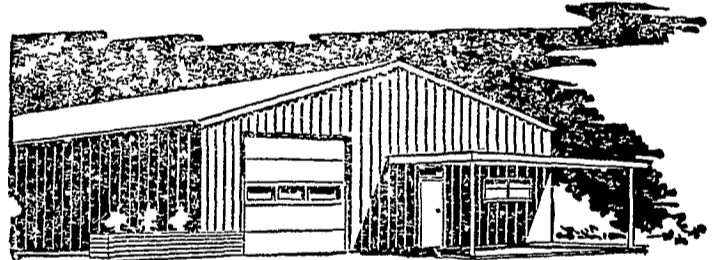
Phone 626-2068

Distributor For

Shredded Pine bark for Mulching
Evergreens, roses, etc.

LOOK to SHARON

FOR THE ANSWER TO YOUR INDUSTRIAL . . . COMMERCIAL BUILDING NEEDS



*Sturdy, Clear Span Framing

*Attractive . . . Colorful

*Exclusive Trim Feature

*Simple To Erect

*Reasonable Package Prices

CALL US . . . WE WILL GLADLY DISCUSS YOUR NEEDS . . . NO OBLIGATION

CALEB M. WENGER

R. D. 1 Drumore Center KI 8-2116 QUARRYVILLE, PA.

Landis Bros. Inc.

Lancaster 393-3906

A. B. C. Groff

New Holland 354-8001



Alan Beyer

Christiana LY 3-5687

M. S. Yearsley & Sons

West Chester 696-2900

Wenger Implement Co.

Buck BU 4-4467

Shotzberger's

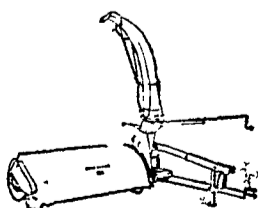
Elm 665-2141

Edwards & Cox

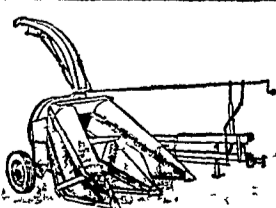
Oxford 932-2929

H. S. Newcomer & Son

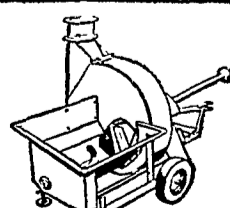
Mt. Joy 653-3361



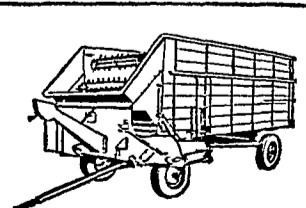
2 Rotary Choppers



2 Forage Harvesters



2 Blowers



2 Chuck Wagons

CHOOSE FROM THE LONG GREEN LINE OF CUSTOMERIZED JOHN DEERE FORAGE EQUIPMENT